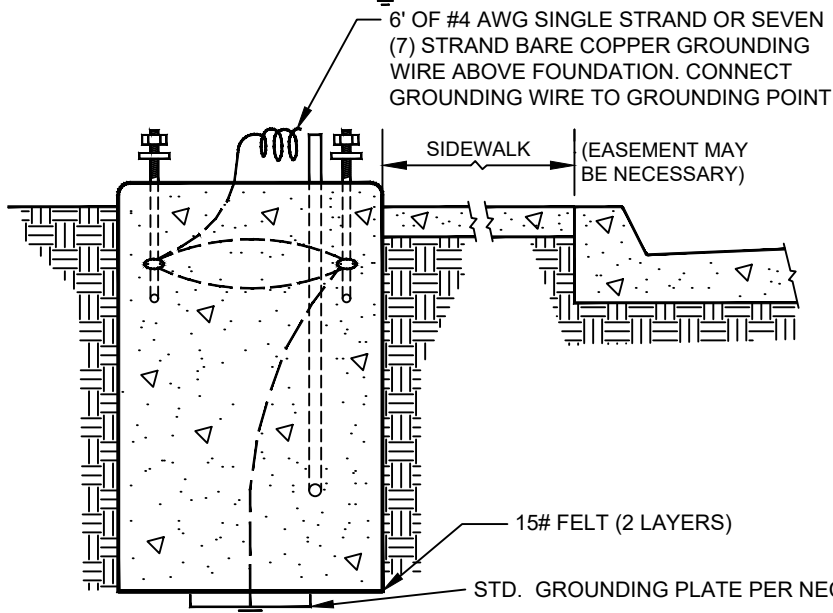
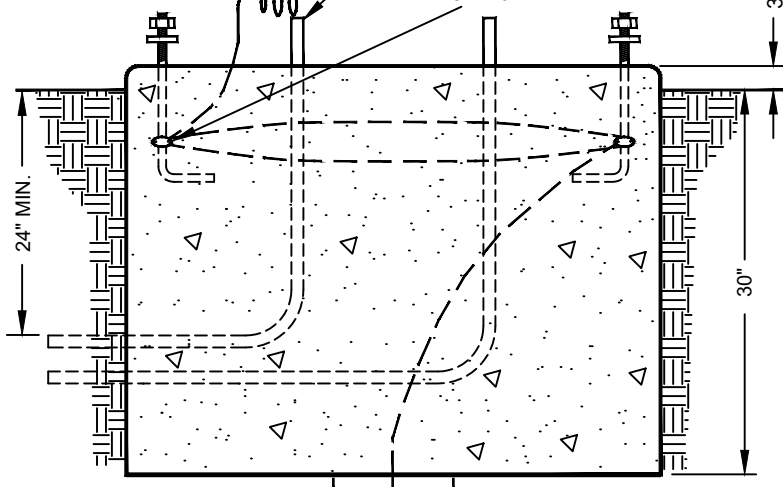


2" PVC COND. TO BE ADDED IN EVERY FDN. FOR FUTURE USE. POINT TOWARDS INTERSECTION

BRONZE GROUNDING CONNECTOR UL LISTED FOR UNDERGROUND USE (ONE PER BOLT) SEE NOTE 6

3" MIN. TYPE "J"
18" MIN. TYPE "K"



NOTES

1. FOR CONDUIT SIZE, LOCATION, AND QUANTITY SEE PLANS REFER TO CONDUIT LAYOUT ON STANDARD DRAWING 725.1 FOR DETAILS.
2. 3/4" X 18" X 3" HOT-DIP GALVANIZED ANCHOR BOLTS. LOCATE WITH TEMPLATE.
3. ANCHOR BOLT PROJECTION ABOVE FOUNDATION SHALL BE 3-1/2" MIN., 4-1/2" MAX.
4. CONDUIT PROJECTION ABOVE FOUNDATION SHALL BE 1" MIN., 4" MAX.
5. LOCATION OF FOUNDATION MUST BE APPROVED BY ENGINEER IN FIELD.
6. CONTINUOUS BARE COPPER GROUNDING WIRE SHALL BE CONNECTED TO EACH ANCHOR BOLT WITH BRONZE GROUNDING CONNECTOR BEFORE CONTINUING DOWN TO THE GROUNDING PLATE.
7. WHERE FOUNDATION IS INSTALLED IN SIDEWALK, A CLEAR WIDTH OF 48" SHALL BE MAINTAINED ON SIDEWALK.

PROFESSIONAL ELECTRICAL ENGINEER STAMP ON FILE

AGENCY APPROVED	B	C	H	L	M	N	R
-----------------	---	---	---	---	---	---	---

SPECIFICATION REFERENCE	
501	PORTLAND CEMENT CONCRETE
623	TRAFFIC SIGNALS & STREETLIGHTING

UNIFORM STANDARD DRAWINGS CLARK COUNTY AREA	
TYPE "J" & "K" FOUNDATIONS	
DATE 12-10-20	DWG. NO. 725