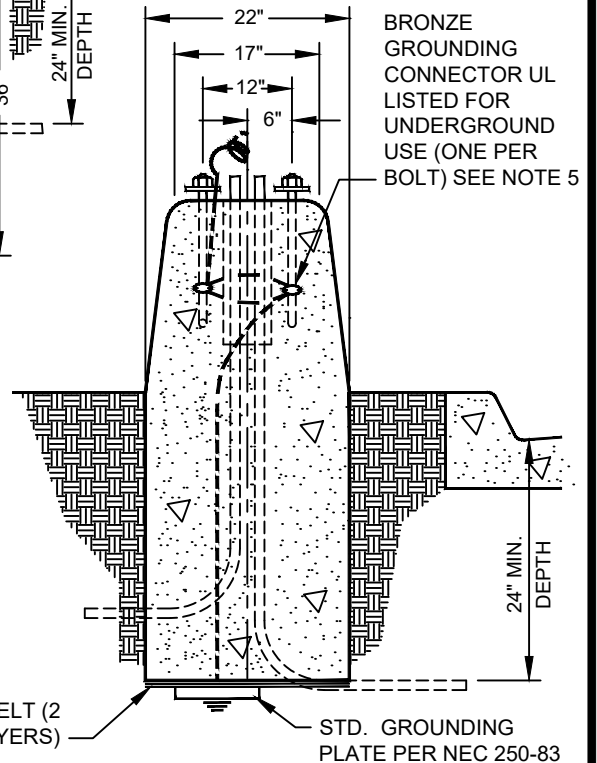
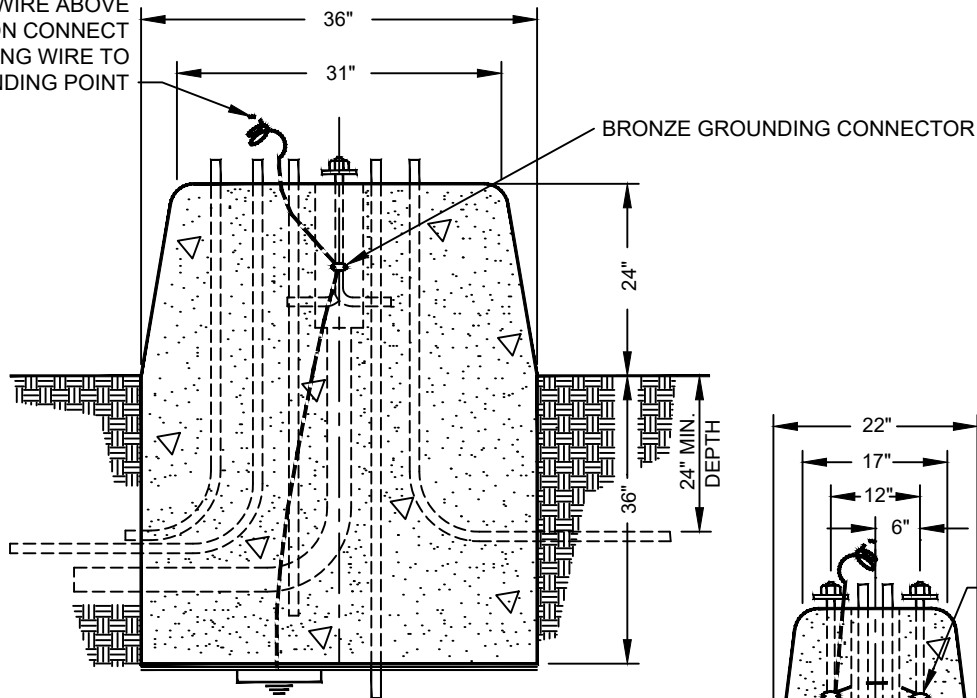


6' OF #4 AWG SINGLE STRAND OR SEVEN (7) STRAND BARE COPPER GROUNDING WIRE ABOVE FOUNDATION CONNECT GROUNDING WIRE TO GROUNDING POINT



NOTES

1. FOR CONDUIT SIZE, LOCATION AND QUANTITY, SEE PLANS.
2. ANCHOR BOLTS 3/4" X 18" X 3" SHALL BE HOT-DIP GALVANIZED COMMERCIAL GRADE STEEL WITH NUT AND WASHER.
3. ANCHOR BOLT PROJECTION ABOVE FOUNDATION SHALL BE 3-1/2" MIN., 4-1/2" MAX.
4. CONDUIT PROJECTION ABOVE FOUNDATION SHALL BE 2" MIN., 4" MAX.
5. CONTINUOUS BARE COPPER GROUNDING WIRE SHALL BE LOOPED AROUND ANCHOR BOLTS ONE TIME AND CONNECTED TO EACH ANCHOR BOLT BEFORE CONTINUING DOWN TO THE GROUNDING PLATE.
6. WHERE FOUNDATION IS INSTALLED IN SIDEWALK, A CLEAR WIDTH OF 48" SHALL BE MAINTAINED ON SIDEWALK.

15# FELT (2 LAYERS)

STD. GROUNDING PLATE PER NEC 250-83

PROFESSIONAL ELECTRICAL ENGINEER STAMP ON FILE

AGENCY APPROVED B C H L M N R

SPECIFICATION REFERENCE	
501	PORTLAND CEMENT CONCRETE
623	TRAFFIC SIGNALS & STREETLIGHTING

UNIFORM STANDARD DRAWINGS
CLARK COUNTY AREA

TYPE "I" FOUNDATION

DATE 12-10-20 DWG. NO. 724