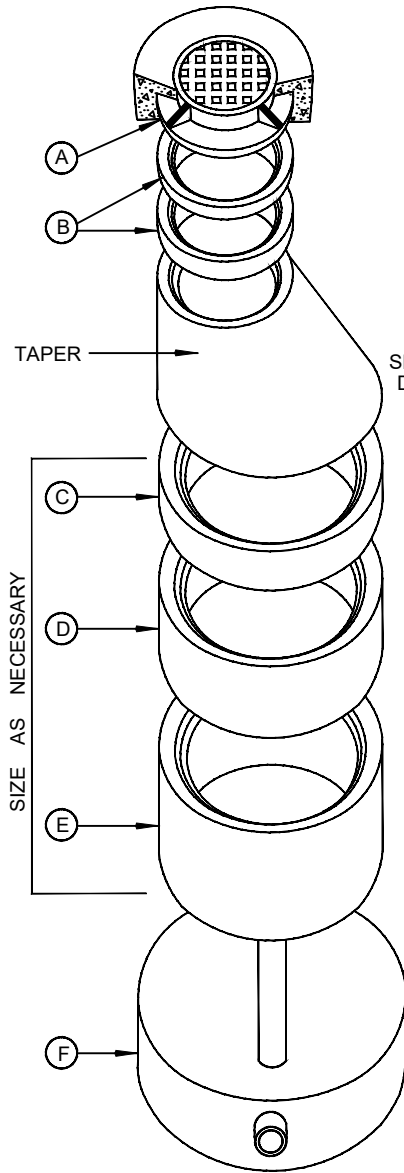
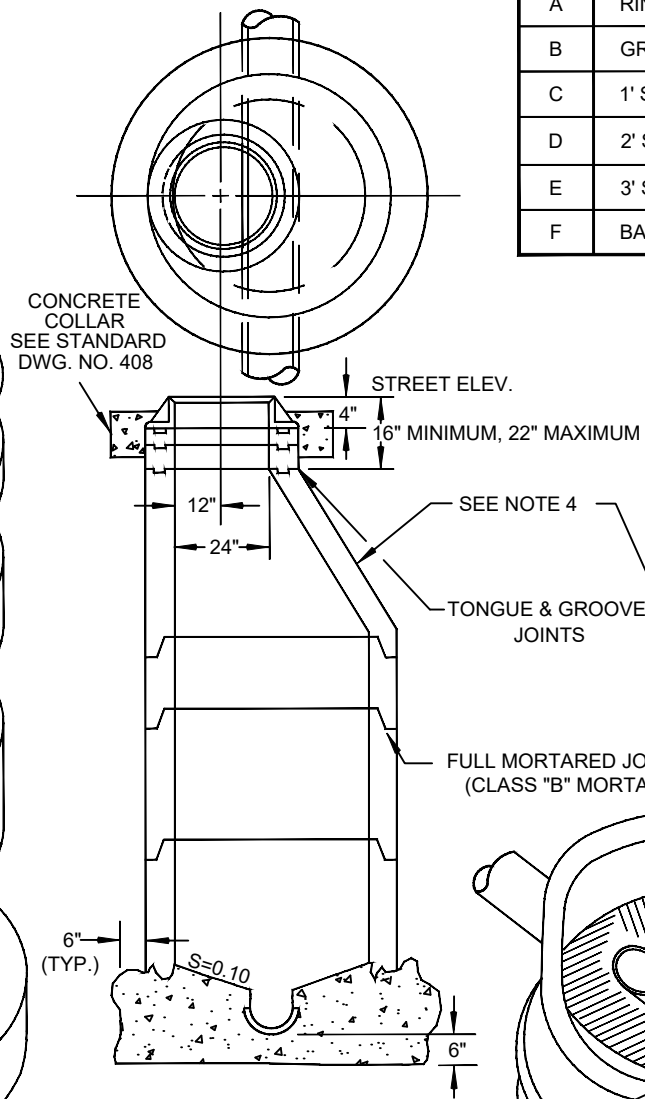


SYM.	ITEM
A	RING & COVER
B	GRADE ADJUSTING RING
C	1' SECTION REIN. CONC. PIPE
D	2' SECTION REIN. CONC. PIPE
E	3' SECTION REIN. CONC. PIPE
F	BASE



EXPLODED VIEW



ISOMETRIC VIEW

TAPER		HEIGHT
DIA.	H	
48"	36"	
60"	58"	
24" TO 48"	36"	
48" TO 60"	24"	

NOTES

1. IN UNIMPROVED NON-TRAFFIC AREAS, TOP OF MANHOLE SHALL BE 6" TO 9" ABOVE GRADE.
2. PIPES SHALL NOT PROTRUDE MORE THAN 3" INSIDE OF MANHOLE SECTION. CONSTRUCT WATER TIGHT CONNECTION TO MANHOLE.
3. PIPE SECTION LENGTHS ARRANGED TO FIT DEPTH.
4. AN OPTIONAL TWO PIECE 24" TO 48" AND 48" TO 60" CONE MAY BE USED.
5. WHEN INSTALLED WITHIN PEDESTRIAN ACCESS ROUTES, TOP OF MANHOLE COVERS SHALL HAVE NO VERTICAL SURFACE DISCONTINUITIES GREATER THAN 1/4" WITH ADJACENT SURFACE, HAVE NO GAPS GREATER THAN 1/2" REGARDLESS OF CONSTRUCTION TOLERANCES, AND BE FIRM, STABLE, AND SLIP RESISTANT.

SPECIFICATION REFERENCE		AGENCY APPROVED	B	C	H	L	M	N	R
501	CONCRETE & MORTAR	UNIFORM STANDARD DRAWINGS CLARK COUNTY AREA							
609	CATCH BASINS, MANHOLES & INLETS								
		TYPE I MANHOLE							
		DATE 01-09-20 DWG. NO. 403							