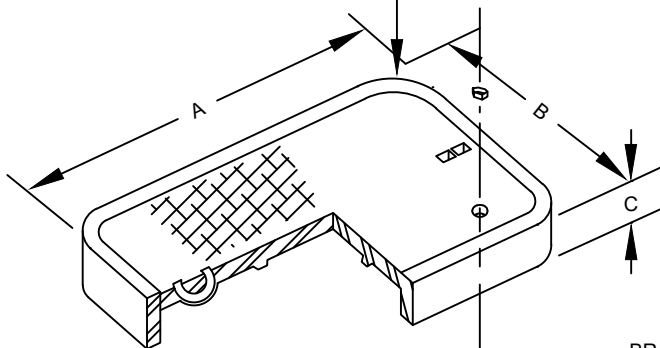
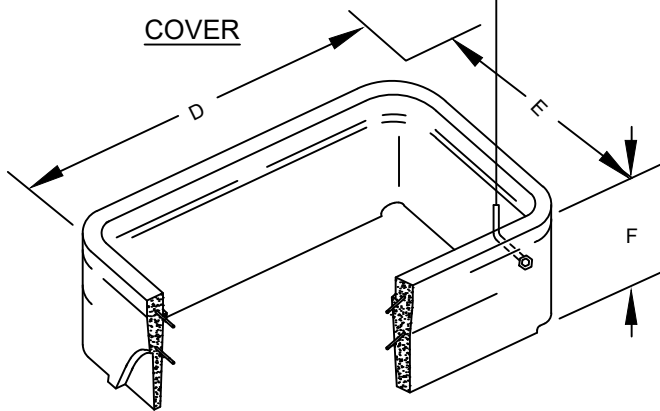


POLYMER COVER FOR PEDESTRIAN AREAS

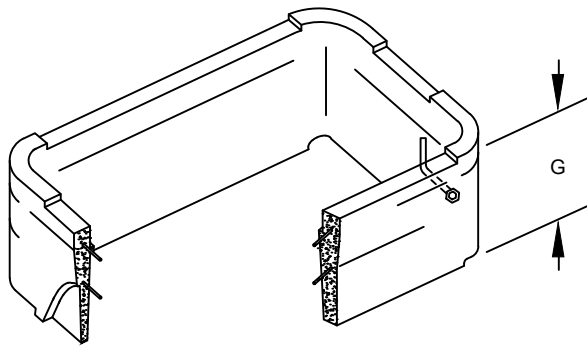


BRASS "L" BOLT AND NUT

COVER



BODY



EXTENSION

AS SPECIFIED BY THE ENGINEER

| PULL BOX | | | |
|----------|----------------------------------|--------|--------|
| | SIZE (COMMERCIAL DESIGNATION) | | |
| | 3-1/2 | 5 | 7 |
| A | 15 | 21-3/4 | 30-5/8 |
| B | 10 | 11-3/4 | 17-5/8 |
| C | 3/4 | 2 | 2 |
| D | 19-3/8 | 25 | 34-3/4 |
| E | 14-3/8 | 15 | 21-3/4 |
| F | 12 | 12 | 12 |
| G | N/A | 10-1/4 | 11-1/2 |

NOMINAL DIMENSION IN INCHES

NOTES

- COVERS INSTALLED IN TRAFFIC AND OPEN AREAS ACCESSIBLE TO TRAFFIC SHALL BE PER STANDARD DRAWING NO. 327.
- SEE STANDARD DRAWING NO. 323 FOR COVER GROUNDING.
- TOP OF UTILITY BOXES INSTALLED IN SIDEWALK SHALL HAVE NO VERTICAL SURFACE DISCONTINUITIES GREATER THAN 1/4" WITH ADJACENT SIDEWALK, HAVE NO GAPS GREATER THAN 1/2" REGARDLESS OF CONSTRUCTION TOLERANCES, AND BE FIRM, STABLE, AND SLIP RESISTANT.

| | | | | | | | |
|-----------------|---|---|---|---|---|---|---|
| AGENCY APPROVED | B | C | H | L | M | N | R |
|-----------------|---|---|---|---|---|---|---|

| | |
|-------------------------|--------------------------------------|
| SPECIFICATION REFERENCE | |
| 503 | PRECAST PRESTRESSED CONCRETE MEMBERS |
| 623 | TRAFFIC SIGNALS & STREETLIGHTING |
| | |
| | |

| | |
|--|--------------|
| UNIFORM STANDARD DRAWINGS CLARK COUNTY AREA | |
| PRECAST REINFORCED CONCRETE PULL BOX | |
| DATE 01-09-20 | DWG. NO. 326 |