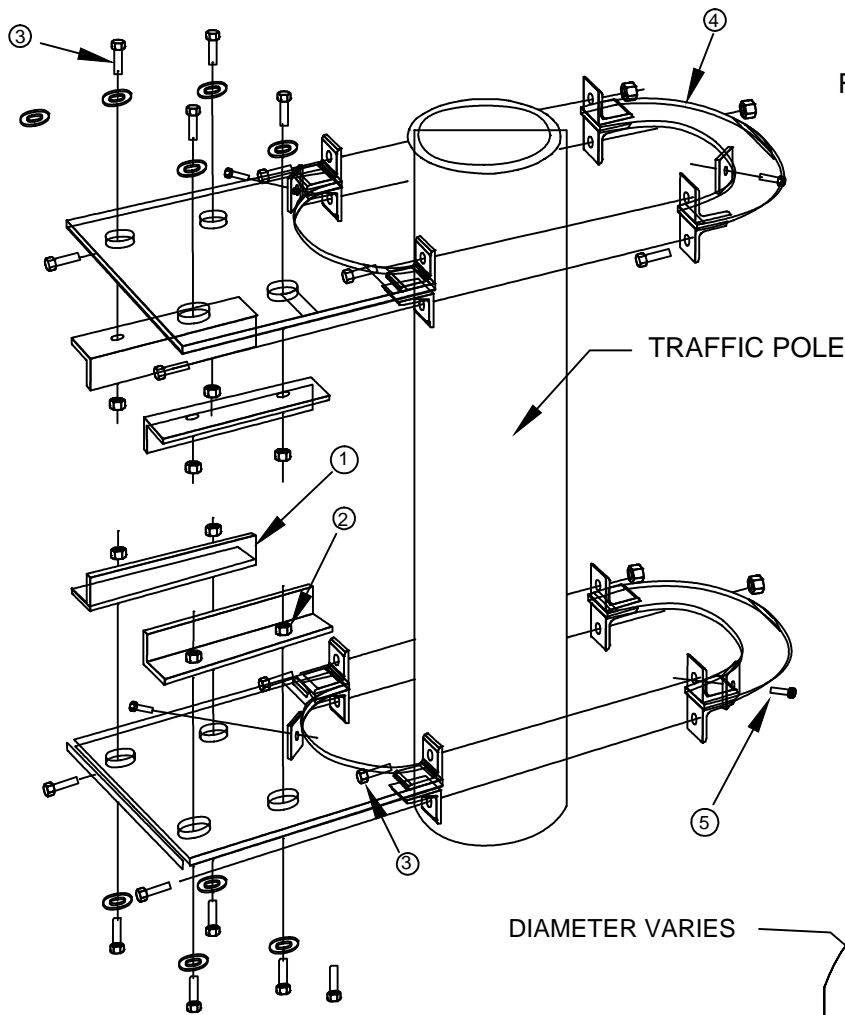


NOTES:

1. SIGN SHALL BE DOUBLE FACED.
2. ALUMINUM EXTRUSION CABINET 12" DEEP - MILL FINISH WITH ALL ALUMINUM INTERNAL STRUCTURE.
3. TOP-HINGED RETAINER SYSTEM WITH PROP ROD FOR ACCESS AND SERVICE.
4. T12 800MA CWHO FLUORESCENT ILLUMINATION INTERNALLY.
5. SIGN PANEL SHALL BE WHITE WIDE-ANGLE PRISMATIC TRANSLUCENT REFLECTIVE SHEETING, EITHER REVERSE-SCREENED WITH MANUFACTURER'S RECOMMENDED GREEN INK AND CLEAR COATING OR OVERLAYED WITH GREEN ELECTRONIC CUTTABLE TRANSPARENT OVERLAY FILM, APPLIED TO A POLYCARBONATE CLEAR SUBSTRATE, 0.177" THICK.
6. LETTERS SHALL BE 8" SERIES E AND UNLESS OTHERWISE SPECIFIED BY THE TRAFFIC ENGINEER, SHALL BE ALL UPPERCASE WITH NO STREET NAME SUFFIX. IF NECESSARY TO MAKE SPACING FIT, REDUCE TO 8" SERIES D. SPACING BETWEEN LETTERS MAY BE INCREASED BY UP TO 25% (MAX) TO ACHIEVE 4" END SPACES.
7. STEEL BRACKETS SHALL BE USED FOR FLAG MOUNT POLE ATTACHMENT.
8. THE USE OF THE POLE MOUNTED STREET NAME SIGN SHALL BE APPROVED BY THE ENTITY ENGINEER.

| | | | | | | | | | | | | | |
|-------------------------|--|---|--|----------|--|-------|--|-------|---|--------|---|---|---|
| | | AGENCY APPROVED | | | | | | B | C | H | L | M | N |
| SPECIFICATION REFERENCE | | UNIFORM STANDARD DRAWINGS CLARK COUNTY AREA | | | | | | | | | | | |
| | | ALTERNATIVE POLE MOUNTED STREET NAME SIGN INTERNALLY ILLUMINATED | | | | | | | | | | | |
| | | | | | | | | | | | | | |
| | | | | | | | | | | | | | |
| | | | | | | | | | | | | | |
| | | | | | | | | | | | | | |
| | | DATE 11/10/05 | | DWG. NO. | | 818.1 | | SHEET | | 1 OF 3 | | | |

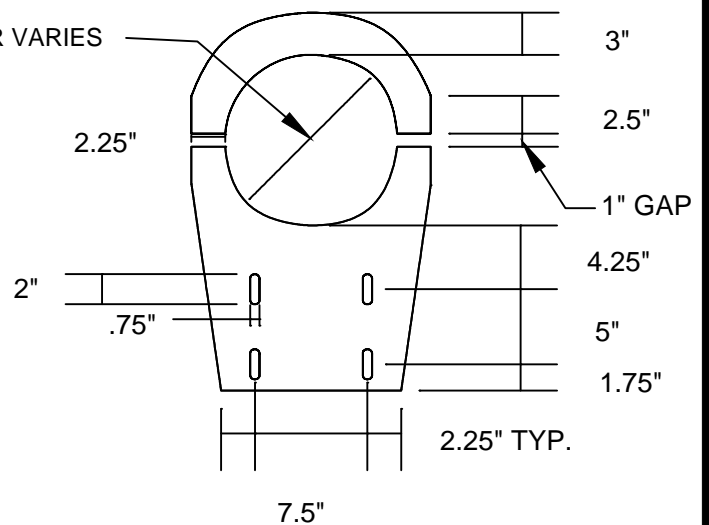


FLAG MOUNT ATTACHMENT DETAIL
NOT TO SCALE

- ① ALUMINUM ANGLE WELDED TO INSIDE OF EXTRUDED CABINET
- ② NUTS WELDED TO ANGLE
- ③ 1/2" X 1 1/2" BOLTS
- ④ BRACKET FABRICATED FROM 3/8" PLATE STEEL
- ⑤ 5/16" SET SCREWS INTO POLE

BRACKET DETAIL
NOT TO SCALE

DIAMETER VARIES



| | | | | | | |
|-----------------|---|---|---|---|---|---|
| AGENCY APPROVED | B | C | H | L | M | N |
|-----------------|---|---|---|---|---|---|

SPECIFICATION REFERENCE

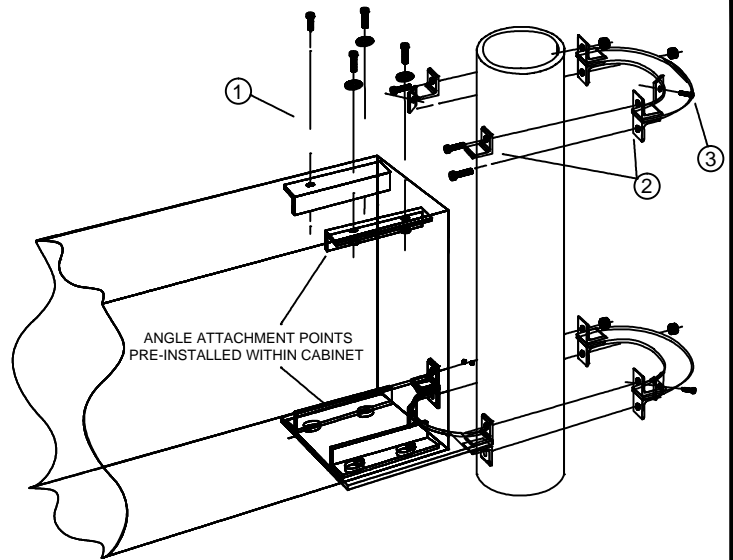
UNIFORM STANDARD DRAWINGS
CLARK COUNTY AREA

ALTERNATIVE POLE MOUNTED STREET
NAME SIGN INTERNALLY ILLUMINATED
ATTACHMENT DETAIL

| | | | | |
|---------------|----------|-------|-------|--------|
| DATE 11/10/05 | DWG. NO. | 818.1 | SHEET | 2 OF 3 |
|---------------|----------|-------|-------|--------|

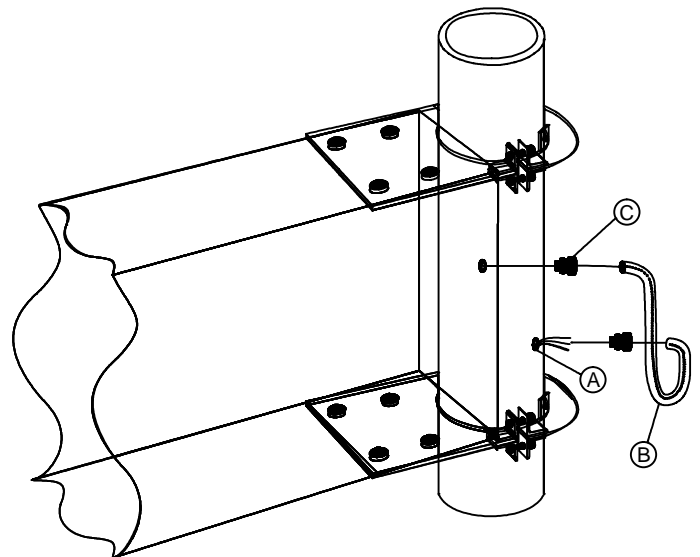
INSTALLATION INSTRUCTIONS

- * ATTACH BRACKETS ① TO CABINET END AT TOP AND BOTTOM WITH BOLTS PROVIDED LOSSELY TIGHTEN BOLTS (SNUG).
- * LIFT CABINET WITH BRACKETS TO POLE AT FINISHED HEIGHT USING A NYLON LIFTING SNAP NEAR THE BRACKETS (WHERE BALANCED).
- * ATTACH BRACKET HALVES ② TOGETHER AROUND POLE WITH PROVIDED HARDWARE AS SHOWN.
- * MOVE LIFTING STRIP TO CENTER OF CABINET & LEVEL THEN TIGHTEN BOLTS INTO CABINET.
- * ATTACH SET SCREWS ③ THROUGH BRACKET INTO POLE AS SHOWN.
- * HOOK UP ELECTRICAL CONNECTION (SEE PAGE 2 FOR AN EXAMPLE).



WIRING RECOMMENDATIONS

- * LOCATE & DRILL A 3/4" DIA. HOLE ① THRU POLE. THREAD HOLE WITH 1/2" PIPE THREAD TAP.
- * PULL WIRES FROM GROUND THRU TAPPED HOLE GUIDE WIRES TO AVOID SCRAPING INSULATION.
- * ASSEMBLE LIQUID TIGHT 1/2" CONDUIT ② & FITTING ③ TO CONNECT POLE TO CABINET.
- * FEED WIRES THRU CONDUIT & INTO CABINET, USE A 2X4 HANDY BOX INSIDE OF CABINET TO FACILITATE WIRE PULLING.
- * AFTER FEEDING WIRES, THEN THREAD FITTINGS INTO THREADED HOLE IN POLE & CABINET.
- * WIRE BALLAST INSIDE CABINET AS REQUIRED.



NOTE: THE STREET NAME SIGN SHALL BE MOUNTED 18" ABOVE THE MAST ARM

| | | | | | | | | |
|-------------------------|--|---|----------|-------|-------|--------|---|--|
| | | AGENCY APPROVED | | | | | | |
| | | B | C | H | L | M | N | |
| SPECIFICATION REFERENCE | | UNIFORM STANDARD DRAWINGS CLARK COUNTY AREA | | | | | | |
| | | ALTERNATIVE POLE MOUNTED STREET NAME SIGN INTERNALLY ILLUMINATED BRACKET DETAIL | | | | | | |
| | | | | | | | | |
| | | | | | | | | |
| | | | | | | | | |
| | | | | | | | | |
| | | DATE 11/10/05 | DWG. NO. | 818.1 | SHEET | 3 OF 3 | | |