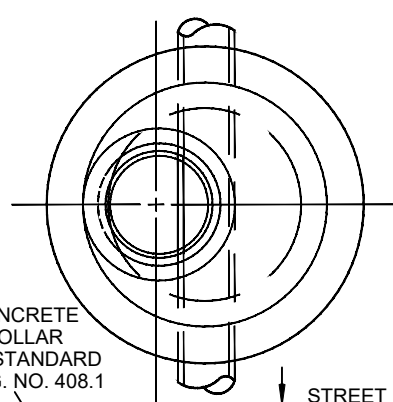
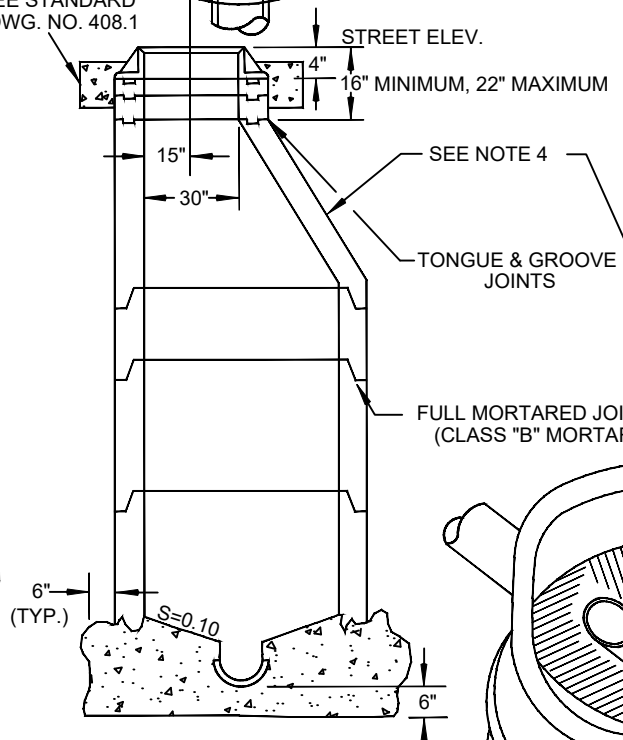


EXPLODED VIEW



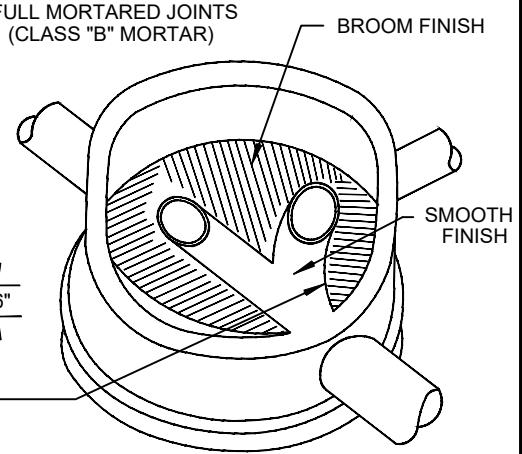
CONCRETE COLLAR
SEE STANDARD
DWG. NO. 408.1



FORM SMOOTH CURVE IN
MANHOLE BASE FOR PIPE
JUNCTION

SYM.	ITEM
A	RING & COVER
B	GRADE ADJUSTING RING
C	1' SECTION REIN. CONC. PIPE
D	2' SECTION REIN. CONC. PIPE
E	3' SECTION REIN. CONC. PIPE
F	BASE

TAPER		HEIGHT
DIA.	H	
48"	36"	
60"	58"	
30" TO 48"	36"	
48" TO 60"	24"	



ISOMETRIC VIEW

NOTES

1. IN UNIMPROVED NON-TRAFFIC AREAS, TOP OF MANHOLE SHALL BE 6" TO 9" ABOVE GRADE.
2. PIPES SHALL NOT PROTRUDE MORE THAN 3" INSIDE OF MANHOLE SECTION. CONSTRUCT WATER TIGHT CONNECTION TO MANHOLE.
3. PIPE SECTION LENGTHS ARRANGED TO FIT DEPTH.
4. AN OPTIONAL TWO PIECE 30" TO 48" AND 48" TO 60" CONE MAY BE USED.
5. THE USE OF A 30" RING AND COVER SHALL BE APPROVED BY THE ENTITY ENGINEER.
6. WHEN INSTALLED WITHIN PEDESTRIAN ACCESS ROUTES, TOP OF MANHOLE COVERS SHALL HAVE NO VERTICAL SURFACE DISCONTINUITIES GREATER THAN 1/4" WITH ADJACENT SURFACE, HAVE NO GAPS GREATER THAN 1/2" REGARDLESS OF CONSTRUCTION TOLERANCES, AND BE FIRM, STABLE, AND SLIP RESISTANT.

AGENCY APPROVED		B	C	H	L	M	N	R
SPECIFICATION REFERENCE		UNIFORM STANDARD DRAWINGS CLARK COUNTY AREA						
501	CONCRETE & MORTAR	TYPE I MANHOLE 30 INCH RING AND COVER						
609	CATCH BASINS, MANHOLES & INLETS							
DATE 01-09-20		DWG. NO. 403.1						