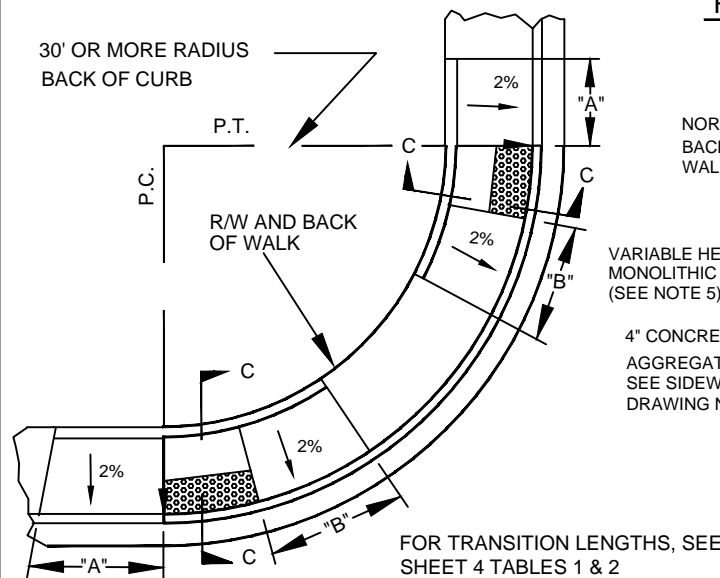
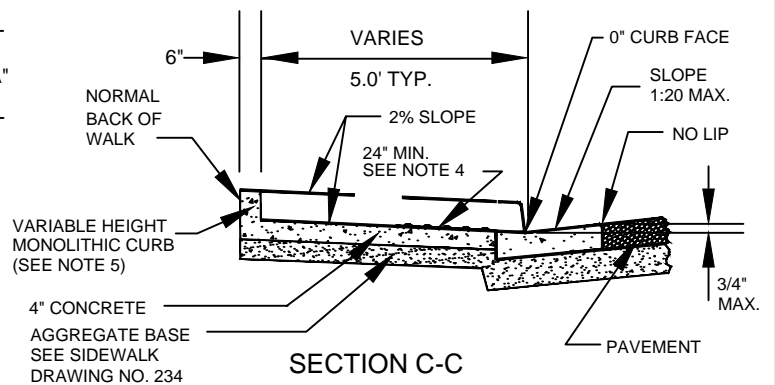


RAMP IN CURB RETURN

RAMP OUTSIDE CURB RETURN



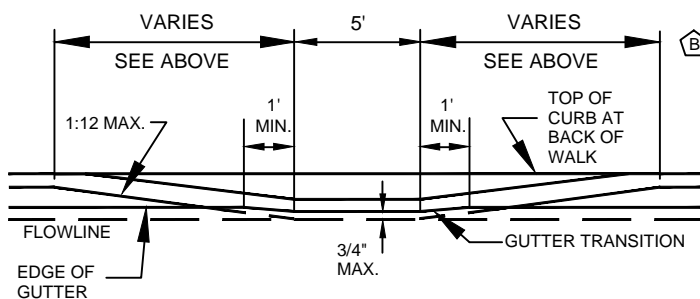
PAIRED RAMP IN CURB RETURN



SECTION C-C

NOTES:

1. SIDEWALK RAMPS OUTSIDE OF THE CURB RETURN SHALL BE LOCATED ADJACENT TO THE RETURN UNLESS OTHERWISE APPROVED.
2. RAMPS SHALL BE CONSTRUCTED WITH A ROUGH BROOM FINISH TRANSVERSE TO THE SLOPE OF THE RAMP.
3. WHEN CONSTRUCTING RAMP WHERE CURB & GUTTER EXISTS, COMPLETELY REMOVE INTERFERING PORTIONS OF EXISTING CURB & GUTTER.
4. DETECTABLE WARNING CONSISTING OF RAISED TRUNCATED DOMES WHICH COMPLY WITH DETAILS ON SHEET 4 OF THIS DRAWING NO. AND CONTRASTING VISUALLY WITH ADJOINING SURFACES SHALL BE PLACED ON BOTTOM PORTION OF RAMP EXTENDING THE FULL WIDTH OF THE RAMP AND TO A MINIMUM DEPTH OF 24 INCHES. PAVER BLOCKS PERMITTED ONLY IN THE CITY OF BOULDER CITY FOR DETECTABLE WARNING AREAS.
5. CURB MAY BE PLACED AND IS PREFERRED BEHIND BACK OF WALK IF SUFFICIENT RIGHT-OF-WAY OR EASEMENTS EXIST AND AS APPROVED BY THE ENGINEER.



PROFILE

AGENCY APPROVED

B C H L M N

SPECIFICATION REFERENCE

302	AGGREGATE BASE
501	CONCRETE
502	CONCRETE STRUCTURES

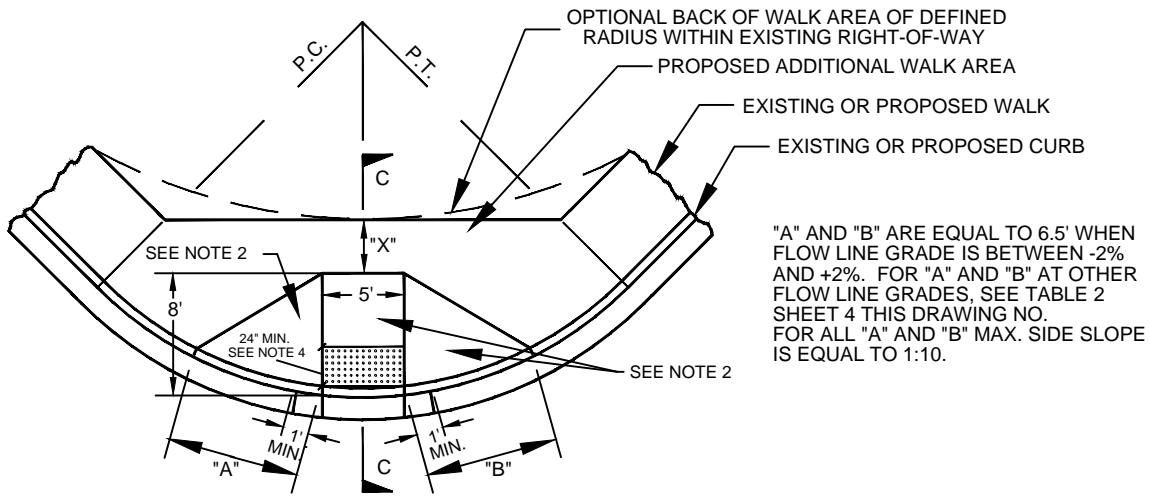
UNIFORM STANDARD DRAWINGS
CLARK COUNTY AREA

SIDEWALK RAMP
CASE I

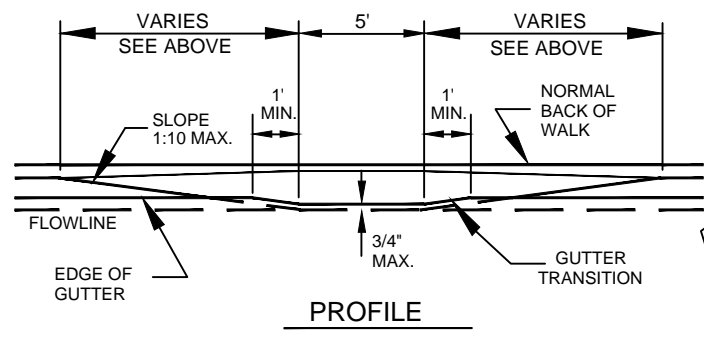
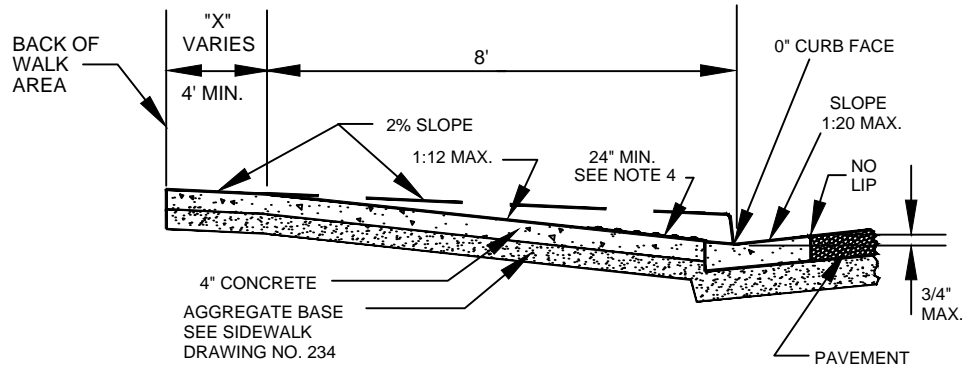
DATE 11-8-07

DWG. NO. 235

SHEET 1 OF 4



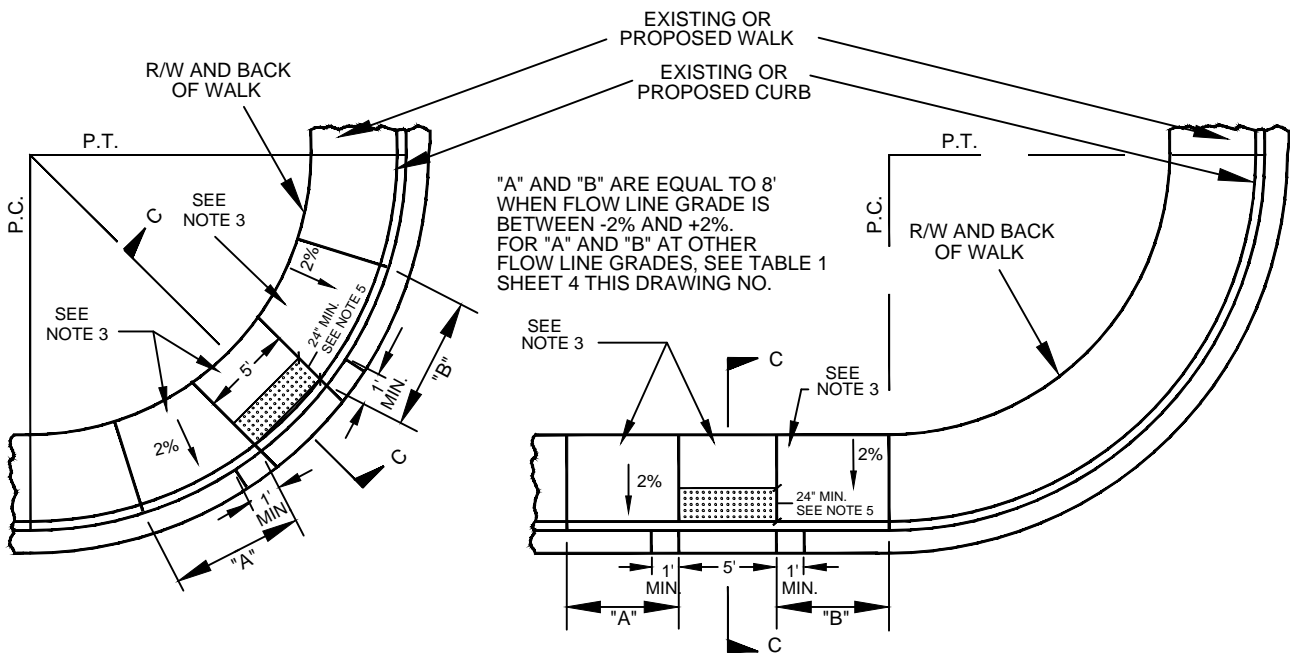
RAMP IN CURB RETURN
(NO BACK OF WALK DEPRESSION)



- NOTES:**
- SIDEWALK RAMP WITHIN CURB RETURN SHALL BE LOCATED AT THE MIDPOINT OF CURB RETURN UNLESS OTHERWISE APPROVED.
 - RAMPS SHALL BE CONSTRUCTED WITH A ROUGH BROOM FINISH TRANSVERSE TO THE SLOPE OF THE RAMP.
 - WHEN CONSTRUCTING RAMP WHERE CURB & GUTTER EXISTS, COMPLETELY REMOVE INTERFERING PORTIONS OF EXISTING CURB & GUTTER.
 - DETECTABLE WARNING CONSISTING OF RAISED TRUNCATED DOMES WHICH COMPLY WITH DETAILS ON SHEET 4 OF THIS DRAWING NO. AND CONTRASTING VISUALLY WITH ADJOINING SURFACES SHALL BE PLACED ON BOTTOM PORTION OF RAMP EXTENDING THE FULL WIDTH OF THE RAMP AND TO A MINIMUM DEPTH OF 24 INCHES. PAVER BLOCKS PERMITTED ONLY IN THE CITY OF BOULDER CITY FOR DETECTABLE WARNING AREAS.

CASE II SHALL BE USED WHERE R/W AND FIELD CONDITIONS PERMIT.

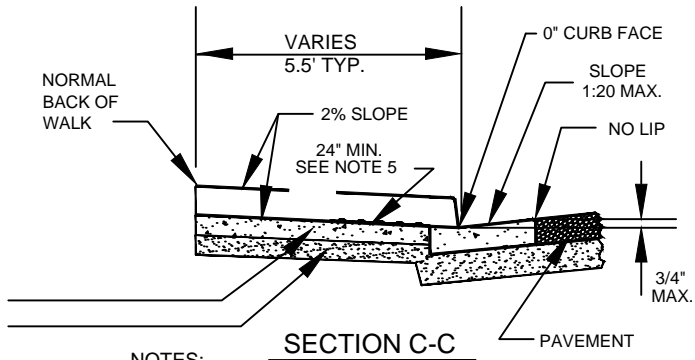
AGENCY APPROVED			C	H	L	M	N
UNIFORM STANDARD DRAWINGS CLARK COUNTY AREA							
SIDEWALK RAMP CASE II							
SPECIFICATION REFERENCE							
302	AGGREGATE BASE						
501	CONCRETE						
502	CONCRETE STRUCTURES						
DATE 11-10-04		DWG. NO. 235			SHEET 2 OF 4		



"A" AND "B" ARE EQUAL TO 8' WHEN FLOW LINE GRADE IS BETWEEN -2% AND +2%. FOR "A" AND "B" AT OTHER FLOW LINE GRADES, SEE TABLE 1 SHEET 4 THIS DRAWING NO.

RAMP IN CURB RETURN

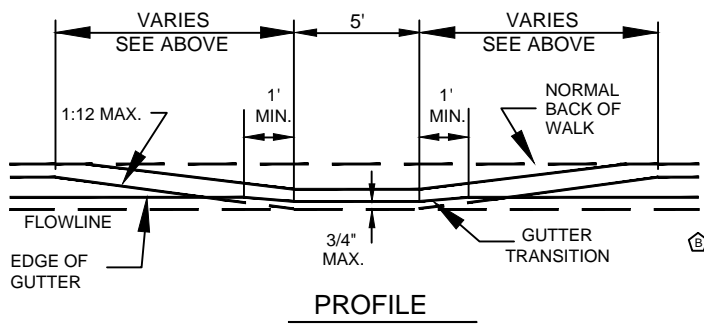
RAMP OUTSIDE CURB RETURN



4" CONCRETE
AGGREGATE BASE
SEE SIDEWALK
DRAWING NO. 234

NOTES:

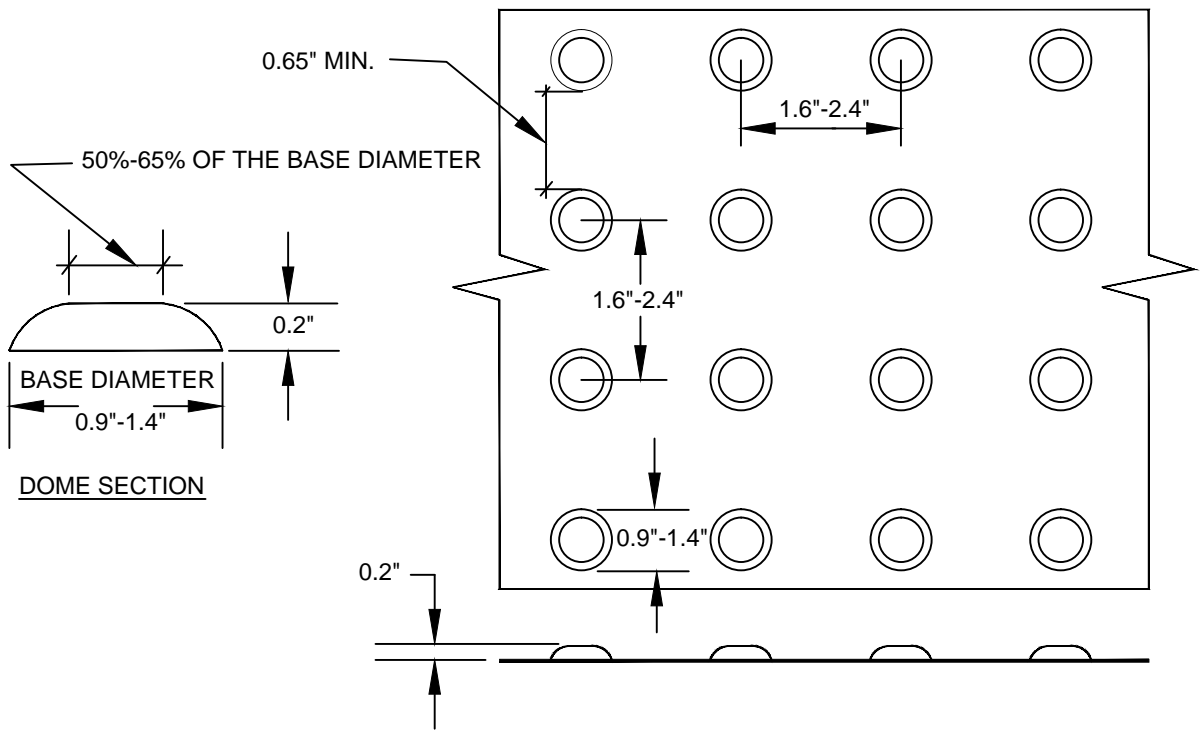
1. SIDEWALK RAMP WITHIN CURB RETURN SHALL BE LOCATED AT THE MIDPOINT OF CURB RETURN UNLESS OTHERWISE APPROVED.
2. SIDEWALK RAMP OUTSIDE OF THE CURB RETURN SHALL BE LOCATED ADJACENT TO THE RETURN UNLESS OTHERWISE APPROVED.
3. RAMPS SHALL BE CONSTRUCTED WITH A ROUGH BROOM FINISH TRANSVERSE TO THE SLOPE OF THE RAMP.
4. WHEN CONSTRUCTING RAMP WHERE CURB & GUTTER EXISTS, COMPLETELY REMOVE INTERFERING PORTIONS OF EXISTING CURB & GUTTER.
5. DETECTABLE WARNING CONSISTING OF RAISED TRUNCATED DOMES WHICH COMPLY WITH DETAILS ON SHEET 4 OF THIS DRAWING NO. AND CONTRASTING VISUALLY WITH ADJOINING SURFACES SHALL BE PLACED ON BOTTOM PORTION OF RAMP EXTENDING THE FULL WIDTH OF THE RAMP AND TO A MINIMUM DEPTH OF 24 INCHES. PAVER BLOCKS PERMITTED ONLY IN THE CITY OF BOULDER CITY FOR DETECTABLE WARNING AREAS.



PROFILE

CASE III TO BE USED FOR AREAS WHERE OBSTRUCTION (I.E. BLOCK WALL) EXISTS AT BACK OF WALK ONLY WHEN APPROVED BY THE ENGINEER.

SPECIFICATION REFERENCE		AGENCY APPROVED	B	C	H	L	M	N
302	AGGREGATE BASE	UNIFORM STANDARD DRAWINGS CLARK COUNTY AREA						
501	CONCRETE							
502	CONCRETE STRUCTURES							
		SIDEWALK RAMP CASE III						
		DATE 11-10-04	DWG. NO. 235			SHEET 3 OF 4		



DETECTABLE WARNING DETAILS (TRUNCATED DOMES)

GRADE (%) "B" TO "A"	"A" (FT) MIN.	"B" (FT) MIN.
-6 TO -5.01	4.5	21.5
-5 TO -4.01	4.5	15.0
-4 TO -3.01	4.5	12.0
-3 TO -2.01	4.5	9.5
-2 TO 2	8.0	8.0
2.01 TO 3	9.5	4.5
3.01 TO 4	12.0	4.5
4.01 TO 5	15.0	4.5
5.01 TO 6	21.5	4.5

TABLE 1. TRANSITION LENGTHS FOR 1:12 SIDE SLOPES

GRADE (%) "B" TO "A"	"A" (FT) MIN.	"B" (FT) MIN.
-6 TO -5.01	4.0	12.5
-5 TO -4.01	4.0	10.0
-4 TO -3.01	4.0	8.5
-3 TO -2.01	4.0	7.5
-2 TO 2	6.5	6.5
2.01 TO 3	7.5	4.0
3.01 TO 4	8.5	4.0
4.01 TO 5	10.0	4.0
5.01 TO 6	12.5	4.0

TABLE 2. TRANSITION LENGTHS FOR 1:10 SIDE SLOPES

NOTE:

CHARTS APPLY TO CURB WITH 6" CURB FACE.
IF CURB HAS GREATER THAN A 6" CURB FACE,
A SPECIAL DESIGN IS REQUIRED.

SPECIFICATION REFERENCE		AGENCY APPROVED					
		B	C	H	L	M	N
302	AGGREGATE BASE	UNIFORM STANDARD DRAWINGS CLARK COUNTY AREA					
501	CONCRETE						
502	CONCRETE STRUCTURES	SIDEWALK RAMP DETAILS					
		DATE 6-8-06		DWG. NO. 235		SHEET 4 OF 4	