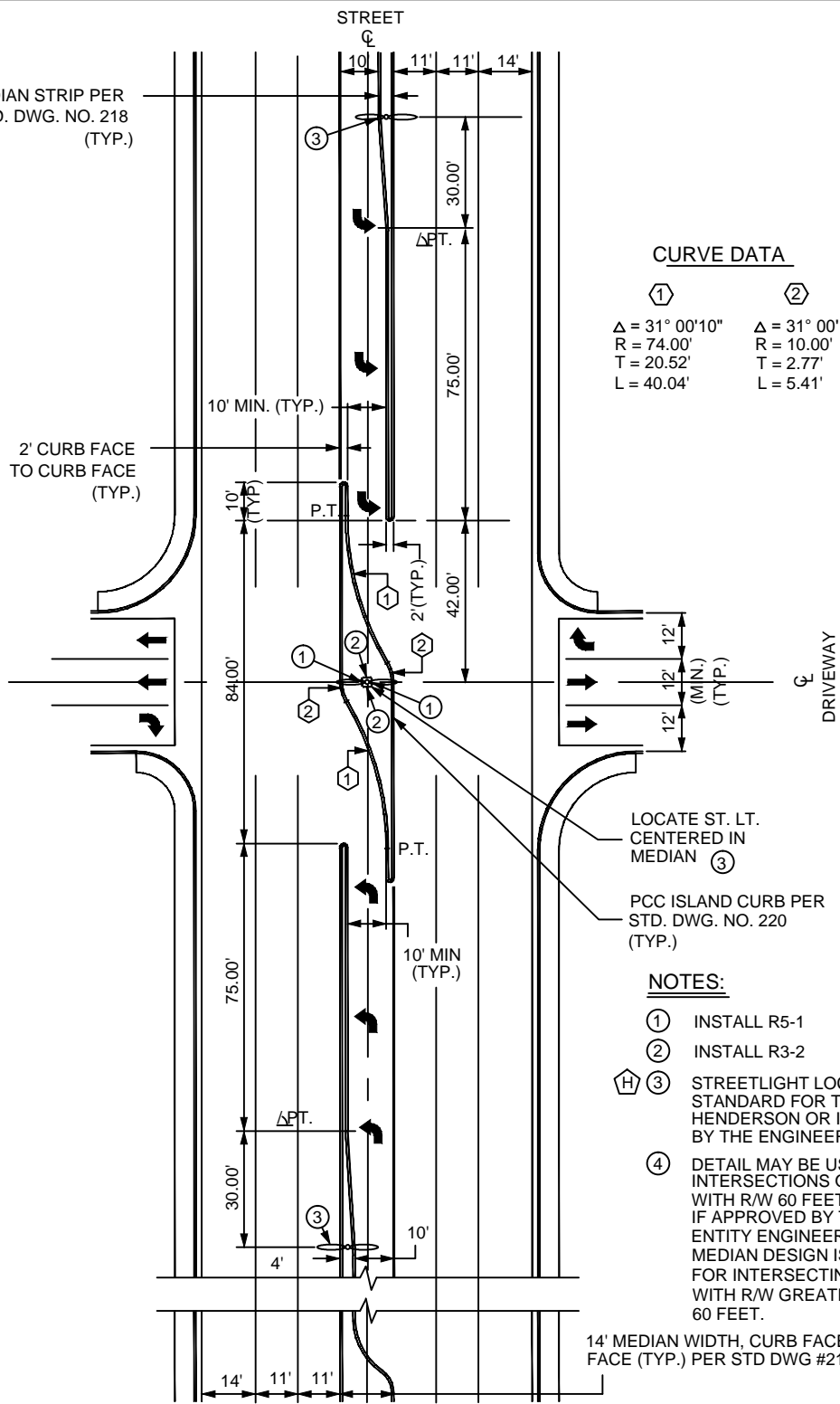


4' PCC MEDIAN STRIP PER  
STD. DWG. NO. 218  
(TYP.)

2' CURB FACE  
TO CURB FACE  
(TYP.)



**CURVE DATA**

①	②
$\Delta = 31^\circ 00' 10''$	$\Delta = 31^\circ 00' 10''$
$R = 74.00'$	$R = 10.00'$
$T = 20.52'$	$T = 2.77'$
$L = 40.04'$	$L = 5.41'$

LOCATE ST. LT.  
CENTERED IN  
MEDIAN ③

PCC ISLAND CURB PER  
STD. DWG. NO. 220  
(TYP.)

**NOTES:**

- ① INSTALL R5-1
- ② INSTALL R3-2
- ③ STREETLIGHT LOCATION  
STANDARD FOR THE CITY OF  
HENDERSON OR IF SPECIFIED  
BY THE ENGINEER.
- ④ DETAIL MAY BE USED FOR  
INTERSECTIONS OF STREETS  
WITH R/W 60 FEET OR LESS  
IF APPROVED BY THE  
ENTITY ENGINEER. SPECIAL  
MEDIAN DESIGN IS REQUIRED  
FOR INTERSECTING STREETS  
WITH R/W GREATER THAN  
60 FEET.

14' MEDIAN WIDTH, CURB FACE TO CURB  
FACE (TYP.) PER STD DWG #218

AGENCY APPROVED	B	C	H	L	M	N
UNIFORM STANDARD DRAWINGS CLARK COUNTY AREA						
CHANNELIZED MEDIAN DETAIL FOR COMMERCIAL DRIVEWAYS OR INTERSECTING STREETS						
DATE	6-9-11	DWG. NO.	221			

SPECIFICATION REFERENCE	