

**UNIFORM STANDARD DRAWINGS  
CLARK COUNTY AREA**

**VOLUME II - YEAR 2008 REVISIONS**

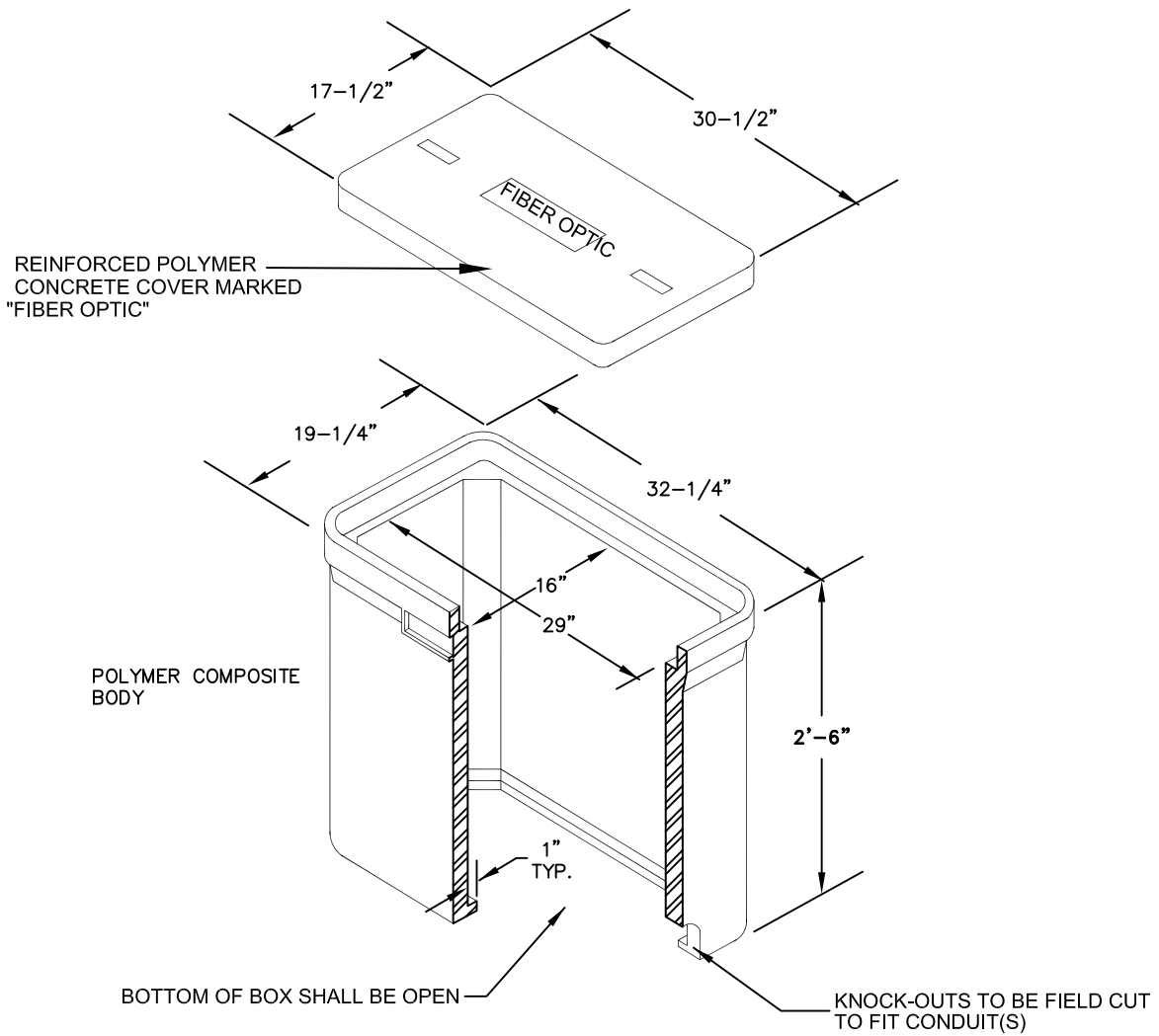
<b>Drawing Number</b>	<b>Title</b>	<b>Nature of Change</b>	<b>Effective Date</b>
404.132	"P30 Pull Box (For Use In Interconnect And Intelligent Transportation System (ITS) Communication Installations)"	Revision to accommodate the requirements of the freeway and arterial system of transportation (FAST).	07/01/08
404.133	"Type 200 Vault (For Use At Fiber Optic Splice Points)"	Revision to accommodate the requirements of the freeway and arterial system of transportation (FAST).	07/01/08
404.142	"ITS Communication Conduit And Pull Box Detail (For Existing Curb And Gutter)"	Addition to accommodate the requirements of the freeway and arterial system of transportation (FAST).	07/01/08
404.143	"Pull Box Concrete Collar In Undeveloped Areas"	Addition to accommodate the requirements of the freeway and arterial system of transportation (FAST).	07/01/08
404.144	"ITS Communication Conduit And Pull Box Detail Installed Under New Sidewalk"	Addition to accommodate the requirements of the freeway and arterial system of transportation (FAST).	07/01/08
404.1500 (Sheet 1)	"Closed Circuit Television Camera"	Addition to create a standard detail for the Closed Circuit Television Camera.	01/01/08
404.1500 (Sheet 2)	"Closed Circuit Television Camera Control Unit and Cable Wiring Diagram"	Addition to create a standard detail for the Closed Circuit Television Camera.	01/01/08
404.1500 (Sheet 3)	"Camera Adaptors Stand "	Addition to create a standard detail for the Closed Circuit Television Camera.	01/01/08

**Sign up for the-mail notification of Uniform Standard Specifications and Drawings updates at:**

<http://www.rtcsonthernnevada.com/mpo/streets/>

**Click on the icon:**



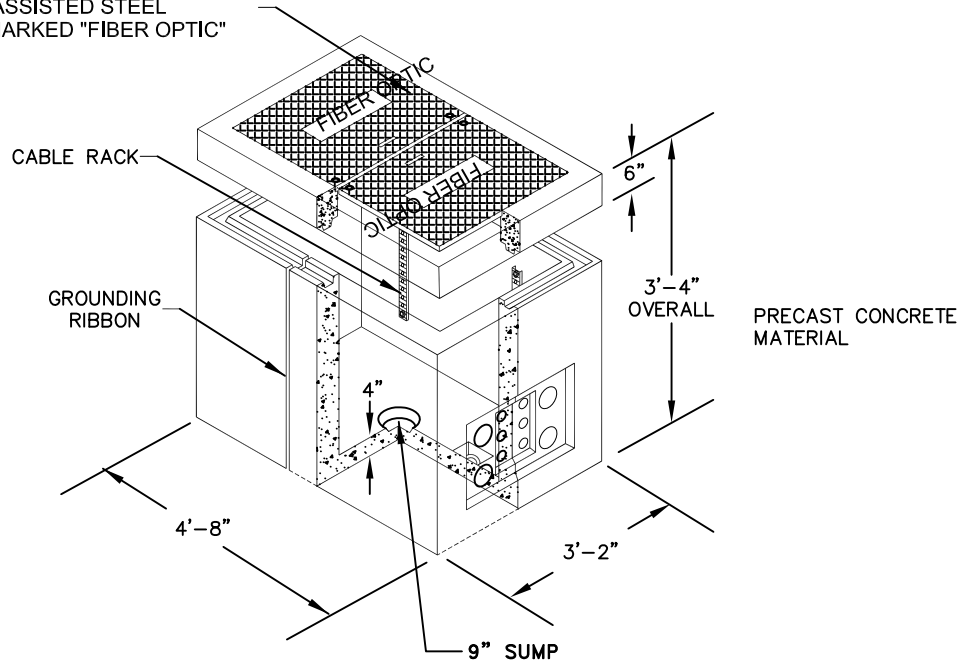


**NOTES:**

1. THIS PULL BOX SHALL NOT BE USED IN TRAVEL OR PARKING LANES.
2. TOP OF BOX SHALL BE LEVEL WITH EXISTING SIDEWALK OR 1" ABOVE EXISTING GRADE IN UNDEVELOPED AREAS AND SIDES SHALL BE VERTICAL.
3. FOR USE IN INTERCONNECT AND ITS COMMUNICATION INSTALLATIONS.

SPECIFICATION REFERENCE		UNIFORM STANDARD DRAWINGS CLARK COUNTY AREA		
		"P30" PULL BOX (FOR USE IN INTERCONNECT AND ITS COMMUNICATION INSTALLATIONS)		
		DATE 3-13-08	DWG. NO. 404.132	SHEET 1 OF 1

ADJUSTABLE TORSION  
 SPRING ASSISTED STEEL  
 COVER MARKED "FIBER OPTIC"

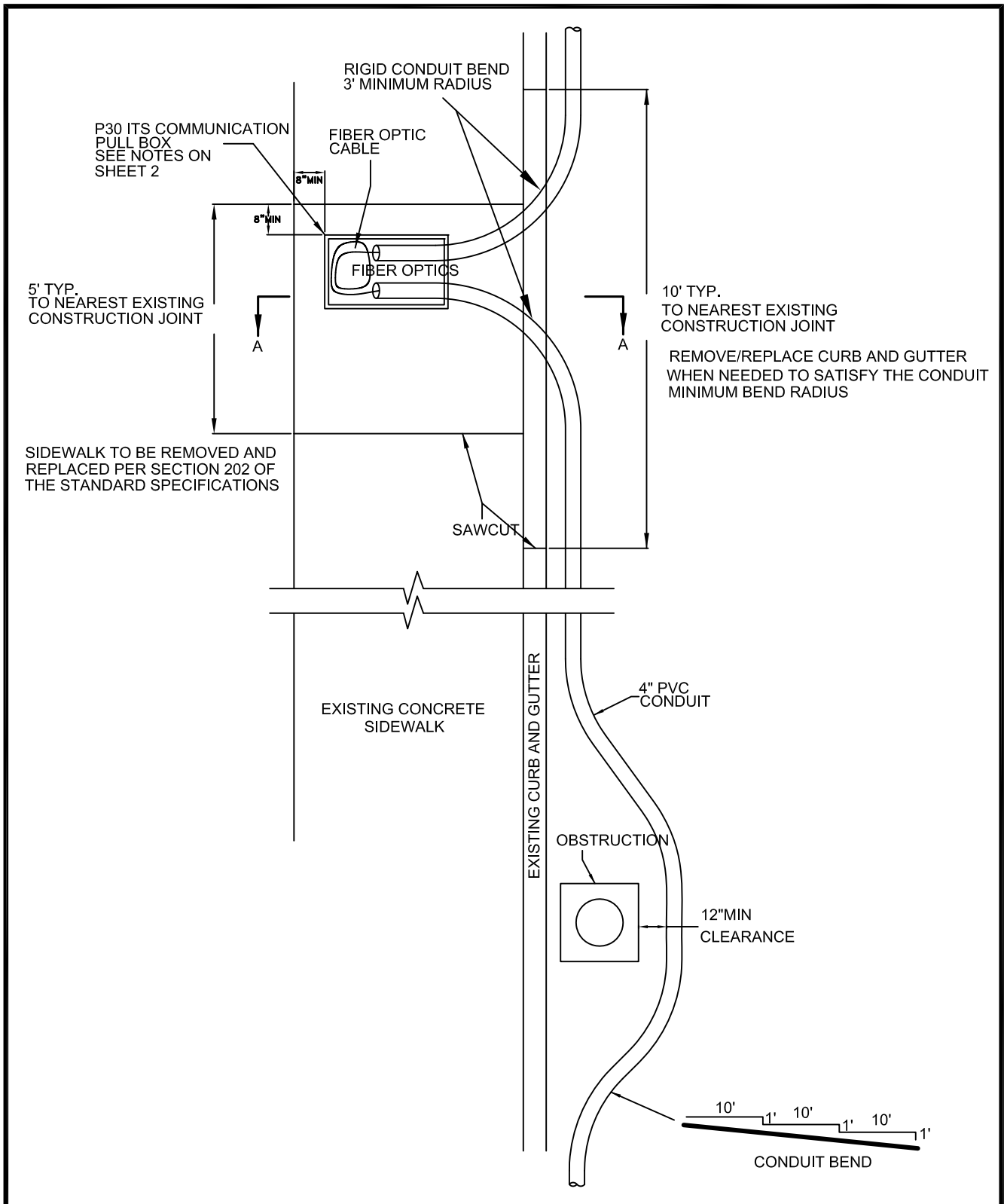


NOTES:

1. DESIGN LOAD: H-20 WHEEL LOADINGS.
2. SUITABLE FOR USE IN OFF STREET LOCATIONS WHERE NOT SUBJECT TO HIGH DENSITY TRAFFIC. IT SHALL NOT BE USED IN TRAVEL OR PARKING LANES.
3. INSIDE DIMENSIONS - 30"X48"X36"
4. FOR USE AT FIBER OPTIC SPLICE POINTS.

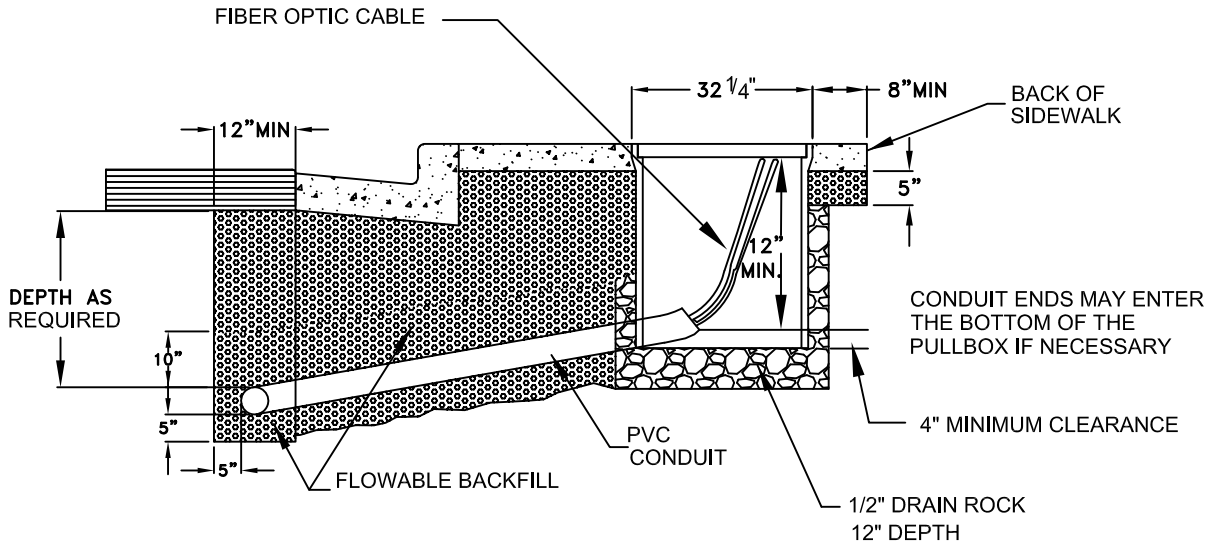
TYPE 200 VAULT

SPECIFICATION REFERENCE		UNIFORM STANDARD DRAWINGS CLARK COUNTY AREA		
		TYPE 200 VAULT ( FOR USE AT FIBER OPTIC SPLICE POINTS )		
		DATE 3-13-08	DWG. NO. 404.133	SHEET 1 OF 1



SPECIFICATION REFERENCE	UNIFORM STANDARD DRAWINGS CLARK COUNTY AREA
	ITS COMMUNICATION CONDUIT AND PULL BOX DETAIL (FOR EXISTING CURB & GUTTER)
	DATE 3-13-08      DWG. NO. 404.142      SHEET 1 OF 2

PULL BOX MAY ALSO BE PLACED  
NEAR THE BACK OF CURB WITH  
A MIN. 8" CLEARANCE

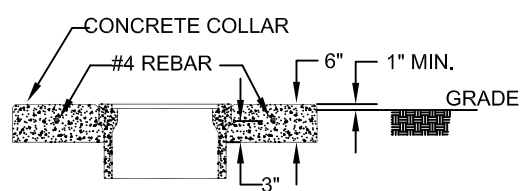
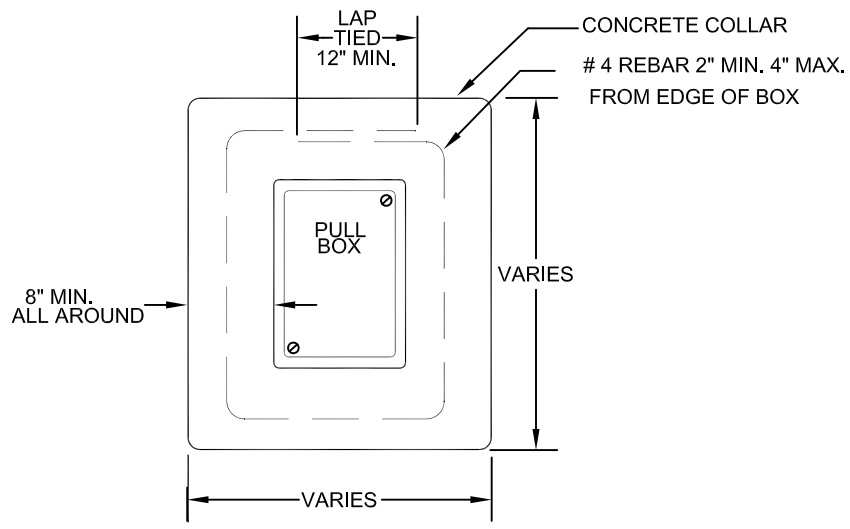


SECTION A-A

NOTES:

- 1 P30 PULL BOX SHALL BE INSTALLED FOR THE TRAFFIC SIGNAL ITS COMMUNICATIONS PER APPLICABLE STANDARDS.
- 2 PULL BOX COVER SHALL BE INSCRIBED "FIBER OPTICS".
- 3 APPROXIMATE LOCATIONS OF THE PROPOSED P30 ITS COMMUNICATION PULL BOXES ARE SHOWN ON THE PLANS. THE CONTRACTOR SHALL BE RESPONSIBLE FOR MARKING THE LOCATIONS OF THE PROPOSED ITS COMMUNICATION PULL BOXES IN THE FIELD PER STANDARD STANDARD SPECIFICATION INTERVALS AND THESE LOCATIONS SHALL BE SUBJECT TO APPROVAL OF THE ENGINEER BEFORE INSTALLATION.
- 4 DETAIL SHOWS METHOD OF INSTALLATION WHEN FIBER OPTIC CABLE IS REQUIRED.

SPECIFICATION REFERENCE		UNIFORM STANDARD DRAWINGS CLARK COUNTY AREA		
		ITS COMMUNICATION CONDUIT AND PULL BOX DETAIL (FOR EXISTING CURB & GUTTER)		
		DATE 3-13-08	DWG. NO. 404.142	SHEET 2 OF 2



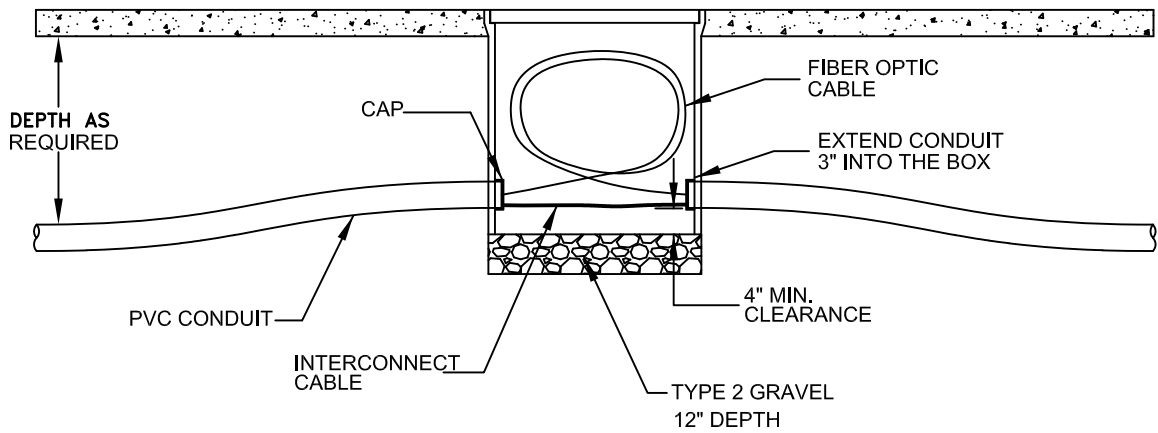
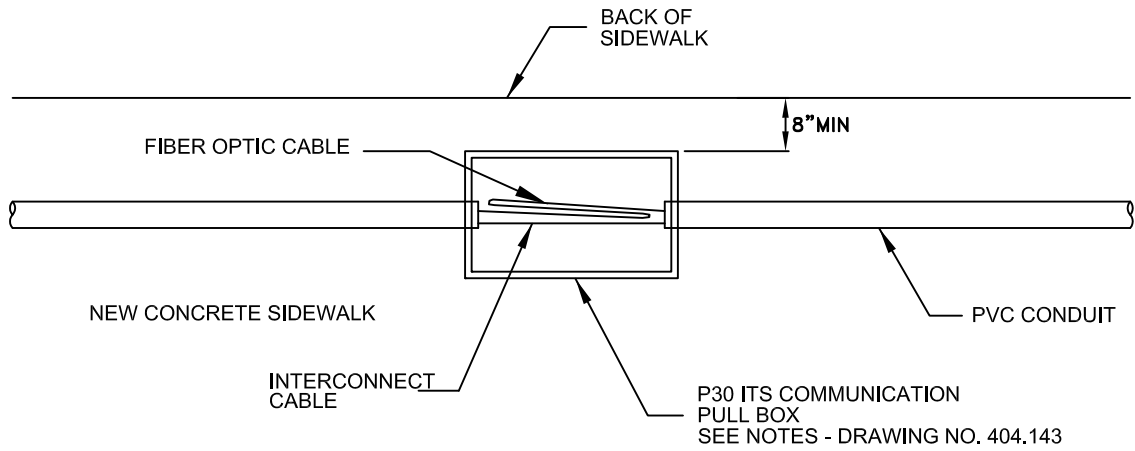
TYPICAL SECTION

PULL BOX CONCRETE COLLAR  
IN UNDEVELOPED AREAS

NOTES:

- 1 P30 PULL BOXES SHALL BE INSTALLED FOR THE SIGNAL ITS COMMUNICATIONS PER APPLICABLE STANDARDS.
- 2 PULL BOX COVER SHALL BE INSCRIBED "FIBER OPTIC".
- 3 LOCATIONS OF THE PROPOSED P30 ITS COMMUNICATION PULL BOXES SHOWN ON THE PLANS ARE APPROXIMATE. THE CONTRACTOR SHALL BE RESPONSIBLE FOR MARKING THE LOCATIONS IN THE FIELD AT APPROXIMATELY 500 FEET INTERVALS. THESE LOCATIONS SHALL BE SUBJECT TO APPROVAL BY THE ENGINEER BEFORE INSTALLATION.
- 4 DETAIL SHOWS METHOD OF INSTALLATION WHEN FIBER OPTIC CABLE IS REQUIRED.
- 5 CONDUIT SIZES SHALL BE PER UNIFORM STANDARD SPECIFICATIONS, SECTION 623.
- 6 ALL CONDUITS SHALL HAVE A CONTINUOUS RUN OF 6 PAIR PE39 #22 AWG INTERCONNECT CABLE.
- 7 UNDERGROUND ORANGE MARKING TAPE SHALL BE PLACED 12 INCHES ABOVE THE INSTALLED CONDUIT AND MARKED WITH THE LEGEND "FIBER OPTIC".

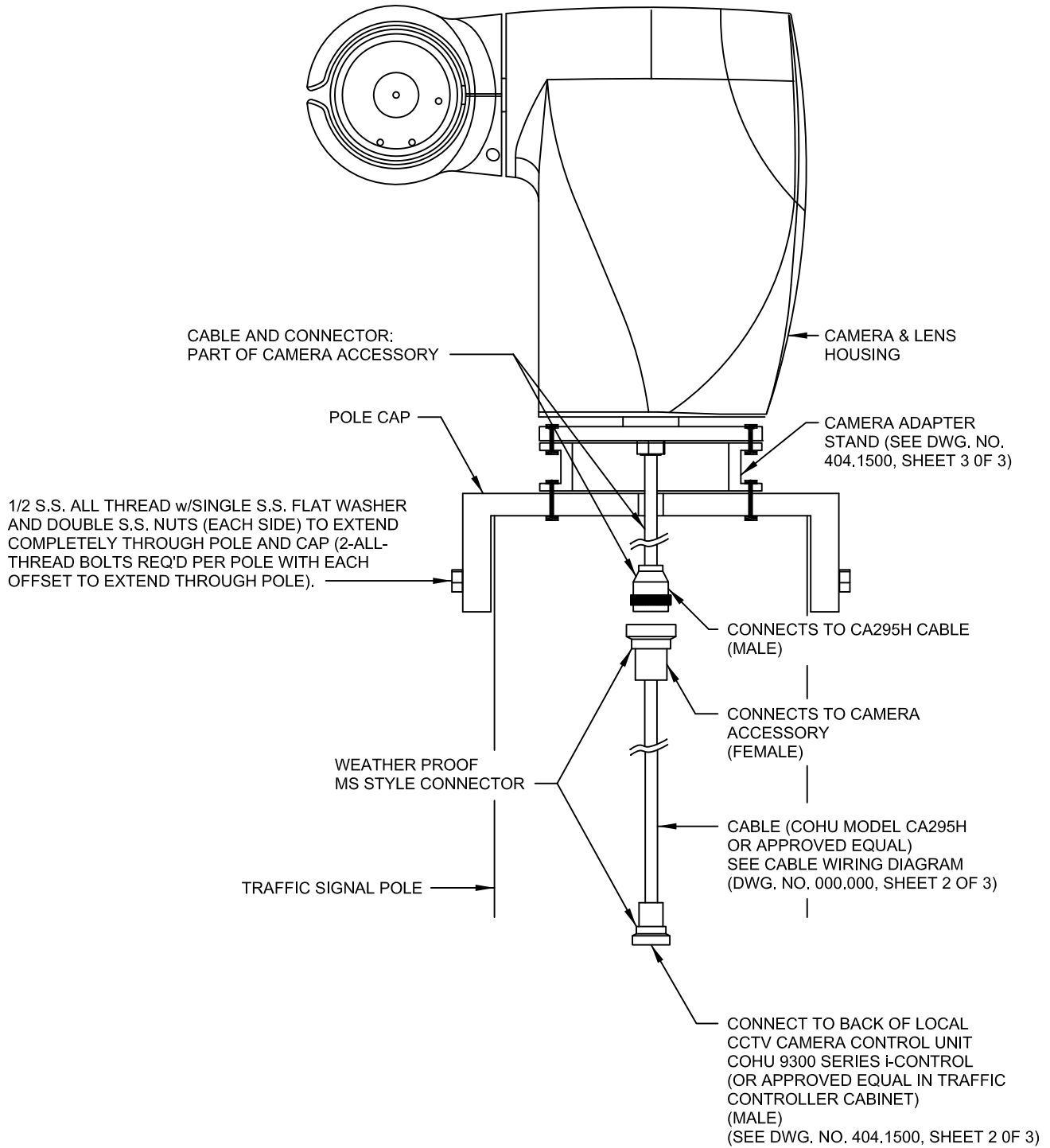
SPECIFICATION REFERENCE	UNIFORM STANDARD DRAWINGS CLARK COUNTY AREA		
	PULL BOX CONCRETE COLLAR IN UNDEVELOPED AREAS		
	DATE 3-13-08	DWG. NO. 404.143	SHEET 1 OF 1



SPECIFICATION REFERENCE		UNIFORM STANDARD DRAWINGS CLARK COUNTY AREA					
		<p align="center">ITS COMMUNICATION CONDUIT AND PULL BOX DETAIL INSTALLED UNDER NEW SIDEWALK</p>					
		DATE	3-13-08	DWG. NO.	404,144	SHEET	1 OF 1

# CCTV CAMERA

COHU 3965 - 4101  
(OR APPROVED EQUAL)



FOR CCTV AND CONTROL UNIT DETAILS  
SEE 687 SPECIFICATIONS.

SPECIFICATION REFERENCE		UNIFORM STANDARD DRAWINGS CLARK COUNTY AREA		
		<b>CLOSED CIRCUIT TELEVISION CAMERA</b>		
		DATE 11-8-07	DWG. NO. 404.1500	SHEET 1 OF 3

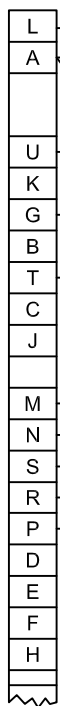


CONNECTOR  
(MAIN)

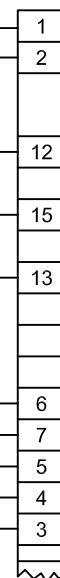
AC38 7610176-001

CONNECTOR  
(AMP)

VIDEO OUT  
VIDEO SHIELD



COAX



VIDEO  
VIDEO GND

115 VAC HI

AC GND

115 VAC LO

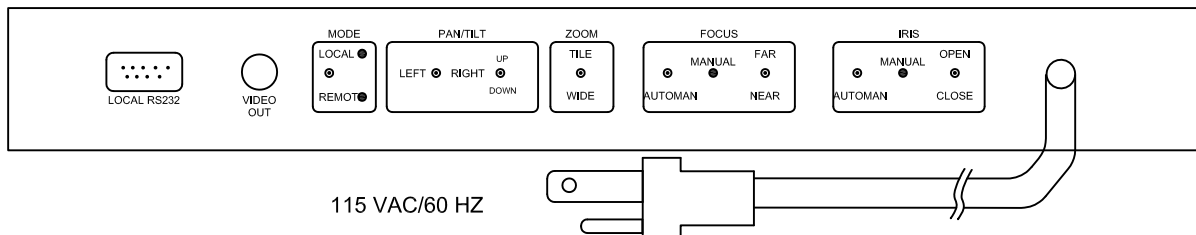
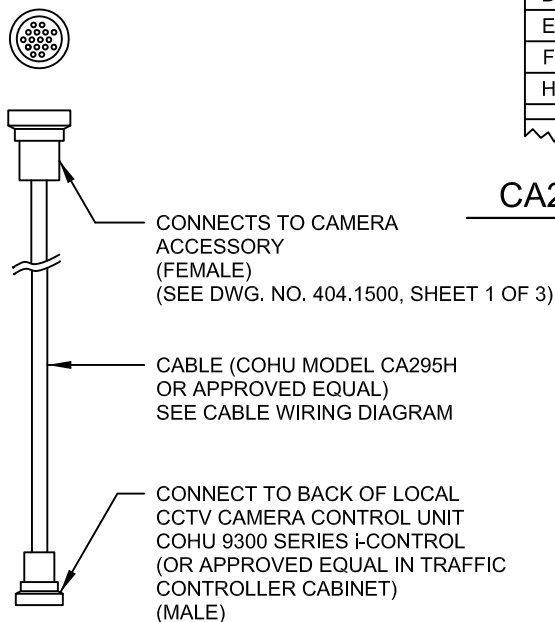
RS422  
RX+  
RX-  
TX+  
TX-  
DATA GND

BLK #22  
RED #22  
GRN #22  
YEL #22  
WHT #22  
BLU #22

WHT #26  
BLK #26  
RED #26  
GRN #26  
BLU #26  
ORG# 26  
YEL #26  
WHT/BLK #26  
RED/GRN #26

TX+  
TX-  
RX+  
RX-  
DATA GND

**CCTV CAMERA  
CA295H CABLE WIRING DIAGRAM**



**LOCAL CCTV CAMERA CONTROL UNIT  
COHU 9300 SERIES i-CONTROL  
(OR APPROVED EQUAL)  
(IN TRAFFIC CONTROLLER CABINET)**

SPECIFICATION REFERENCE

UNIFORM STANDARD DRAWINGS  
CLARK COUNTY AREA

**CLOSED CIRCUIT TELEVISION CAMERA  
CONTROL UNIT AND  
CABLE WIRING DIAGRAM**

DATE 11-8-07

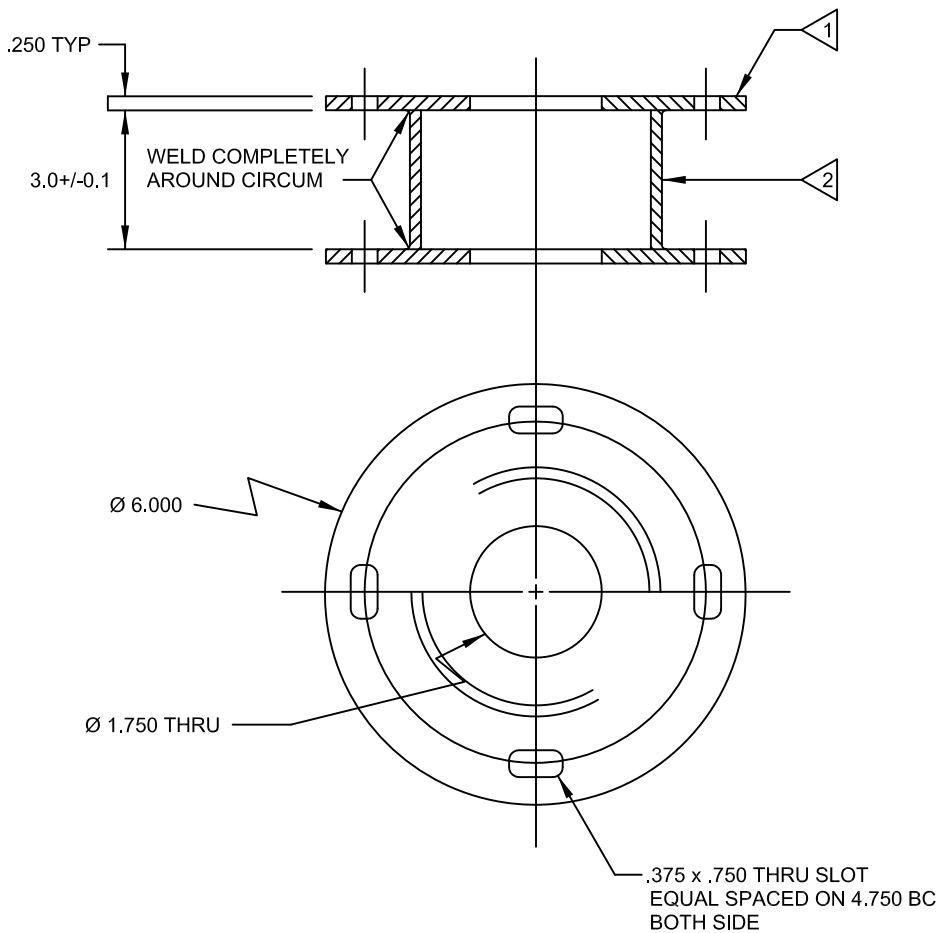
DWG. NO. 404.1500

SHEET 2 OF 3

# CAMERA ADAPTER STAND

(REQUIRED FOR POLE CAP MOUNTING)

- 1. MAT'L (FLANGE): 1018 STEEL OR EQUIV.
- 2. MAT'L (TUBE):  $\varnothing$  3.5 X 1/8 WALL 1018 STEEL OR EQUIV
- 3. FINISH: YELLOW CHROMATE CONVERSION COAT TYPE I PER MM-42 OR MIL-C-5541B CLASS 1A
- 4. PAINT ALL SURFACES LIGHT GRAY METAL FINE USING 3310042-478 PER MM-33 OR FEDERAL TEST METHOD STD NO.141. FINE TEXTURE OUTSIDE SURFACE ONLY AND OVERSPRAY PERMITTED.
- 5. REMOVE ALL BURRS AND SHARP EDGES 0.015 MAX



**NOTE:**

A 10' EXTENSION PROVIDED WHEN REQUIRED  
DESIGNED BY INSTALLER AND APPROVED BY RTC-FAST.

SPECIFICATION REFERENCE	UNIFORM STANDARD DRAWINGS CLARK COUNTY AREA		
	CAMERA ADAPTOR STAND		
	DATE 11-8-07	DWG. NO. 404.1500	SHEET 3 OF 3