

**UNIFORM STANDARD DRAWINGS
CLARK COUNTY AREA**

VOLUME II - YEAR 2000 REVISIONS

<u>DRAWING NUMBER AND TITLE</u>	<u>SHEET NUMBER(S)</u>	<u>NATURE OF CHANGE</u>	<u>EFFECTIVE DATE</u>
404.201 Type "A" Foundation	1	Revised requirement for single strand bare copper ground wire to 7-strand.	10/1/00
404.202 Type "B" Foundation	1	"	"
404.203 Type "C" Foundation	1	"	"
404.205 Type "E" Foundation	1	"	"
404.206 Type "F" Foundation	1	"	"
404.207 Type "G" Foundation	1	"	"
404.208 Type "H" Foundation	1	"	"
404.209 Type "L" Foundation	1	"	"
404.211 Type "I" Foundation	1	"	"
404.213 Type "J & K" Foundations	1	"	"
404.214 Service Pedestal Foundation	1	"	"

Revised December 2000

FOREWORD

UNIFORM STANDARD DRAWINGS FOR PUBLIC WORKS' CONSTRUCTION, OFFSITE IMPROVEMENTS, CLARK COUNTY AREA, NEVADA VOLUME II

The Uniform Standard Drawings for Public Works Construction may be revised by issuance of revisions or supplements to correct errors and omissions found in these drawings and to reflect advanced thinking and the changing technology of the construction industry. Each revision will supersede any previous pertinent drawing. Upon approval by the Regional Transportation Commission, revisions will be posted to the RTC website, www.rtc.co.clark.nv.us, on the first day of the month following the meeting. **This volume contains all revisions through December 2000.**

To implement this end a Specifications Committee has been established as a permanent organization to continually study and recommend changes to the standard drawings. Interested parties may address suggested changes and questions to the Regional Transportation Commission, 600 South Grand Central Parkway, Suite 350, Las Vegas, Nevada, 89106-4512.

UNIFORM STANDARD DRAWINGS, CLARK COUNTY AREA

TABLE OF CONTENTS

VOLUME II
SECTION 404
TRAFFIC SIGNALS

DRAWING NUMBER

SYMBOLS

404.001	Standard Symbols for Traffic Signal Drawings (2 sheets)
404.002	Quadrant Detail

PULL BOXES

404.110	No. 3 1/2 Pull Box
404.120	No. 5 Pull Box
404.121	Reinforced Plastic Mortar Service Box Assembly #5
404.130	No. 7 Pull Box
404.131	Reinforced Plastic Mortar Service Box Assembly #7
404.139	Steel Pull Boxes
404.140(SH1)	Pull Box Street Cover
404.140(SH2)	Pull Box Cover Bonding Detail
404.141	Pull Box Foundation

FOUNDATIONS

404.201	<i>Type "A" Foundation</i>
404.202	<i>Type "B" Foundation</i>
404.203	<i>Type "C" Foundation</i>
404.204	DELETED
404.205	<i>Type "E" Foundation</i>
404.206	<i>Type "F" Foundation</i>
404.207	<i>Type "G" Foundation</i>
404.208	<i>Type "H" Foundation</i>
404.209	<i>Type "L" Foundation</i>
404.211	<i>Type "I" Foundation</i>
404.213	<i>Type "J" and "K" Foundation</i>
404.214	<i>Service Pedestal Foundation</i>

SECTION 404

TRAFFIC SIGNALS CONTINUED

DRAWING NUMBER

CABINET

404.304	Type V Cabinet
404.305	Type VI Cabinet
404.307	Type VIII Cabinet
404.308	Type IX Cabinet
404.309	Flashing Beacon Controller Cabinet
404.310	Wiring Diagram for Flashing Beacon Timer Controlled Operation

PRIORITY VEHICLE PREEMPTION SYSTEM

404.320	DELETED - See Uniform Standard Specifications Subsection 623T.02.12
---------	---

POLES AND POSTS

404.400(SH1)	School Flashing Sign on Pole with Luminaire
404.400(SH2)	School Flashing Sign on Type-III Pole
404.401(SH1)	Pedestrian Push Button Post for Special Sign (8'-6")
404.401(SH2)	Pedestrian Push Button Post for 2-½" Post Top Mounting
404.402	Signal Standard Type 1-A, 1-B
404.403	Sign Post with School Sign Mounted (2 sheets)
404.404	DELETED
404.405	Pedestal for Controller Cabinets
404.406	Type XX & XX-A -- 30' Signal and Luminaire Pole (6 sheets)
404.407(SH1)	Type XX -- 20' Signal Pole (45' or Less Mast Arms)
404.407(SH2)	Type XXA -- 20'-0" (50' through 60' Mast Arms) Signal Pole
404.408	DELETED
404.409(SH1)	Base Adaptor Plate for Type "H" Foundation
404.409(SH2)	Base Adaptor Plate for Type "L" Foundation
404.410	30' Luminaire with School Flashing Sign
404.411	School Sign Mounted on a Traffic Signal Standard
404.412	School Sign Pole Type XX -- 30'
404.413	School Sign Pole Type XX -- 20'
404.414	Streetlighting Pole with Illuminated Street Name Sign
404.415	Type III Pole with Illuminated Street Name Sign

SECTION 404

TRAFFIC SIGNALS
CONTINUED

DRAWING NUMBER

POLES AND POSTS (CON'T)

404.416	Type XX Pole with Illuminated Street Name Sign
404.417	Street Name Sign Internally Illuminated
404.418	Sign Mounting Illustration
404.420	Block Number Sign

MAST ARMS AND ASSEMBLIES

404.500	DELETED
404.501	DELETED
404.502	One Bolt Simplex Arm Attachment Clamp Assembly
404.503	Retrofit Streetlight Mast Arm

DRILLING DETAILS

404.600	Pole Drilling Details
404.601	Island Signal Pole Details for 10' Pole

ISLAND EQUIPMENT

404.700	Island Signal Location
---------	------------------------

DETECTORS

404.800	DELETED - See Uniform Standard Specifications Subsection 623T.02.04
404.801	DELETED - See Uniform Standard Specifications Subsection 623T.02.04
404.810	Sawcut Details for Induction Loops
404.811	Details at Loop Pull Box
404.820	1 Induction Loop for 1 Travel Lane
404.821(SH1)	1 Induction Loop for 2 Travel Lanes
404.821(SH2)	2 Induction Loops for 2 Travel Lanes
404.822(SH1)	1 Induction Loop for 3 Travel Lanes
404.822(SH2)	3 Induction Loops for 3 Travel Lanes
404.823(SH1)	1 Induction Loop for 4 Travel Lanes
404.823(SH2)	4 Induction Loops for 4 Travel Lanes

SECTION 404

TRAFFIC SIGNALS
CONTINUED

DRAWING NUMBER

DETECTORS (CON'T)

404.825	3 Induction Loops for 3 Travel Lanes
404.826	Multiple Loop System for Thru Lane
404.827	Multiple Loop System for for Left Turn Pocket
404.828	Type "Quadrupole" Loop Installation
404.829	Wire Diagrams for Multiple Loop Systems for Left Turn Pocket and Thru Lane
404.830	Circular Induction Loops for Travel Lanes
404.851	Pedestrian Push Button Detectors

BACK PLATES

404.900	Louvered Backplate for Mast Arm Mounted Signal
404.901	Louvered Backplate for Pole Mounted Signal
404.902	Louvered Backplate for 5 Section Signal Head
404.903	Louvered Backplate for 5 Section Signal Head

SIGNAL UNITS

404.1005	Bill of Materials - Signal Assemblies
----------	---------------------------------------

SIGNAL ASSEMBLIES

404.1011	Types: A-1, A-2T, A-3
404.1012	Types: A-4T, A-5T
404.1013	Type: A-6T
404.1015	Types: A-8T, A-9T
404.1016	Types: A-10T, A-11T
404.1017	Types: A-12T, A-13T
404.1018	Types: A-14T, A-15T
404.1019	Type: A-16T
404.1020	Type: A-17T

SECTION 404

TRAFFIC SIGNALS CONTINUED

DRAWING NUMBER

MAST ARM SIGNAL ASSEMBLIES

404.1022 Types: M-2A, M-3A
404.1023 Types: M-3, M-2

SIGNAL ASSEMBLIES

404.1024 Types: B-1T, B-2T, B-3T
404.1025 Types: B-5T, B-6T
404.1026 Types: B-7T, B-8T, B-9T
404.1027 Types: B-10, B-11T
404.1028 Types: B-12T, B-13T
404.1029 Type: B-14T
404.1030 Protective/Permissive M-5 Signal Heads
404.1031 Protective/Permissive M-5 Signal Heads, Assemblies and Part List
 (3 sheets)
404.1032 Pedestrian Signal Assemblies W-0T, W-1, W-2T, W-3T, W-1T
404.1033 **DELETED**
404.1034 Pedestrian Push Button Sign Detail

VISORS AND LOUVERS

404.1100(SH1) Visors for 8" Signal
404.1100(SH2) Louvers and Visors for 12" Signal
404.1100(SH3) Geometrically Programmed Louver
404.1101 Backplate and Signal Head Assembly

SIGNAL HARDWARE

404.1200 Miscellaneous Signal Mounting Hardware
404.1201 Pole Plate Details
404.1202 Miscellaneous Signal Mounting Hardware
404.1203 Elevator Plumbizer
404.1204 Pole Plate with Wire Guide Details
404.1205 4 Way Center Hub
404.1206 Standard Malleable Pipe Hardware -- 1 ½" IPS
404.1207 Post Top Mounted Adapter with Terminal Compartment
404.1208 Side Bracket Mounted Adapter with Wire Guide

SECTION 404

TRAFFIC SIGNALS
CONTINUED

DRAWING NUMBER

SIGNAL HARDWARE (CON'T)

404.1210	One Way Mount
404.1211	One Way Mount for 3M Signals
404.1212	One Way Mount Detail

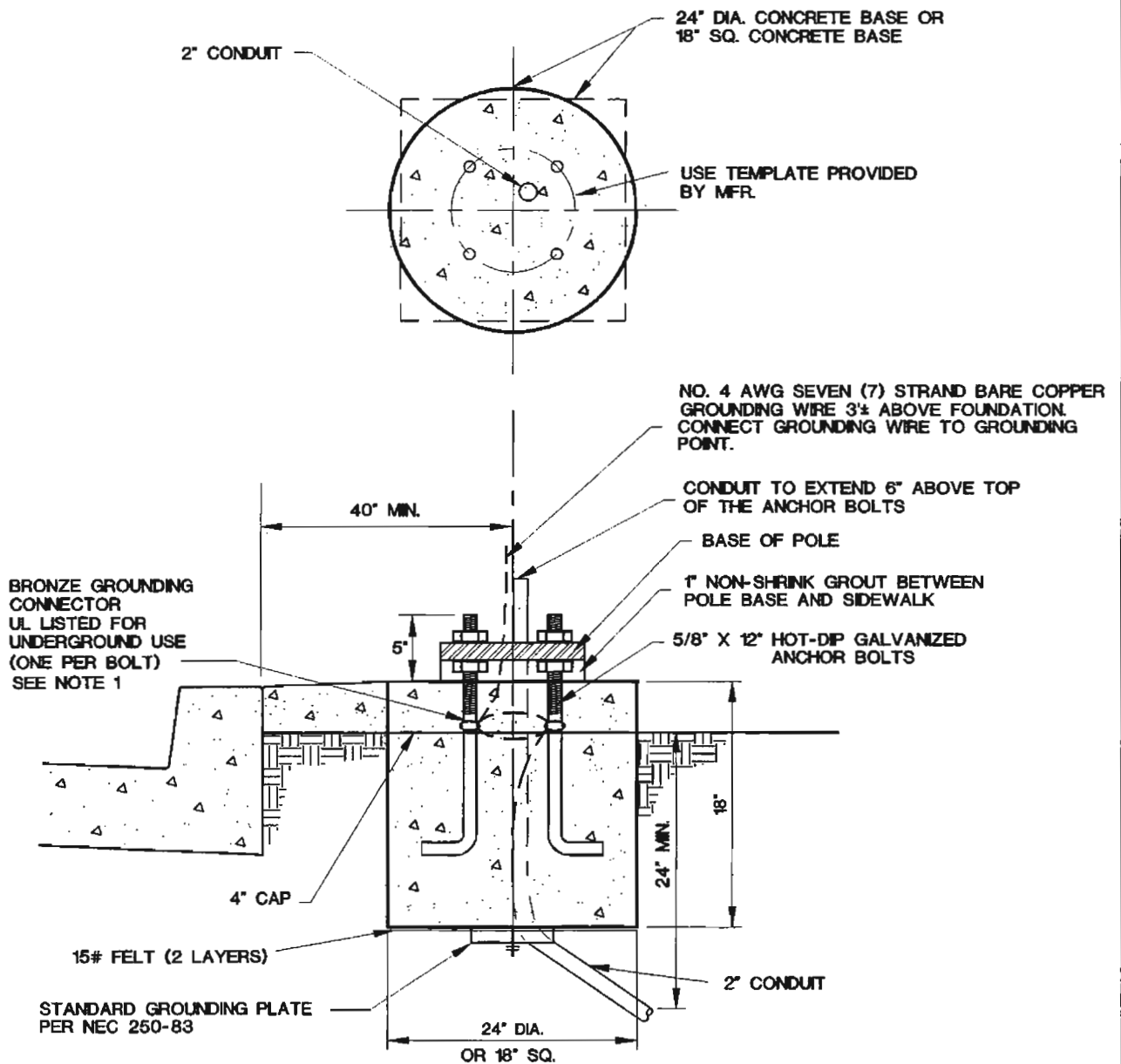
EQUIPMENT ORIENTATION ON SIGNAL POLES

404.1300(SH1)	Pole Location and Signal Mounting at Intersection
404.1300(SH2)	Pole Location and Signal Mounting at Intersection (Center of Return)
404.1301	Pole Location and Signals Mounting on Right Turn Islands
404.1302(SH1)	Future Pole Location Case I (Except City of Las Vegas)
404.1302(SH2)	Future Pole Location Case II
404.1306	Typical Traffic Signal Conduit Layout with Streetlighting

MISCELLANEOUS

404.1410	12" Arrow Lens
404.1412	Single Meter Service Pedestal
404.1413	120/240 VAC Service on Wood Pole Overhead Service
404.1414	Auxiliary Cabinet Equipment Wiring
404.1418	Installation of Conduit into Pull Box from Lip of Gutter Trench
404.1419	Installation of Conduit
404.1422	DELETED - See Uniform Standard Specifications Subsection 623G.03.07

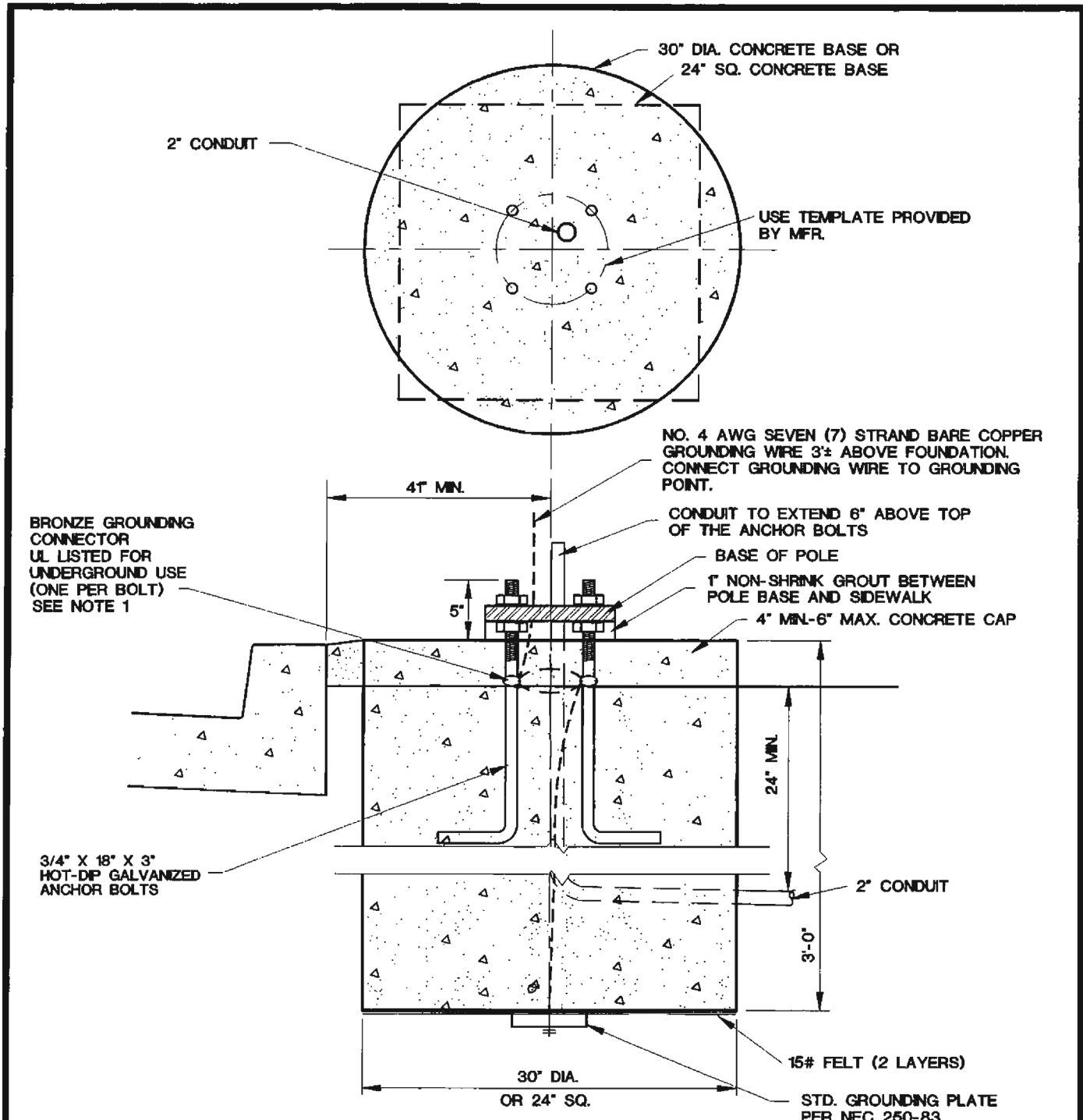
Revised December 2000



NOTE:

1. CONTINUOUS BARE COPPER GROUNDING WIRE SHALL BE LOOPED AROUND ANCHOR BOLTS ONE TIME AND CONNECTED TO EACH ANCHOR BOLT BEFORE CONTINUING DOWN TO THE GROUNDING PLATE.

SPECIFICATION REFERENCE	UNIFORM STANDARD DRAWINGS CLARK COUNTY AREA		
623G.03.06 FOUNDATION	TYPE "A" FOUNDATION		
623T.02.02 ANCHOR BOLT			
	DATE 9-14-00	DWG. NO. 404.201	SHEET 1 OF 1



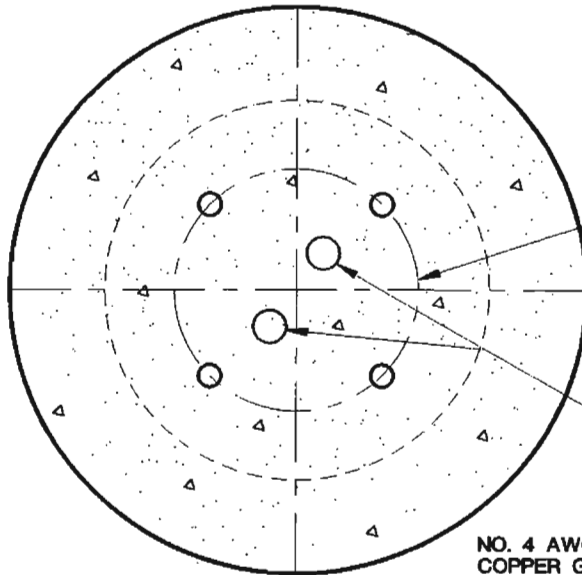
NOTE:

- 1. CONTINUOUS BARE COPPER GROUNDING WIRE SHALL BE LOOPED AROUND ANCHOR BOLTS ONE TIME AND CONNECTED TO EACH ANCHOR BOLT BEFORE CONTINUING DOWN TO THE GROUNDING PLATE.

SPECIFICATION REFERENCE		UNIFORM STANDARD DRAWINGS CLARK COUNTY AREA		
623G.03.06	FOUNDATION	TYPE "C" FOUNDATION		
623T.02.02	ANCHOR BOLT			
		DATE 9-14-00	DWG. NO. 404.203	SHEET 1 OF 1

NOTES:

1. ANCHOR BOLTS SHALL BE HOT-DIP GALVANIZED STEEL WITH NUT AND WASHER.
2. CONTINUOUS BARE COPPER GROUNDING WIRE SHALL BE LOOPED AROUND ANCHOR BOLTS ONE TIME AND CONNECTED TO EACH ANCHOR BOLT BEFORE CONTINUING DOWN TO THE GROUNDING PLATE.



USE TEMPLATE PROVIDED BY MFR.

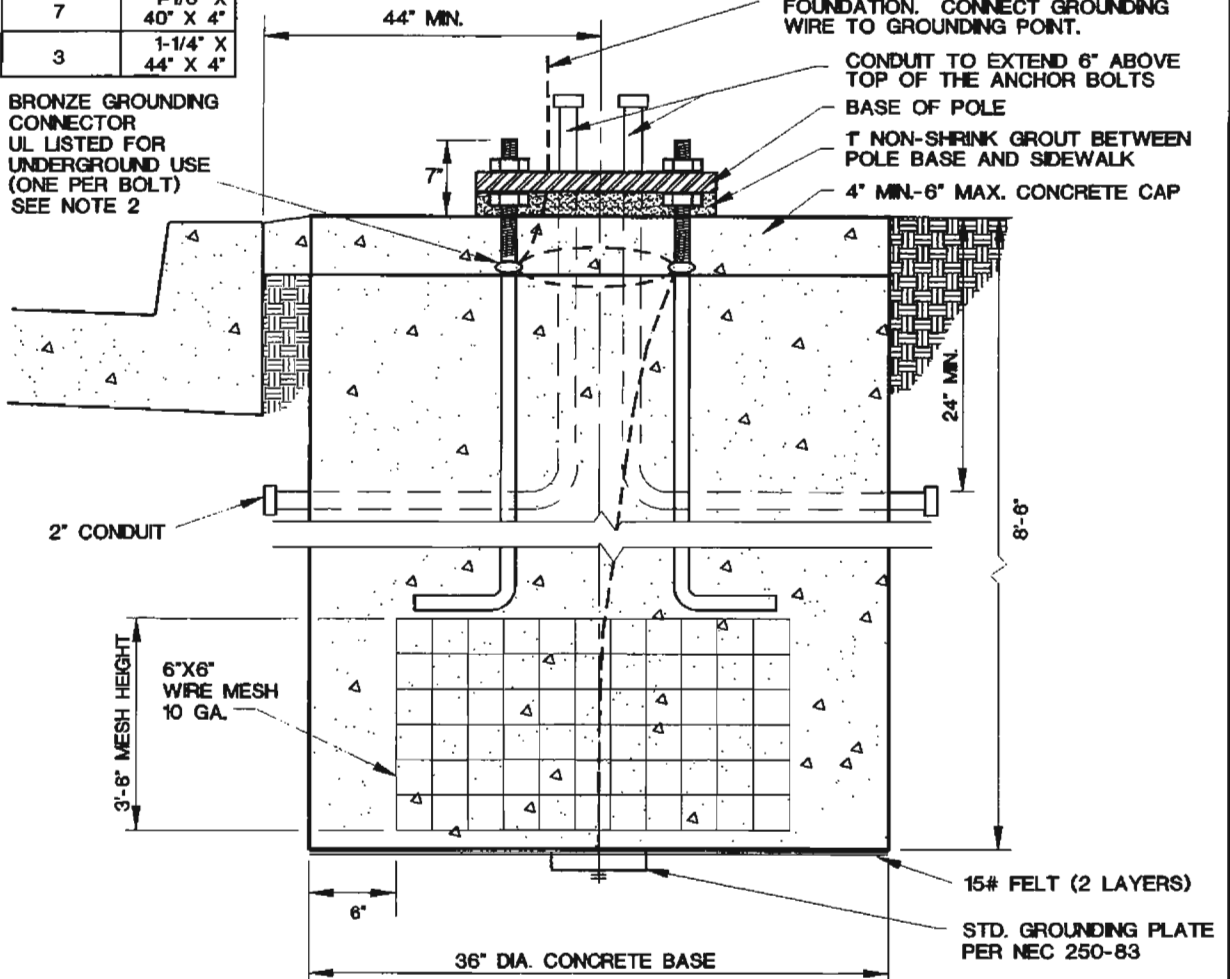
2" CONDUIT

ANCHOR BOLTS	
POLE GA.	BOLT "E"
11	SEE POLE DRAWING
7	1-1/8" X 40" X 4"
3	1-1/4" X 44" X 4"

NO. 4 AWG SEVEN (7) STRAND BARE COPPER GROUNDING WIRE 3± ABOVE FOUNDATION. CONNECT GROUNDING WIRE TO GROUNDING POINT.

CONDUIT TO EXTEND 6" ABOVE TOP OF THE ANCHOR BOLTS
 BASE OF POLE
 T NON-SHRINK GROUT BETWEEN POLE BASE AND SIDEWALK
 4" MIN-6" MAX. CONCRETE CAP

BRONZE GROUNDING CONNECTOR UL LISTED FOR UNDERGROUND USE (ONE PER BOLT) SEE NOTE 2



SPECIFICATION REFERENCE

623G.03.06 FOUNDATION

**UNIFORM STANDARD DRAWINGS
 CLARK COUNTY AREA**

TYPE "E" FOUNDATION

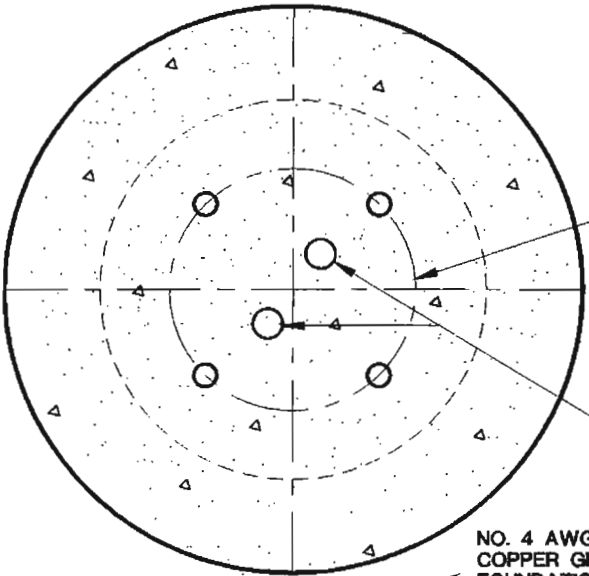
DATE 9-14-00 DWG. NO. 404.205

SHEET 1 OF 1

NOTES:

1. ANCHOR BOLTS SHALL BE HOT-DIP GALVANIZED STEEL WITH NUT AND WASHER.
2. CONTINUOUS BARE COPPER GROUNDING WIRE SHALL BE LOOPED AROUND ANCHOR BOLTS ONE TIME CONNECTED TO EACH ANCHOR BOLT BEFORE CONTINUING DOWN TO THE GROUNDING PLATE.

ANCHOR BOLTS	
POLE GA.	BOLT "E"
11	SEE POLE DRAWING
7	1-1/8" X 40" X 4"
3	1-1/4" X 44" X 4"



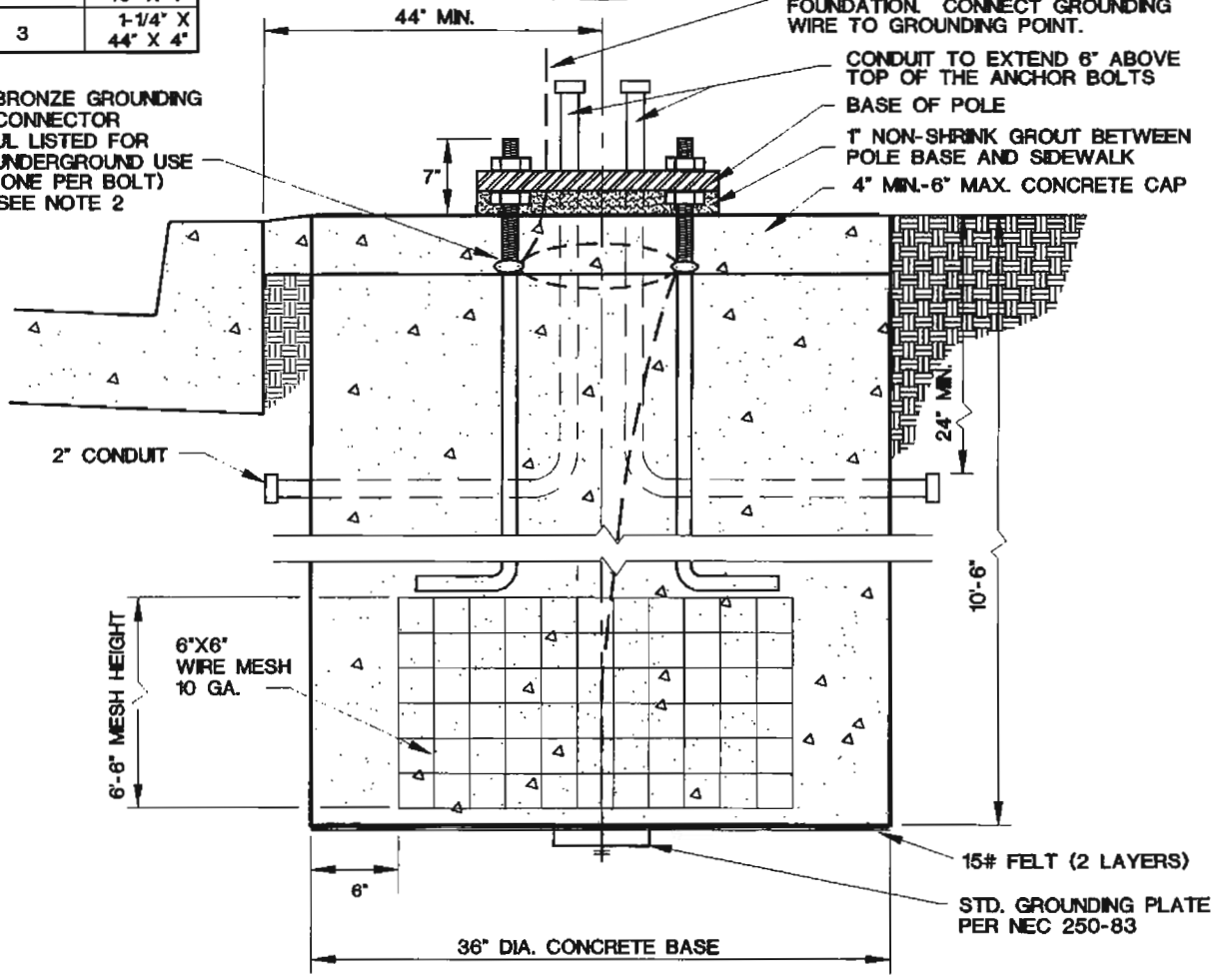
USE TEMPLATE PROVIDED BY MFR.

2" CONDUIT

NO. 4 AWG SEVEN (7) STRAND BARE COPPER GROUNDING WIRE 3± ABOVE FOUNDATION. CONNECT GROUNDING WIRE TO GROUNDING POINT.

BRONZE GROUNDING CONNECTOR UL LISTED FOR UNDERGROUND USE (ONE PER BOLT) SEE NOTE 2

CONDUIT TO EXTEND 6" ABOVE TOP OF THE ANCHOR BOLTS
 BASE OF POLE
 1" NON-SHRINK GROUT BETWEEN POLE BASE AND SIDEWALK
 4" MIN-6" MAX. CONCRETE CAP



SPECIFICATION REFERENCE

623G.03.06 FOUNDATION

**UNIFORM STANDARD DRAWINGS
 CLARK COUNTY AREA**

TYPE "F" FOUNDATION

DATE 9-14-00

DWG. NO. 404.206

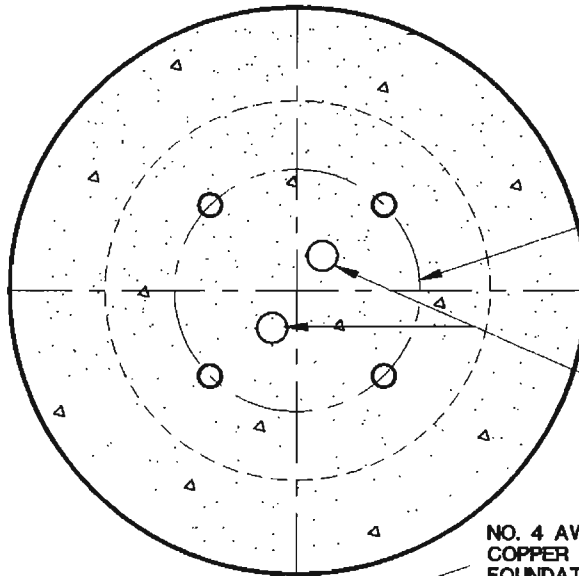
SHEET 1 OF 1

NOTES:

1. ANCHOR BOLTS SHALL BE HOT-DIP GALVANIZED STEEL WITH NUT AND WASHER.
2. CONTINUOUS BARE COPPER GROUNDING WIRE SHALL BE LOOPED AROUND ANCHOR BOLTS ONE TIME CONNECTED TO EACH ANCHOR BOLT BEFORE CONTINUING DOWN TO THE GROUNDING PLATE.

ANCHOR BOLTS	
POLE GA.	BOLT "E"
11	SEE POLE DRAWING
7	1-1/8" X 40" X 4"
3	1-1/4" X 44" X 4"

BRONZE GROUNDING CONNECTOR UL LISTED FOR UNDERGROUND USE (ONE PER BOLT) SEE NOTE 2



USE TEMPLATE PROVIDED BY MFR.

2" CONDUIT

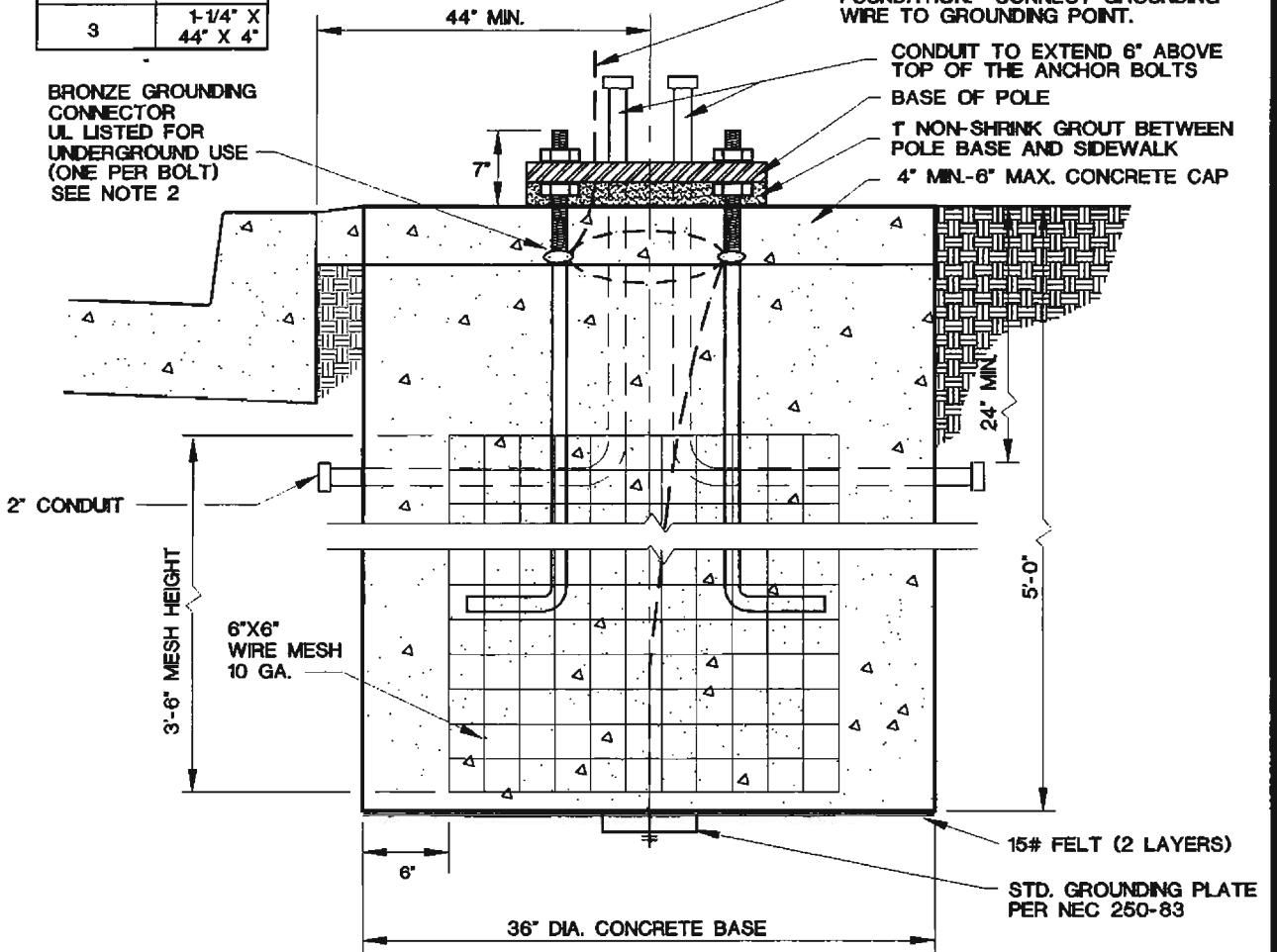
NO. 4 AWG SEVEN (7) STRAND BARE COPPER GROUNDING WIRE 3± ABOVE FOUNDATION. CONNECT GROUNDING WIRE TO GROUNDING POINT.

CONDUIT TO EXTEND 6" ABOVE TOP OF THE ANCHOR BOLTS

BASE OF POLE

1" NON-SHRINK GROUT BETWEEN POLE BASE AND SIDEWALK

4" MIN.-6" MAX. CONCRETE CAP



2" CONDUIT

3'-6" MESH HEIGHT

6"X6" WIRE MESH 10 GA.

5'-0"

15# FELT (2 LAYERS)

STD. GROUNDING PLATE PER NEC 250-83

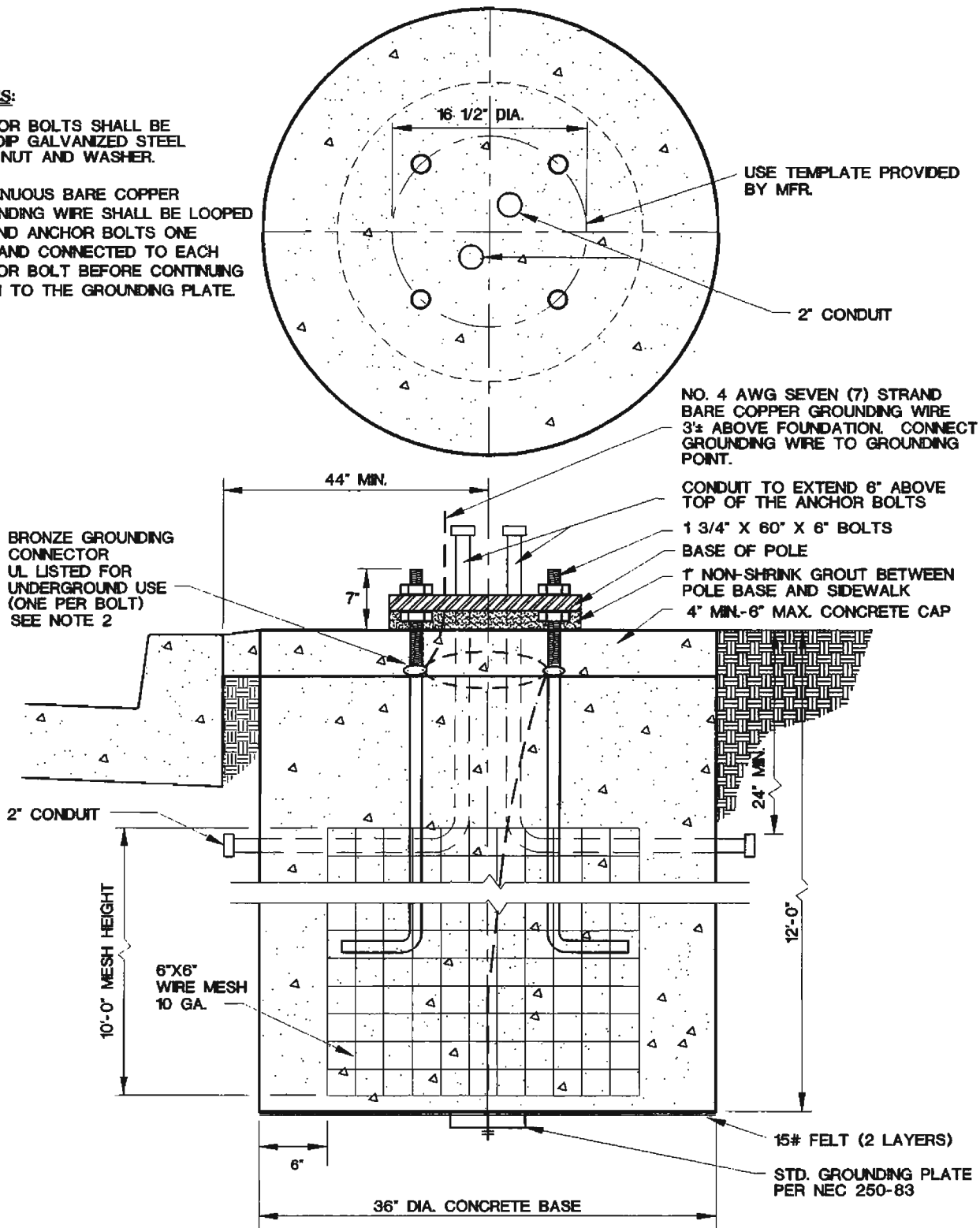
36" DIA. CONCRETE BASE

SPECIFICATION REFERENCE	
623G.03.06	FOUNDATION

UNIFORM STANDARD DRAWINGS CLARK COUNTY AREA		
TYPE "G" FOUNDATION		
DATE 9-14-00	DWG. NO. 404.207	SHEET 1 OF 1

NOTES:

1. ANCHOR BOLTS SHALL BE HOT-DIP GALVANIZED STEEL WITH NUT AND WASHER.
2. CONTINUOUS BARE COPPER GROUNDING WIRE SHALL BE LOOPED AROUND ANCHOR BOLTS ONE TIME AND CONNECTED TO EACH ANCHOR BOLT BEFORE CONTINUING DOWN TO THE GROUNDING PLATE.

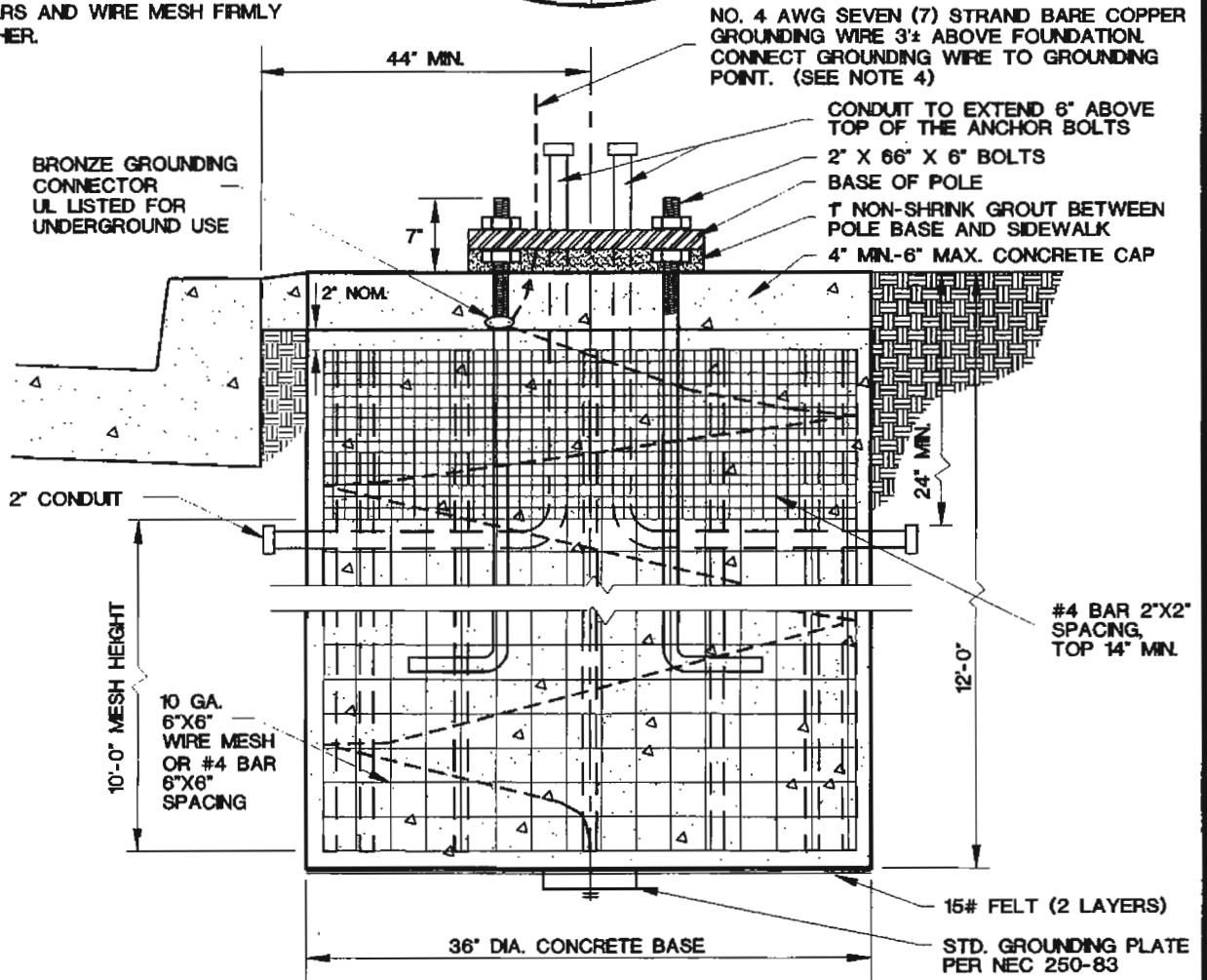
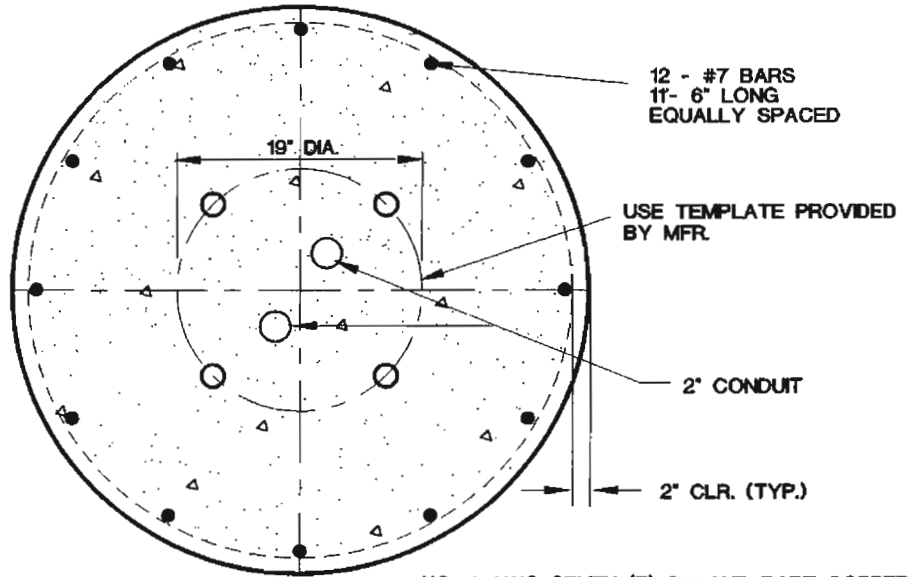


SPECIFICATION REFERENCE	
623G.03.06	FOUNDATION

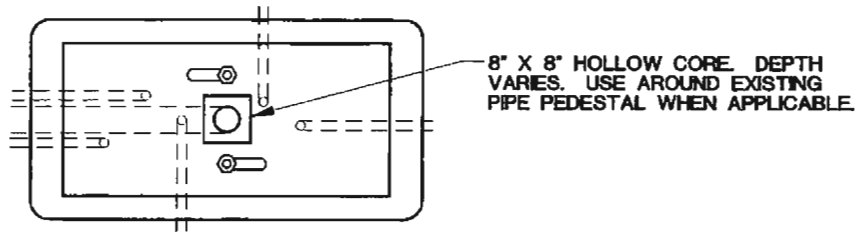
UNIFORM STANDARD DRAWINGS CLARK COUNTY AREA		
TYPE "H" FOUNDATION		
DATE 9-14-00	DWG. NO. 404.208	SHEET 1 OF 1

NOTES:

1. ANCHOR BOLTS SHALL BE HOT-DIP GALVANIZED STEEL WITH NUT AND WASHER.
2. ANCHOR BOLT MINIMUM YIELD STRENGTH $F_y = 50$ KSI.
3. SURROUNDING SOIL MUST HAVE SOIL-BEARING PRESSURE S_1 OF 1500 PSF.
4. WRAP 20' OF #4 AWG BARE COPPER GROUNDING WIRE AROUND ENTIRE CAGE. GROUNDING WIRE SHALL BE CONNECTED TO ONE ANCHOR BOLT NEAR TOP OF FOUNDATION AND CONTINUE DOWN AROUND CAGE AND CONNECT TO GROUNDING PLATE AT BOTTOM OF FOUNDATION.
5. STEEL WIRE SHALL BE USED TO TIE ALL BARS AND WIRE MESH FIRMLY TOGETHER.

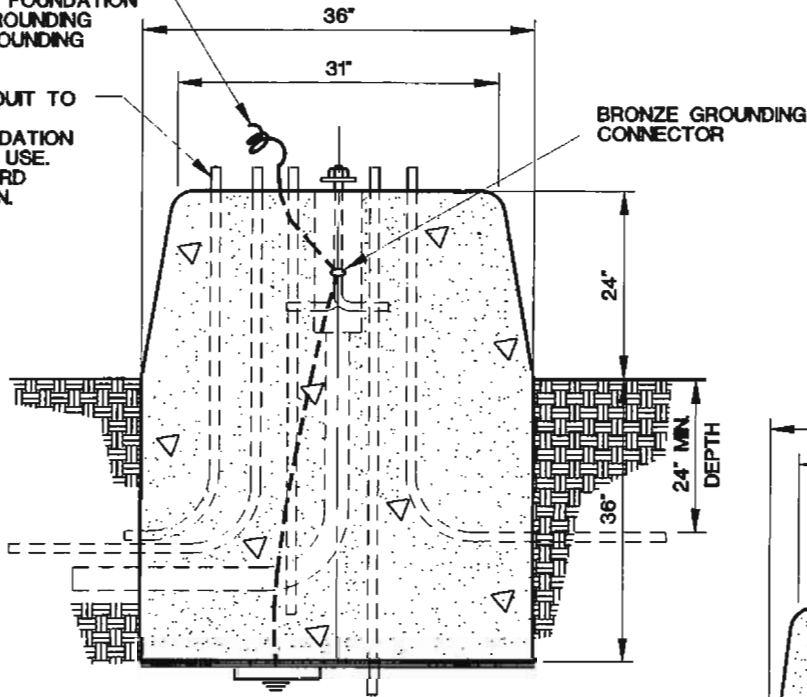


SPECIFICATION REFERENCE	UNIFORM STANDARD DRAWINGS CLARK COUNTY AREA	
623G.03.06 FOUNDATION	TYPE "L" FOUNDATION	
	DATE 9-14-00	DWG. NO. 404.209
	SHEET 1 OF 1	



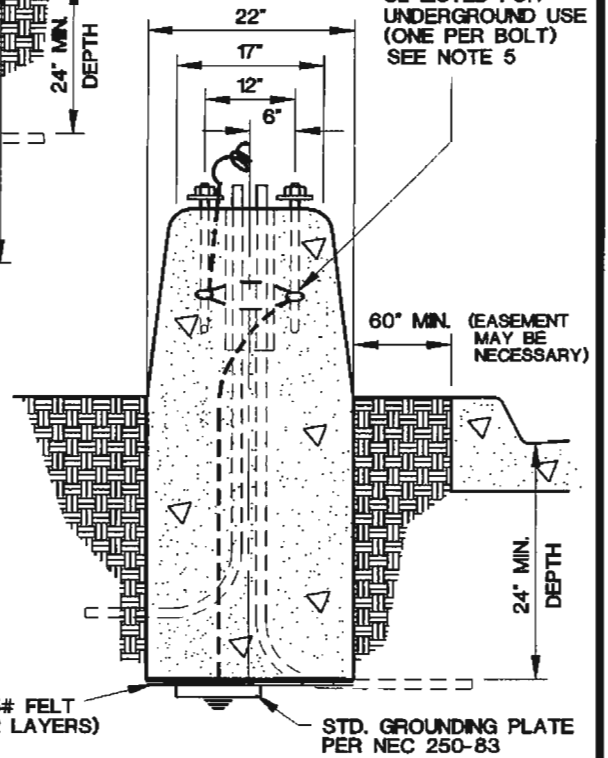
6' OF #4 AWG SEVEN (7) STRAND BARE COPPER GROUNDING WIRE ABOVE FOUNDATION. CONNECT GROUNDING WIRE TO GROUNDING POINT.

2" PVC CONDUIT TO BE ADDED IN EVERY FOUNDATION FOR FUTURE USE. POINT TOWARD INTERSECTION.

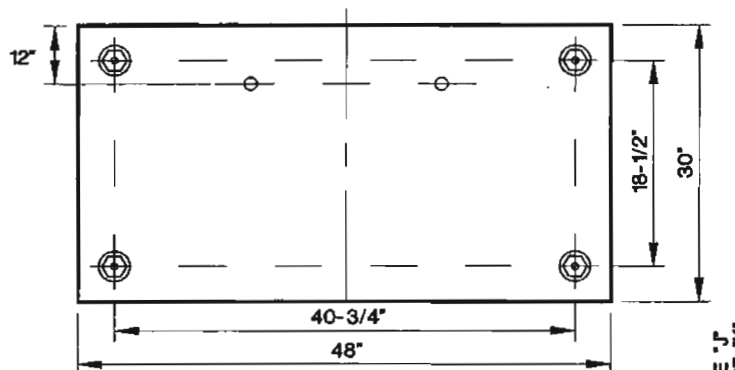


NOTES:

1. FOR CONDUIT SIZE, LOCATION AND QUANTITY, SEE PLANS.
2. ANCHOR BOLTS 3/4" X 18" X 3" SHALL BE HOT-DIP GALVANIZED COMMERCIAL GRADE STEEL WITH NUT AND WASHER.
3. ANCHOR BOLT PROJECTION ABOVE FOUNDATION SHALL BE 3-1/2" MIN., 4-1/2" MAX.
4. CONDUIT PROJECTION ABOVE FOUNDATION SHALL BE 2" MIN., 4" MAX.
5. CONTINUOUS BARE COPPER GROUNDING WIRE SHALL BE LOOPED AROUND ANCHOR BOLTS ONE TIME AND CONNECTED TO EACH ANCHOR BOLT BEFORE CONTINUING DOWN TO THE GROUNDING PLATE.



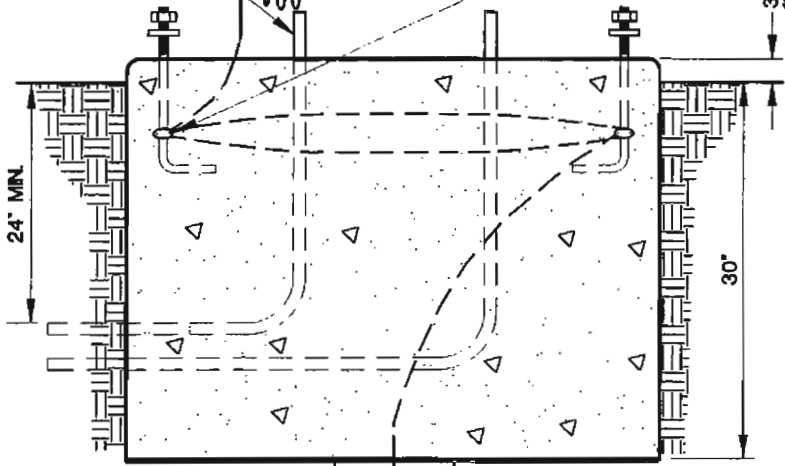
SPECIFICATION REFERENCE	UNIFORM STANDARD DRAWINGS CLARK COUNTY AREA		
	TYPE "1" FOUNDATION		
	DATE 9-14-00	DWG. NO. 404.211	SHEET 1 OF 1



2" PVC COND. TO BE ADDED IN EVERY FDN. FOR FUTURE USE. POINT TOWARDS INTERSECTION.

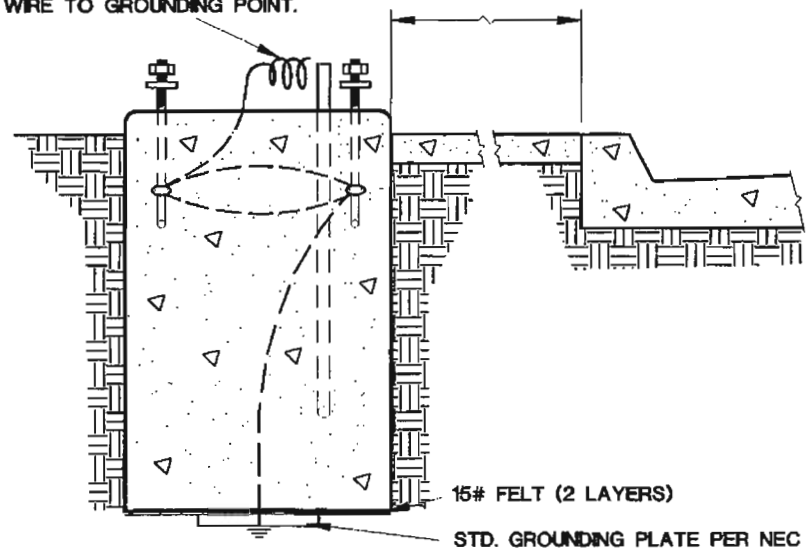
BRONZE GROUNDING CONNECTOR UL LISTED FOR UNDERGROUND USE (ONE PER BOLT) SEE NOTE 6

3" MIN. TYPE "J"
18" MIN. TYPE "K"



6' OF #4 AWG SEVEN (7) STRAND BARE COPPER GROUNDING WIRE ABOVE FDN. CONNECT GROUNDING WIRE TO GROUNDING POINT.

60" MIN. (EASEMENT MAY BE NECESSARY)

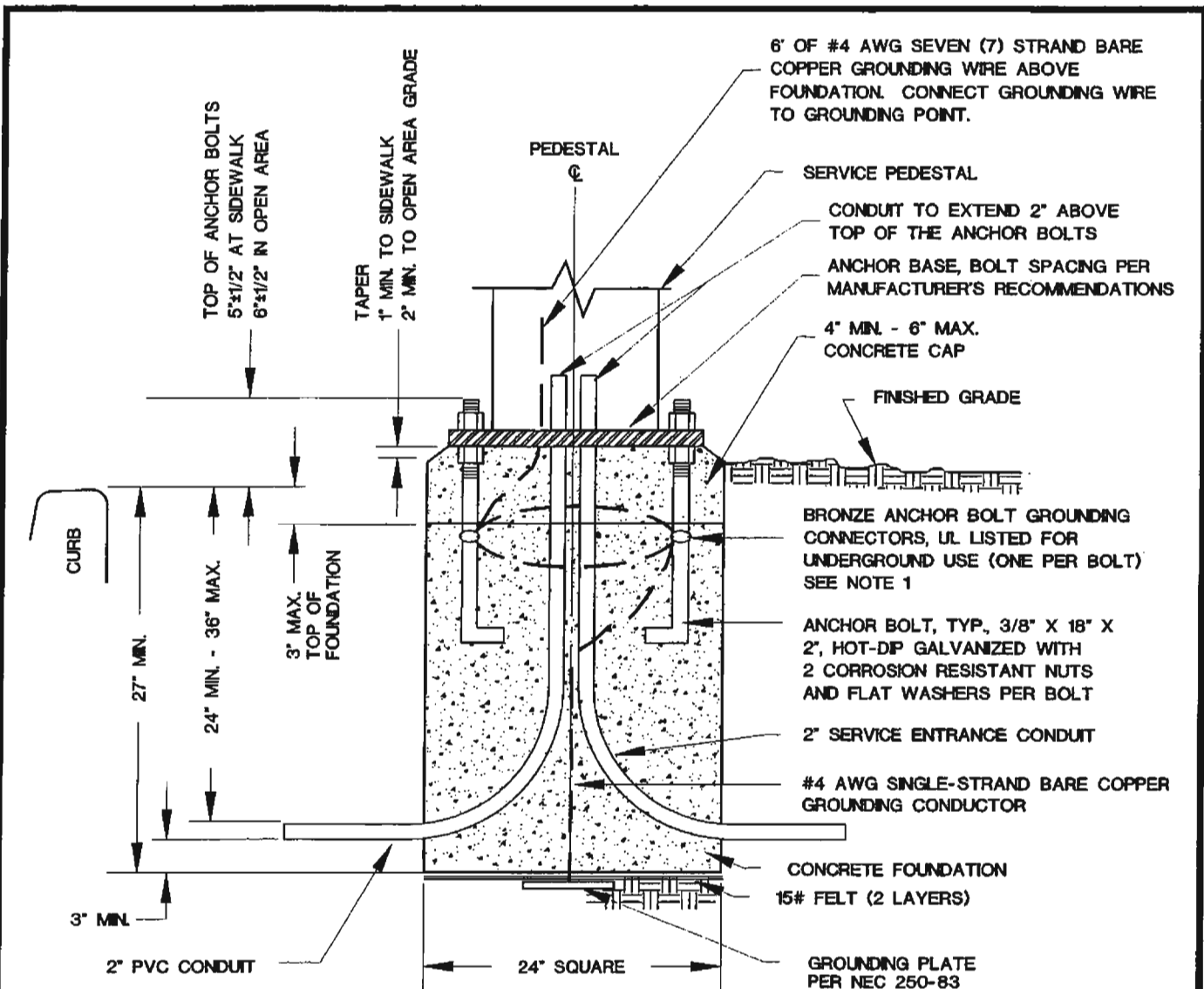


NOTES:

1. FOR CONDUIT SIZE, LOCATION, AND QUANTITY SEE PLANS.
2. 3/4" X 18" X 3" HOT-DIP GALVANIZED ANCHOR BOLTS. LOCATE WITH TEMPLATE.
3. ANCHOR BOLT PROJECTION ABOVE FOUNDATION SHALL BE 3-1/2" MIN., 4-1/2" MAX.
4. CONDUIT PROJECTION ABOVE FOUNDATION SHALL BE 2" MIN., 4" MAX.
5. LOCATION OF FOUNDATION MUST BE APPROVED BY ENGINEER IN FIELD.
6. CONTINUOUS BARE COPPER GROUNDING WIRE SHALL BE LOOPED AROUND ANCHOR BOLTS ONE TIME AND CONNECTED TO EACH ANCHOR BOLT BEFORE CONTINUING DOWN TO THE GROUNDING PLATE.

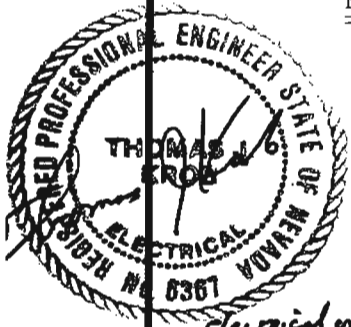
SPECIFICATION REFERENCE	

UNIFORM STANDARD DRAWINGS CLARK COUNTY AREA		
TYPE "J" & "K" FOUNDATIONS		
DATE 9-14-00	DWG. NO. 404.213	SHEET 1 OF 1



NOTES:

1. BARE COPPER GROUNDING CONDUCTOR SHALL BE LOOPED AROUND ANCHOR BOLTS ONE TIME AND CONNECTED TO EACH ANCHOR BOLT BEFORE CONTINUING DOWN TO THE GROUNDING PLATE.
2. CABINET COVERS SHALL BE PARALLEL WITH CURB.
3. IN AREAS WHERE R/W PERMITS, THE CONCRETE BASE SHALL BE PLACED AT THE BACK EDGE OF THE SIDEWALK.
4. CABINET COVERS SHALL OPEN TOWARDS THE STREET WHEN CABINETS ARE LOCATED AT BACK OF WALK. CABINET COVERS SHALL OPEN PARALLEL TO THE SIDEWALK FACING THE DIRECTION OF TRAFFIC WHEN LOCATED WITHIN THE SIDEWALK.



*Electrical only
1/15/01*

SPECIFICATION REFERENCE		UNIFORM STANDARD DRAWINGS CLARK COUNTY AREA		
501	PORTLAND CEMENT CONCRETE			
623	TRAFFIC SIGNALS & STREETLIGHTING	SERVICE PEDESTAL FOUNDATION		
		DATE 9-14-00	DWG. NO. 404.214	SHEET 1 OF 1