

UNIFORM STANDARD DRAWINGS  
CLARK COUNTY AREA  
VOLUME II

**REVISION SET III**  
**1999 Release**

<b>DRAWING NUMBER AND TITLE</b>	<b>SHEET NUMBER(S)</b>	<b><u>NATURE OF CHANGE</u></b>	<b><u>APPROVAL DATE</u></b>
404.400 School Flashing Sign on Pole with Luminaire	1	Revised to provide a second handhole on traffic signal pole, opposite the mast arm.	4/9/98
404.406 Type XX-30'-0" Signal & Luminaire Pole (45' or Less Mast Arm)	1	"	"
404.406 Type XX-30'-0" Signal & Luminaire Pole Details	2	"	"
404.406 Type XX-A-30'-0" Signal & Luminaire Pole (45' or Less Mast Arm)	3	"	"
404.406 Type XX-A-30'-0" Signal & Luminaire Pole Details	4	"	"
404.407 Type XX-20'-0" Signal Pole (45' or Less Mast Arms)	1	"	"
404.407 Type XX-20'-0" (50' Thru 60' Mast Arms) Signal Pole	2	"	"
404.410 30' Luminaire with School Flashing Sign	1	"	"
404.412 School Sign Pole Type XX-30'	1	"	"

<u>DRAWING NUMBER AND TITLE</u>	<u>SHEET NUMBER(S)</u>	<u>NATURE OF CHANGE</u>	<u>APPROVAL DATE</u>
404.416 Type XX Pole with Illuminated Street Name Sign	1	"	4/9/98
404.418 Sign Mounting Illustration	1	"	"
404.420 Block Number Sign	1	"	"
404.1306 Typical Traffic Signal Conduit Layout...	1	Added Note 6 to allow additional 2" conduits and larger pull boxes.	6/11/98
404.1029 Signal Assemblies - B-14T	1	Revised mounting bracket.	10/8/98
404.417 Street Name Sign Internally Illuminated	1	Note 2 revised to comply with Uniform Standard Specifications.	1/14/99
404.1419 Installation of Conduit	1	Revised to include conduit trench and pavement patch details.	5/13/99

Released Nov. 1999

UNIFORM STANDARD DRAWINGS, CLARK COUNTY AREA

TABLE OF CONTENTS

VOLUME II  
SECTION 404  
TRAFFIC SIGNALS

DRAWING NUMBER

**SYMBOLS**

404.001	Standard Symbols for Traffic Signal Drawings (2 sheets)
404.002	Quadrant Detail

**PULL BOXES**

404.110	No. 3 1/2 Pull Box
404.120	No. 5 Pull Box
404.121	Reinforced Plastic Mortar Service Box Assembly #5
404.130	No. 7 Pull Box
404.131	Reinforced Plastic Mortar Service Box Assembly #7
404.139	Steel Pull Boxes
404.140(SH1)	Pull Box Street Cover
404.140(SH2)	Pull Box Cover Bonding Detail
404.141	Pull Box Foundation

**FOUNDATIONS**

404.201	Type "A" Foundation
404.202	Type "B" Foundation
404.203	Type "C" Foundation
404.204	<b>DELETED</b>
404.205	Type "E" Foundation
404.206	Type "F" Foundation
404.207	Type "G" Foundation
404.208	Type "H" Foundation
404.209	Type "L" Foundation
404.211	Type "I" Foundation
404.213	Type "J" and "K" Foundation
404.214	Service Pedestal Foundation

**SECTION 404**

**TRAFFIC SIGNALS**  
**CONTINUED**

**DRAWING NUMBER**

**CABINET**

404.304	Type V Cabinet
404.305	Type VI Cabinet
404.307	Type VIII Cabinet
404.308	Type IX Cabinet
404.309	Flashing Beacon Controller Cabinet
404.310	Wiring Diagram for Flashing Beacon Timer Controlled Operation

**PRIORITY VEHICLE PREEMPTION SYSTEM**

404.320	<b>DELETED</b> - See Uniform Standard Specifications Subsection 623T.02.12
---------	---

**POLES AND POSTS**

<b>404.400(SH1)</b>	<b><i>School Flashing Sign on Pole with Luminaire</i></b>
404.400(SH2)	School Flashing Sign on Type-III Pole
404.401(SH1)	Pedestrian Push Button Post for Special Sign (8'-6")
404.401(SH2)	Pedestrian Push Button Post for 2-½" Post Top Mounting
404.402	Signal Standard Type 1-A, 1-B
404.403	Sign Post with School Sign Mounted (2 sheets)
404.404	<b>DELETED</b>
404.405	Pedestal for Controller Cabinets
<b>404.406</b>	<b><i>Type XX &amp; XX-A -- 30' Signal and Luminaire Pole (6 sheets)</i></b>
<b>404.407(SH1)</b>	<b><i>Type XX -- 20' Signal Pole (45' or Less Mast Arms)</i></b>
<b>404.407(SH2)</b>	<b><i>Type XXA -- 20'-0" (50' through 60' Mast Arms) Signal Pole</i></b>
404.408	<b>DELETED</b>
404.409(SH1)	Base Adaptor Plate for Type "H" Foundation
404.409(SH2)	Base Adaptor Plate for Type "L" Foundation
<b>404.410</b>	<b><i>30' Luminaire with School Flashing Sign</i></b>
404.411	School Sign Mounted on a Traffic Signal Standard
<b>404.412</b>	<b><i>School Sign Pole Type XX -- 30'</i></b>
404.413	School Sign Pole Type XX -- 20'
404.414	Streetlighting Pole with Illuminated Street Name Sign
404.415	Type III Pole with Illuminated Street Name Sign

**SECTION 404**

**TRAFFIC SIGNALS**

**CONTINUED**

**DRAWING NUMBER**

**POLES AND POSTS (CON'T)**

<b>404.416</b>	<b><i>Type XX Pole with Illuminated Street Name Sign</i></b>
<b>404.417</b>	<b><i>Street Name Sign Internally Illuminated</i></b>
<b>404.418</b>	<b><i>Sign Mounting Illustration</i></b>
<b>404.420</b>	<b><i>Block Number Sign</i></b>

**MAST ARMS AND ASSEMBLIES**

<b>404.500</b>	<b>DELETED</b>
<b>404.501</b>	<b>DELETED</b>
<b>404.502</b>	<b>One Bolt Simplex Arm Attachment Clamp Assembly</b>
<b>404.503</b>	<b>Retrofit Streetlight Mast Arm</b>

**DRILLING DETAILS**

<b>404.600</b>	<b>Pole Drilling Details</b>
<b>404.601</b>	<b>Island Signal Pole Details for 10' Pole</b>

**ISLAND EQUIPMENT**

<b>404.700</b>	<b>Island Signal Location</b>
----------------	-------------------------------

**DETECTORS**

<b>404.800</b>	<b>DELETED - See Uniform Standard Specifications Subsection 623T.02.04</b>
<b>404.801</b>	<b>DELETED - See Uniform Standard Specifications Subsection 623T.02.04</b>
<b>404.810</b>	<b>Sawcut Details for Induction Loops</b>
<b>404.811</b>	<b>Details at Loop Pull Box</b>
<b>404.820</b>	<b>1 Induction Loop for 1 Travel Lane</b>
<b>404.821(SH1)</b>	<b>1 Induction Loop for 2 Travel Lanes</b>
<b>404.821(SH2)</b>	<b>2 Induction Loops for 2 Travel Lanes</b>
<b>404.822(SH1)</b>	<b>1 Induction Loop for 3 Travel Lanes</b>
<b>404.822(SH2)</b>	<b>3 Induction Loops for 3 Travel Lanes</b>
<b>404.823(SH1)</b>	<b>1 Induction Loop for 4 Travel Lanes</b>
<b>404.823(SH2)</b>	<b>4 Induction Loops for 4 Travel Lanes</b>

**SECTION 404**

**TRAFFIC SIGNALS**  
**CONTINUED**

**DRAWING NUMBER**

**DETECTORS (CON'T)**

404.825	3 Induction Loops for 3 Travel Lanes
404.826	Multiple Loop System for Thru Lane
404.827	Multiple Loop System for for Left Turn Pocket
404.828	Type "Quadrapole" Loop Installation
404.829	Wire Diagrams for Multiple Loop Systems for Left Turn Pocket and Thru Lane
404.830	Circular Induction Loops for Travel Lanes
404.851	Pedestrian Push Button Detectors

**BACK PLATES**

404.900	Louvered Backplate for Mast Arm Mounted Signal
404.901	Louvered Backplate for Pole Mounted Signal
404.902	Louvered Backplate for 5 Section Signal Head
404.903	Louvered Backplate for 5 Section Signal Head

**SIGNAL UNITS**

404.1005	Bill of Materials - Signal Assemblies
----------	---------------------------------------

**SIGNAL ASSEMBLIES**

404.1011	Types: A-1, A-2T, A-3
404.1012	Types: A-4T, A-5T
404.1013	Type: A-6T
404.1015	Types: A-8T, A-9T
404.1016	Types: A-10T, A-11T
404.1017	Types: A-12T, A-13T
404.1018	Types: A-14T, A-15T
404.1019	Type: A-16T
404.1020	Type: A-17T

## SECTION 404

### TRAFFIC SIGNALS CONTINUED

#### DRAWING NUMBER

#### **MAST ARM SIGNAL ASSEMBLIES**

404.1022      Types: M-2A, M-3A  
404.1023      Types: M-3, M-2

#### **SIGNAL ASSEMBLIES**

404.1024      Types: B-1T, B-2T, B-3T  
404.1025      Types: B-5T, B-6T  
404.1026      Types: B-7T, B-8T, B-9T  
404.1027      Types: B-10, B-11T  
404.1028      Types: B-12T, B-13T  
**404.1029**      **Type: B-14T**  
404.1030      Protective/Permissive M-5 Signal Heads  
404.1031      Protective/Permissive M-5 Signal Heads, Assemblies and Part List  
                  (3 sheets)  
404.1032      Pedestrian Signal Assemblies W-0T, W-1, W-2T, W-3T, W-1T  
404.1033      **DELETED**  
404.1034      Pedestrian Push Button Sign Detail

#### **VISORS AND LOUVERS**

404.1100(SH1)    Visors for 8" Signal  
404.1100(SH2)    Louvers and Visors for 12" Signal  
404.1100(SH3)    Geometrically Programmed Louver  
404.1101          Backplate and Signal Head Assembly

#### **SIGNAL HARDWARE**

404.1200          Miscellaneous Signal Mounting Hardware  
404.1201          Pole Plate Details  
404.1202          Miscellaneous Signal Mounting Hardware  
404.1203          Elevator Plumbizer  
404.1204          Pole Plate with Wire Guide Details  
404.1205          4 Way Center Hub  
404.1206          Standard Malleable Pipe Hardware -- 1 ½" IPS  
404.1207          Post Top Mounted Adapter with Terminal Compartment  
404.1208          Side Bracket Mounted Adapter with Wire Guide

**SECTION 404**

**TRAFFIC SIGNALS**  
**CONTINUED**

**DRAWING NUMBER**

**SIGNAL HARDWARE (CON'T)**

404.1210 One Way Mount  
404.1211 One Way Mount for 3M Signals  
404.1212 One Way Mount Detail

**EQUIPMENT ORIENTATION ON SIGNAL POLES**

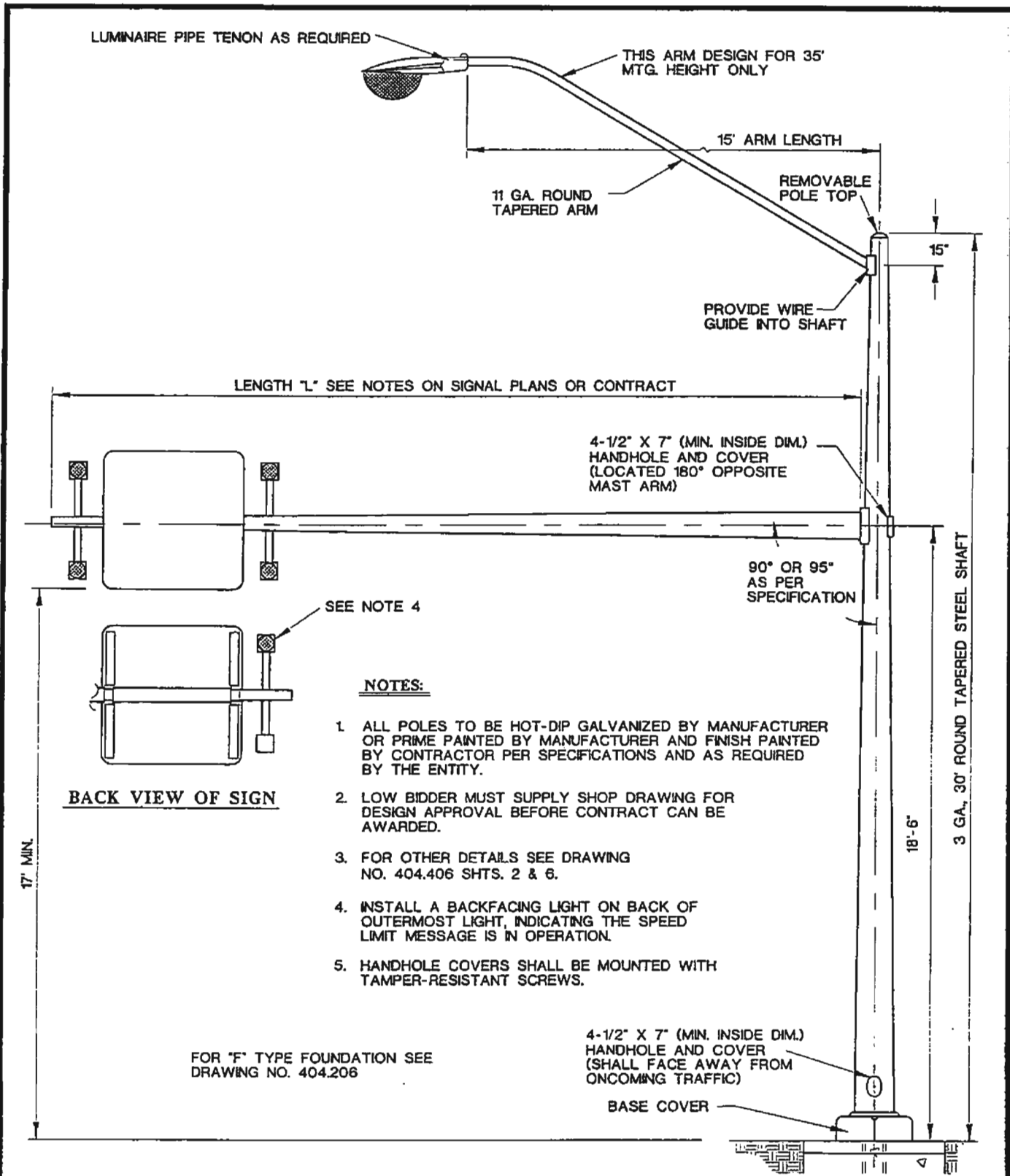
404.1300(SH1) Pole Location and Signal Mounting at Intersection  
404.1300(SH2) Pole Location and Signal Mounting at Intersection (Center  
of Return)  
404.1301 Pole Location and Signals Mounting on Right Turn Islands  
404.1302(SH1) Future Pole Location Case I (Except City of Las Vegas)  
404.1302(SH2) Future Pole Location Case II  
**404.1306** *Typical Traffic Signal Conduit Layout with Streetlighting*

**MISCELLANEOUS**

404.1410 12" Arrow Lens  
404.1412 Single Meter Service Pedestal  
404.1413 120/240 VAC Service on Wood Pole Overhead Service  
404.1414 Auxiliary Cabinet Equipment Wiring  
404.1418 Installation of Conduit into Pull Box from Lip of Gutter Trench  
**404.1419** *Installation of Conduit*  
404.1422 **DELETED** - See Uniform Standard Specifications  
Subsection 623G.03.07

Released November 1999





**NOTES:**

1. ALL POLES TO BE HOT-DIP GALVANIZED BY MANUFACTURER OR PRIME PAINTED BY MANUFACTURER AND FINISH PAINTED BY CONTRACTOR PER SPECIFICATIONS AND AS REQUIRED BY THE ENTITY.
2. LOW BIDDER MUST SUPPLY SHOP DRAWING FOR DESIGN APPROVAL BEFORE CONTRACT CAN BE AWARDED.
3. FOR OTHER DETAILS SEE DRAWING NO. 404.406 SHTS. 2 & 6.
4. INSTALL A BACKFACING LIGHT ON BACK OF OUTERMOST LIGHT, INDICATING THE SPEED LIMIT MESSAGE IS IN OPERATION.
5. HANDHOLE COVERS SHALL BE MOUNTED WITH TAMPER-RESISTANT SCREWS.

**BACK VIEW OF SIGN**

FOR "F" TYPE FOUNDATION SEE DRAWING NO. 404.206

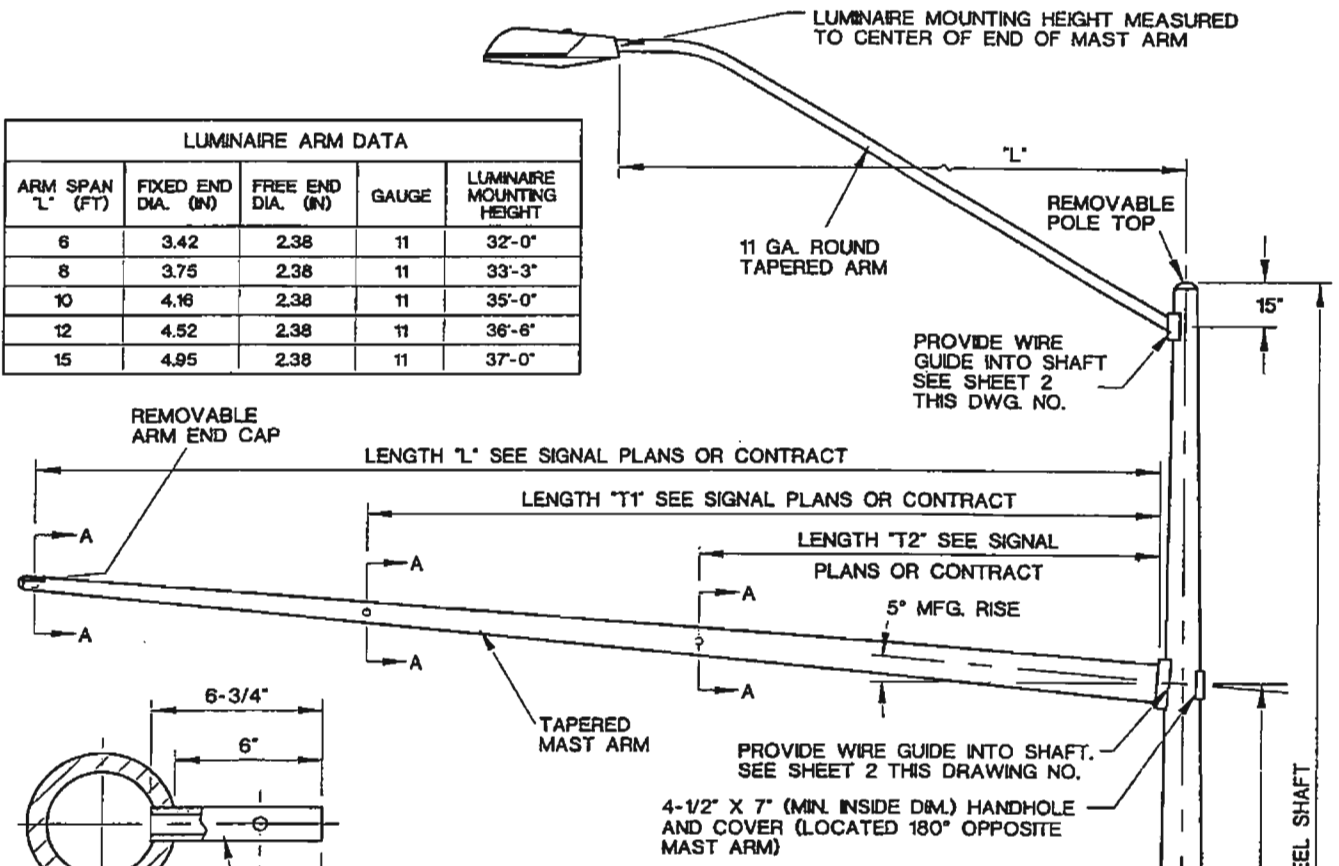
4-1/2" X 7" (MIN. INSIDE DIM.) HANDHOLE AND COVER (SHALL FACE AWAY FROM ONCOMING TRAFFIC)

BASE COVER

<b>SPECIFICATION REFERENCE</b>	<b>UNIFORM STANDARD DRAWINGS CLARK COUNTY AREA</b>		
	<b>SCHOOL FLASHING SIGN ON POLE WITH LUMINAIRE</b>		
	DATE 4-9-98	DWG. NO. 404.400	SHEET 1 OF 2

LUMINAIRE ARM DATA				
ARM SPAN "L" (FT)	FIXED END DIA. (IN)	FREE END DIA. (IN)	GAUGE	LUMINAIRE MOUNTING HEIGHT
6	3.42	2.38	11	32'-0"
8	3.75	2.38	11	33'-3"
10	4.16	2.38	11	35'-0"
12	4.52	2.38	11	36'-6"
15	4.95	2.38	11	37'-0"

LUMINAIRE MOUNTING HEIGHT MEASURED TO CENTER OF END OF MAST ARM



2" SCH. 40 PIPE  
TENON WITH 7/16"  
THRU HOLE FOR  
ELEVATOR PLUMBIZER  
**DETAIL A-A**

**NOTES:**

1. LOW BIDDER MUST SUPPLY SHOP DRAWING FOR DESIGN APPROVAL BEFORE CONTRACT CAN BE AWARDED.
2. ALL POLES TO BE HOT-DIP GALVANIZED BY MANUFACTURER OR PRIME PAINTED BY MANUFACTURER AND FINISH PAINTED BY CONTRACTOR PER SPECIFICATIONS AND AS REQUIRED BY THE ENTITY.
3. HANDHOLE COVERS SHALL BE MOUNTED WITH TAMPER-RESISTANT SCREWS.
4. PEDESTRIAN PUSH BUTTON SHALL NOT BE LOCATED MORE THAN 24" FROM THE BACK OF WALK. IF DISTANCE FROM BACK OF WALK TO PUSH BUTTON IS 20" TO 24", THE BUTTON SHALL BE LOCATED A MAXIMUM OF 44" FROM THE SURFACE OF THE WALK; OTHERWISE THE HEIGHT SHALL BE 48".
5. WHERE SIGNALS AND STANDARDS ARE INSTALLED BELOW OVERHEAD POWER LINES, CLEARANCES SHALL BE PER NATIONAL ELECTRIC SAFETY CODE SECTION 234 REQUIREMENTS. INSTALL STRAIGHT ARM STREETLIGHT ASSEMBLIES WHERE ADDITIONAL CLEARANCE IS REQUIRED.

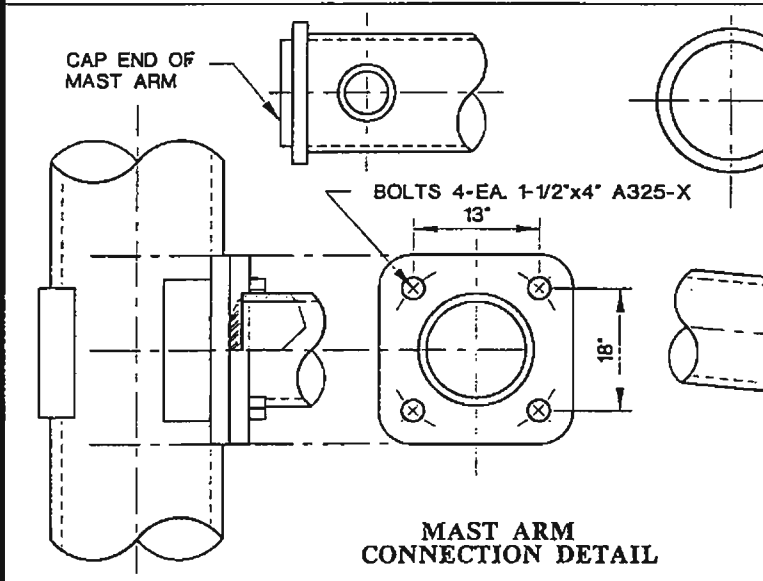
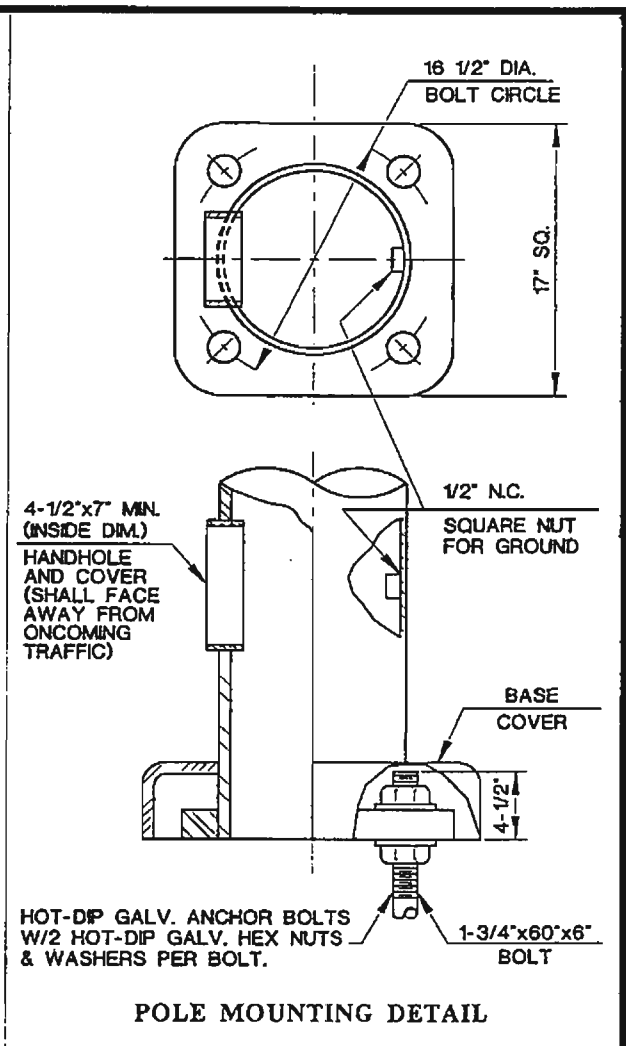
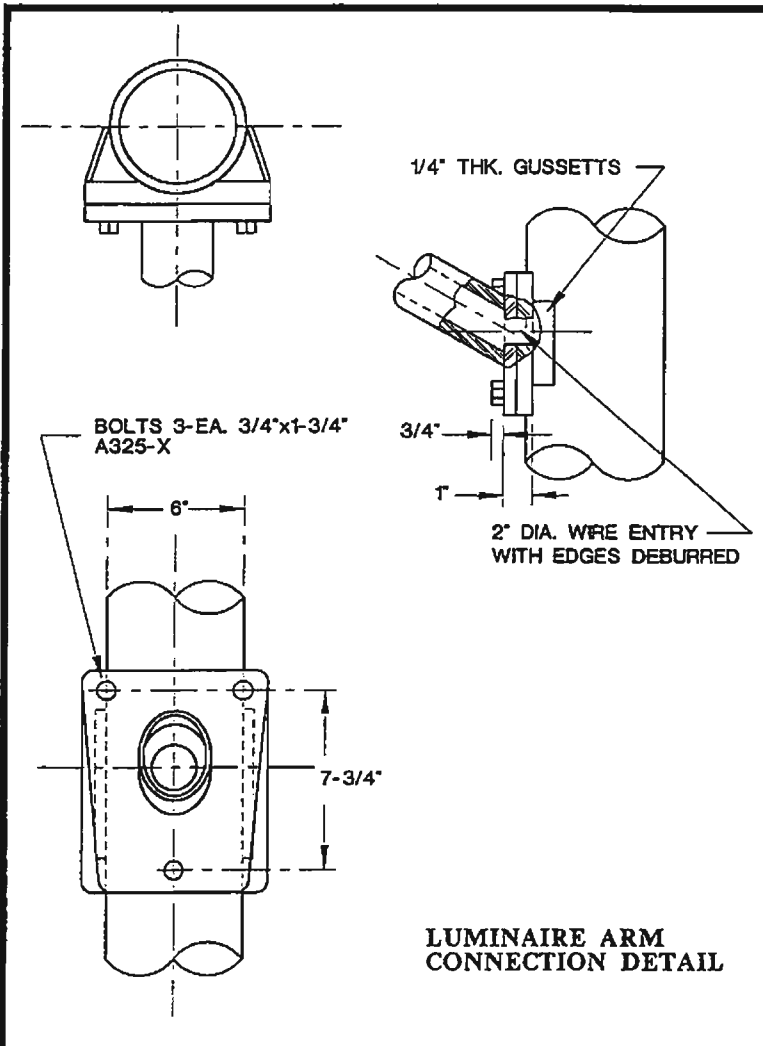
POLES DESIGNED PER SPECIFICATION OF A.A.S.H.T.O., 80 MPH WINDS.  
(SEE DRAWING NO. 404.406 SHEET 5 FOR LOADING INFORMATION)

FOR "H" TYPE FOUNDATION SEE  
DRAWING NO. 404.208

4-1/2" X 7" (MIN. INSIDE DIM.)  
HANDHOLE AND COVER  
(SHALL FACE AWAY FROM  
ONCOMING TRAFFIC)

BASE COVER

SPECIFICATION REFERENCE	UNIFORM STANDARD DRAWINGS CLARK COUNTY AREA		
	TYPE XX-30'-0" SIGNAL & LUMINAIRE POLE (45' OR LESS MAST ARMS)		
	DATE 4-9-98	DWG. NO. 404.406	SHEET 1 OF 6



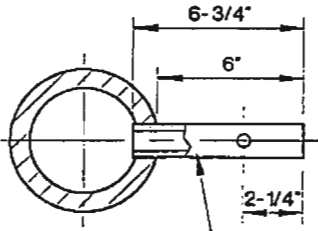
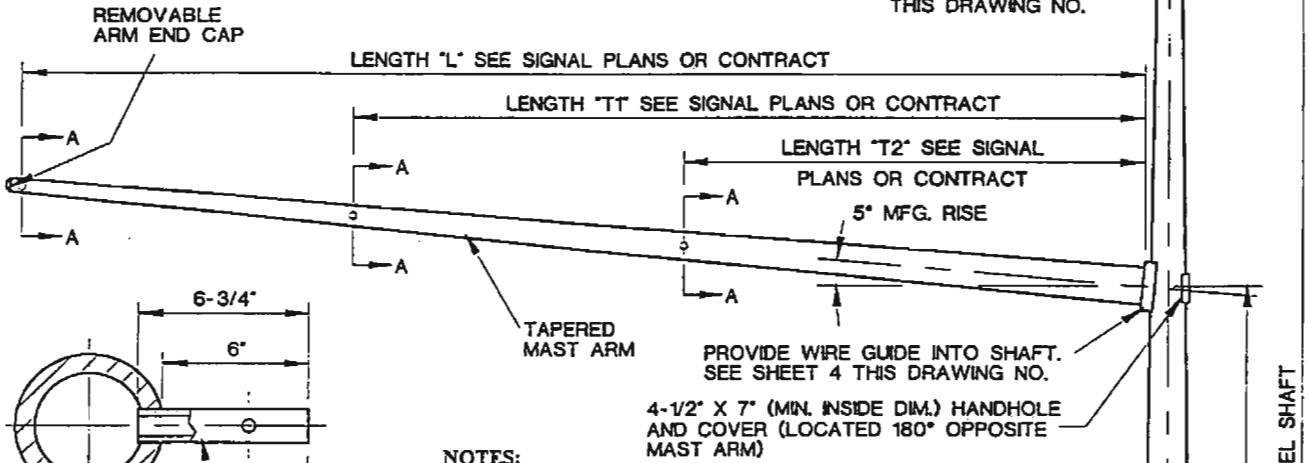
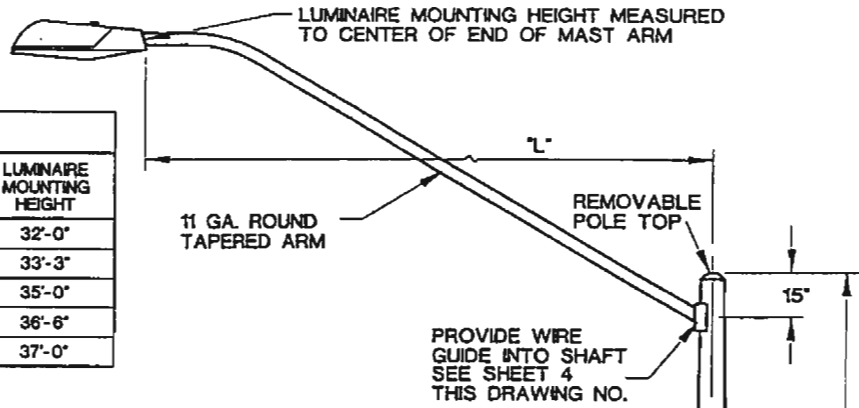
SPECIFICATION REFERENCE	

**UNIFORM STANDARD DRAWINGS  
CLARK COUNTY AREA**

**TYPE XX - 30'-0"  
SIGNAL & LUMINAIRE POLE  
DETAILS**

DATE 4-9-98 DWG. NO. 404.406 SHEET 2 OF 6

LUMINAIRE ARM DATA				
ARM SPAN "L" (FT)	FIXED END DIA. (IN)	FREE END DIA. (IN)	GAUGE	LUMINAIRE MOUNTING HEIGHT
6	3.42	2.38	11	32'-0"
8	3.75	2.38	11	33'-3"
10	4.16	2.38	11	35'-0"
12	4.52	2.38	11	36'-6"
15	4.85	2.38	11	37'-0"



2" SCH. 40 PIPE  
TENON WITH 7/16"  
THRU HOLE FOR  
ELEVATOR PLUMBIZER

**DETAIL A-A**

**NOTES:**

1. LOW BIDDER MUST SUPPLY SHOP DRAWING FOR DESIGN APPROVAL BEFORE CONTRACT CAN BE AWARDED.
2. ALL POLES TO BE HOT-DIP GALVANIZED BY MANUFACTURER OR PRIME PAINTED BY MANUFACTURER AND FINISH PAINTED BY CONTRACTOR PER SPECIFICATIONS AND AS REQUIRED BY THE ENTITY.
3. HANDHOLE COVERS SHALL BE MOUNTED WITH TAMPER-RESISTANT SCREWS.
4. PEDESTRIAN PUSH BUTTON SHALL NOT BE LOCATED MORE THAN 24" FROM THE BACK OF WALK. IF DISTANCE FROM BACK OF WALK TO PUSH BUTTON IS 20' TO 24", THE BUTTON SHALL BE LOCATED A MAXIMUM OF 44" FROM THE SURFACE OF THE WALK; OTHERWISE THE HEIGHT SHALL BE 48".
5. WHERE SIGNALS AND STANDARDS ARE INSTALLED BELOW OVERHEAD POWER LINES, CLEARANCES SHALL BE PER NATIONAL ELECTRIC SAFETY CODE SECTION 234 REQUIREMENTS. INSTALL STRAIGHT ARM STREETLIGHT ASSEMBLIES WHERE ADDITIONAL CLEARANCE IS REQUIRED.

POLES DESIGNED PER SPECIFICATION OF A.A.S.H.T.O., 80 MPH WINDS.  
(SEE DRAWING NO. 404.406 SHEET 5 FOR LOADING INFORMATION)

FOR "L" TYPE FOUNDATION SEE  
DRAWING NO. 404.209

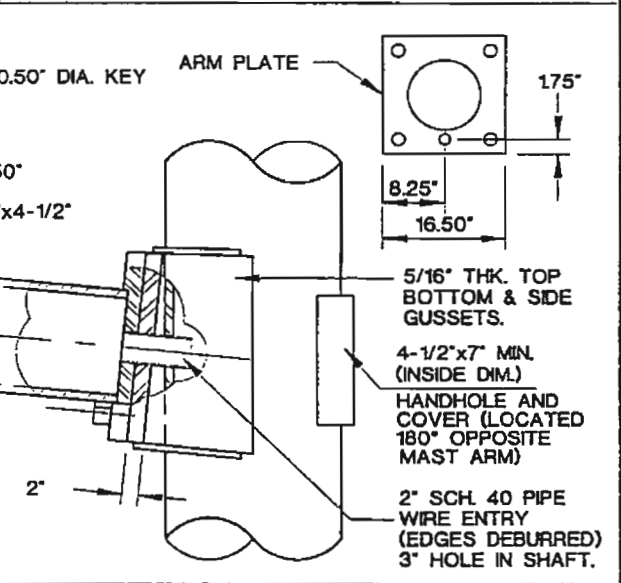
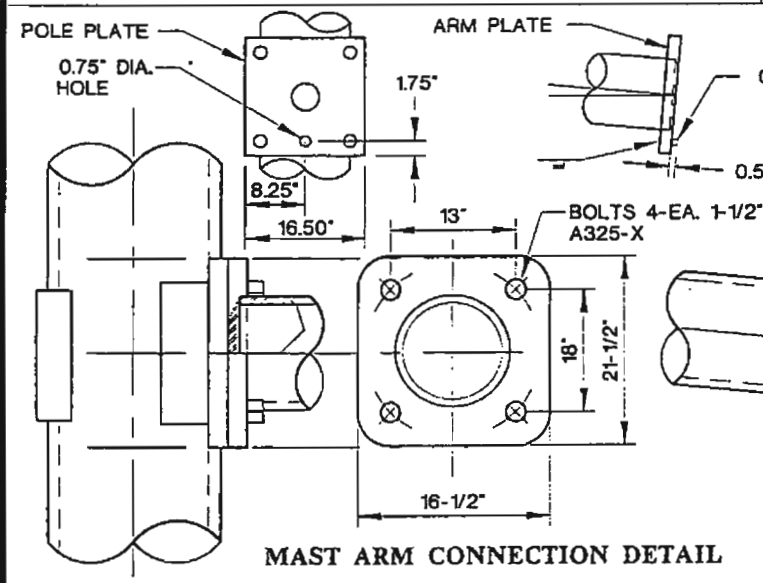
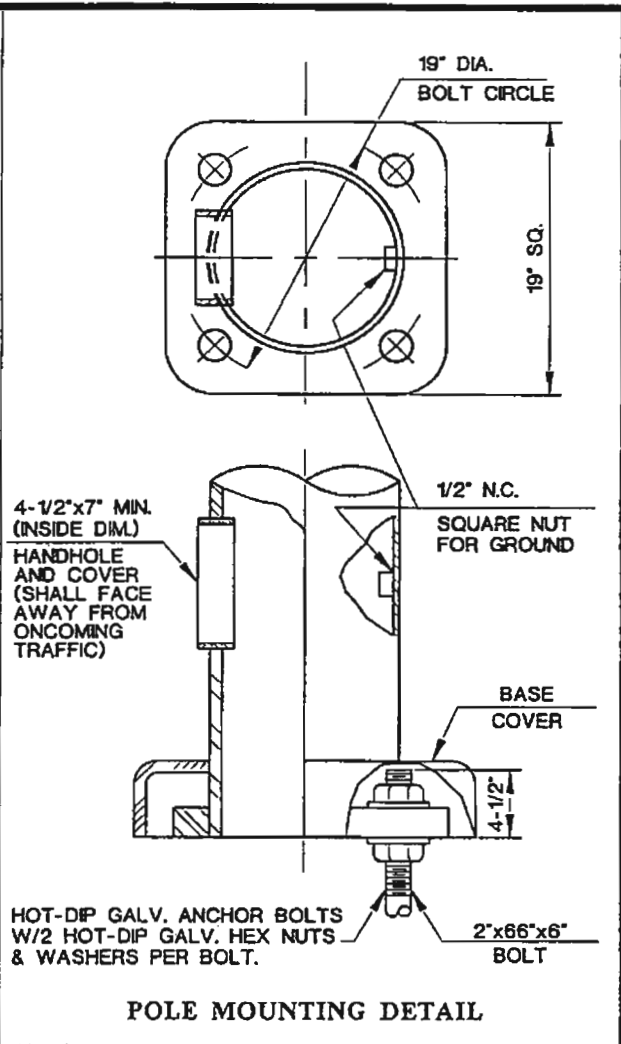
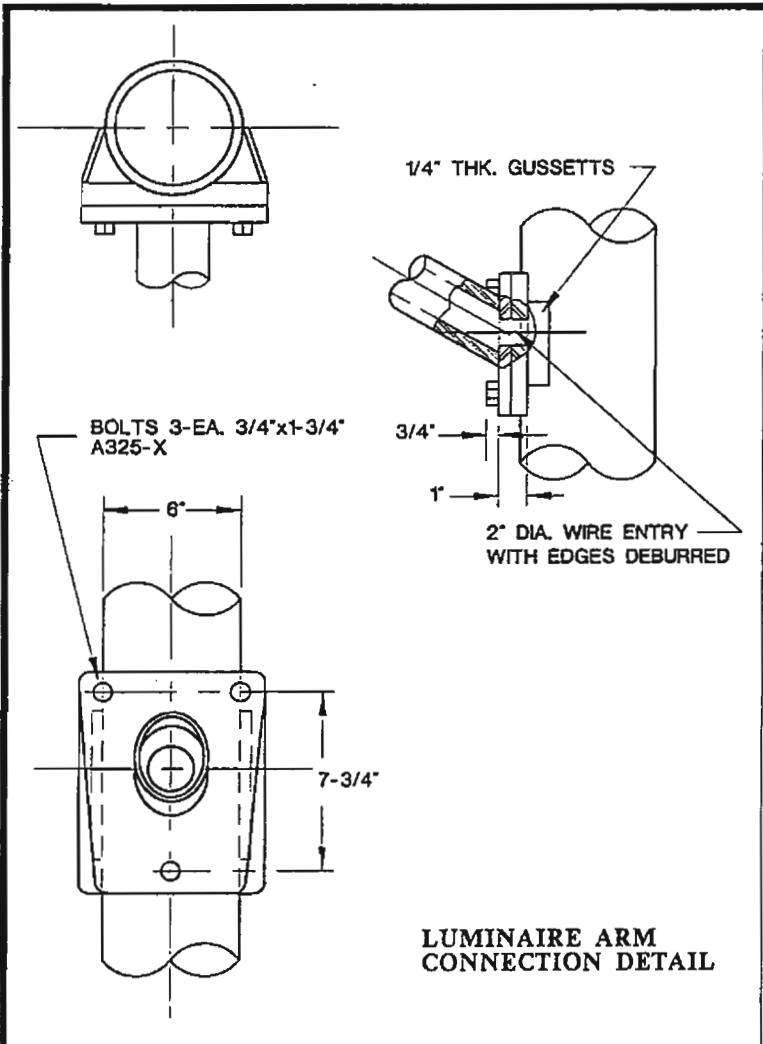
4-1/2" X 7" (MIN. INSIDE DIM.)  
HANDHOLE AND COVER  
(SHALL FACE AWAY FROM  
ONCOMING TRAFFIC)

BASE COVER

**SPECIFICATION REFERENCE**

**UNIFORM STANDARD DRAWINGS  
CLARK COUNTY AREA**

**TYPE XX - A - 30'-0"  
SIGNAL & LUMINAIRE POLE  
(50' THRU 60' MAST ARMS)**

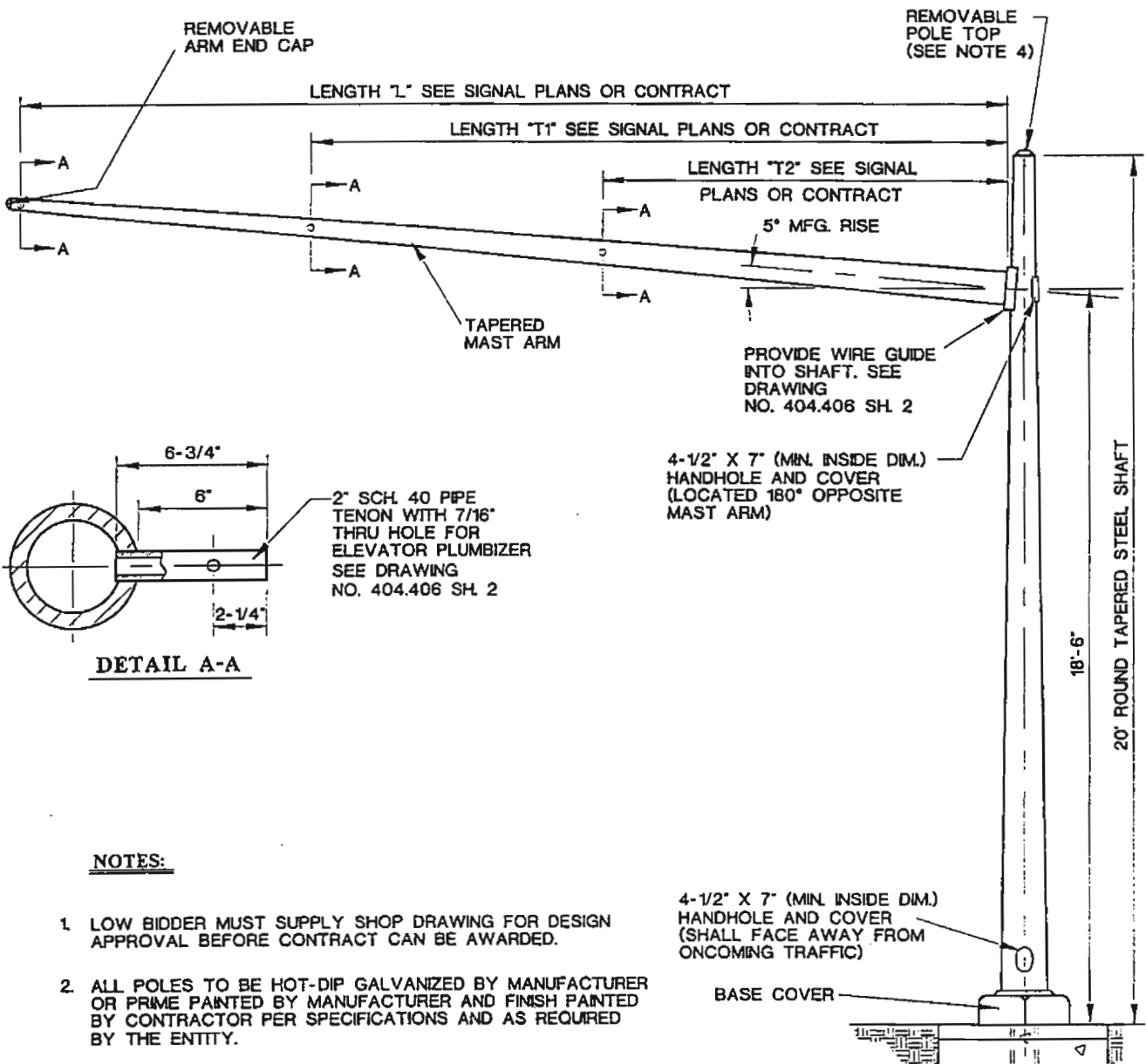


SPECIFICATION REFERENCE	

**UNIFORM STANDARD DRAWINGS  
CLARK COUNTY AREA**

TYPE XX - A - 30'-0"  
(50' THRU 60' MAST ARMS)  
SIGNAL & LUMINAIRE POLE DETAILS

DATE 4-9-98 | DWG. NO. 404.406 | SHEET 4 OF 6



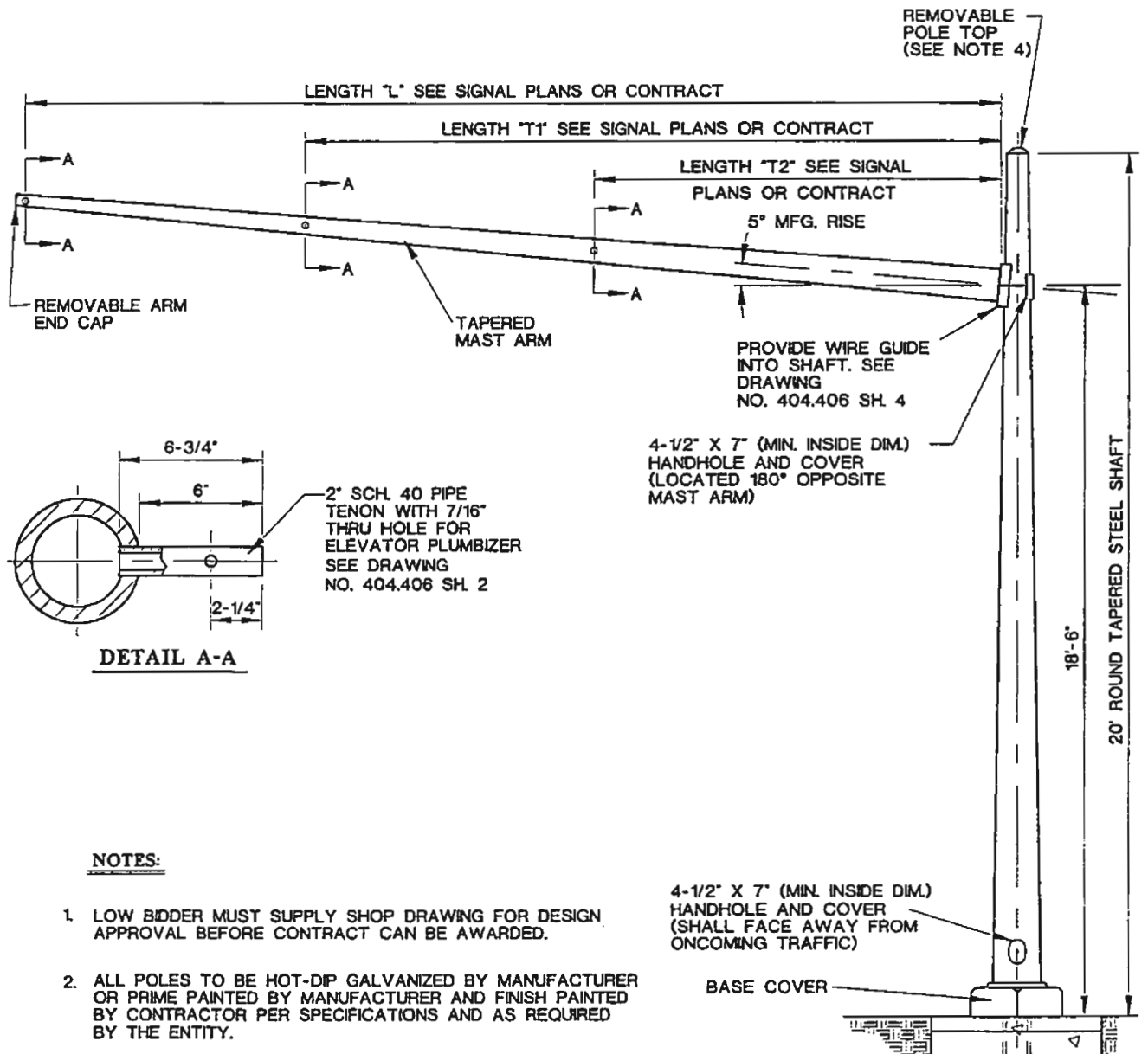
**NOTES:**

1. LOW BIDDER MUST SUPPLY SHOP DRAWING FOR DESIGN APPROVAL BEFORE CONTRACT CAN BE AWARDED.
2. ALL POLES TO BE HOT-DIP GALVANIZED BY MANUFACTURER OR PRIME PAINTED BY MANUFACTURER AND FINISH PAINTED BY CONTRACTOR PER SPECIFICATIONS AND AS REQUIRED BY THE ENTITY.
3. HANDHOLE COVERS SHALL BE MOUNTED WITH TAMPER-RESISTANT SCREWS.
4. PHOTOEYE MAY NEED TO BE AFFIXED TO POLE CAP FOR STREET NAME SIGN ACTIVATION.

POLES DESIGNED PER SPECIFICATION OF A.A.S.H.T.O., 80 MPH WINDS.  
(SEE DRAWING NO. 404.406 SHEET 5 FOR LOADING INFORMATION)

FOR OTHER DETAILS SEE DRAWING NO. 404.406 SHTS. 2 & 6.  
FOR 'H' TYPE FOUNDATION SEE DRAWING NO. 404.208.

SPECIFICATION REFERENCE	UNIFORM STANDARD DRAWINGS CLARK COUNTY AREA	
	TYPE XX 20'-0" SIGNAL POLE (45' OR LESS MAST ARMS)	
	DATE 4-9-98	DWG. NO. 404.407
	SHEET 1 OF 2	



**NOTES:**

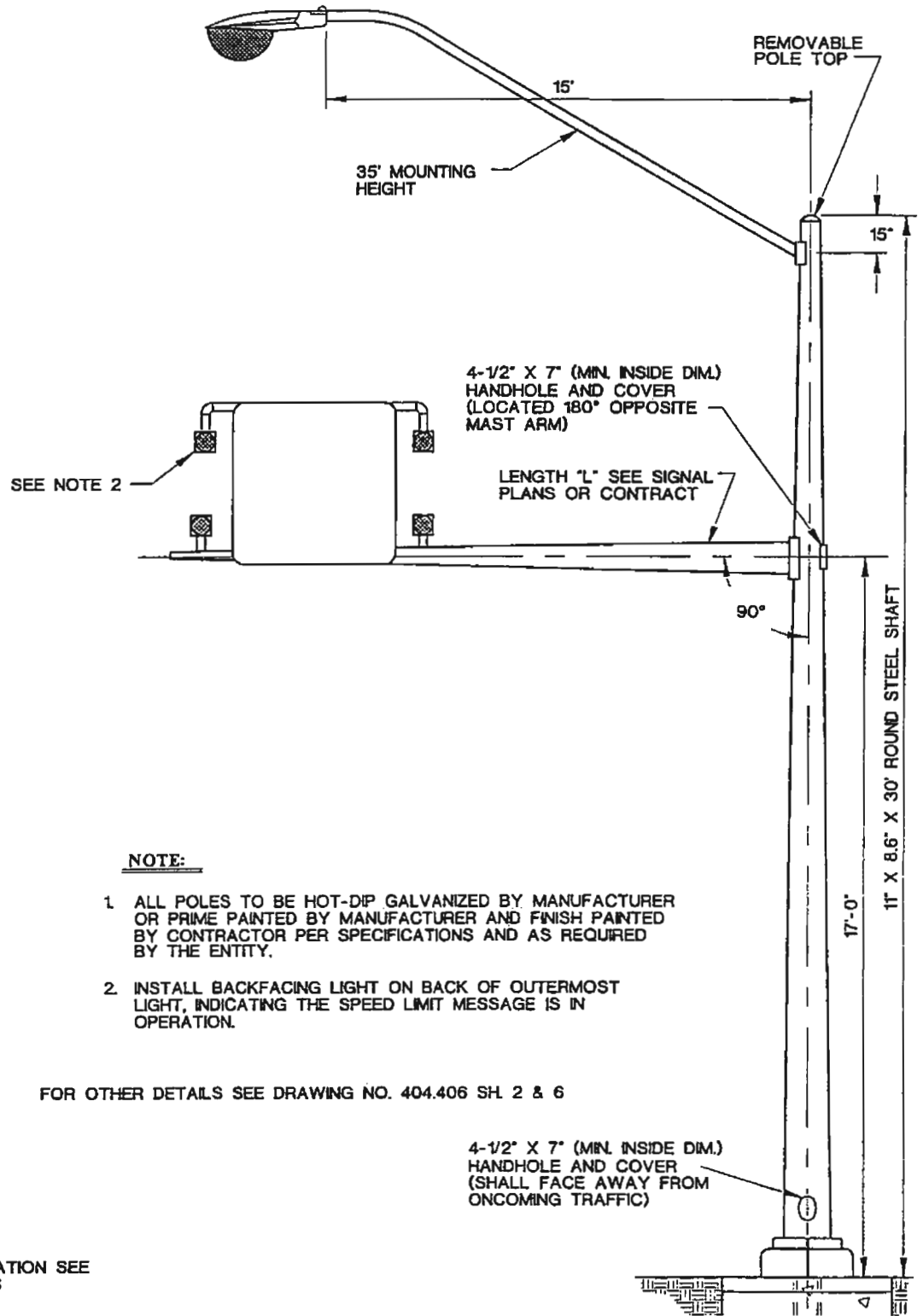
1. LOW BIDDER MUST SUPPLY SHOP DRAWING FOR DESIGN APPROVAL BEFORE CONTRACT CAN BE AWARDED.
2. ALL POLES TO BE HOT-DIP GALVANIZED BY MANUFACTURER OR PRIME PAINTED BY MANUFACTURER AND FINISH PAINTED BY CONTRACTOR PER SPECIFICATIONS AND AS REQUIRED BY THE ENTITY.
3. HANDHOLE COVERS SHALL BE MOUNTED WITH TAMPER-RESISTANT SCREWS.
4. PHOTOEYE MAY NEED TO BE AFFIXED TO POLE CAP FOR STREET NAME SIGN ACTIVATION.

POLES DESIGNED PER SPECIFICATION OF A.A.S.H.T.O., 80 MPH WINDS.  
(SEE DRAWING NO. 404.406 SHEET 5 FOR LOADING INFORMATION)

FOR OTHER DETAILS SEE DRAWING NO. 404.406 SHTS. 4 & 6.

FOR "L" TYPE FOUNDATION SEE DRAWING NO. 404.209.

SPECIFICATION REFERENCE	UNIFORM STANDARD DRAWINGS CLARK COUNTY AREA		
	TYPE XX-A-20'-0" (50' THRU 60' MAST ARMS) SIGNAL POLE		
	DATE 4-9-98	DWG. NO. 404.407	SHEET 2 OF 2



**NOTE:**

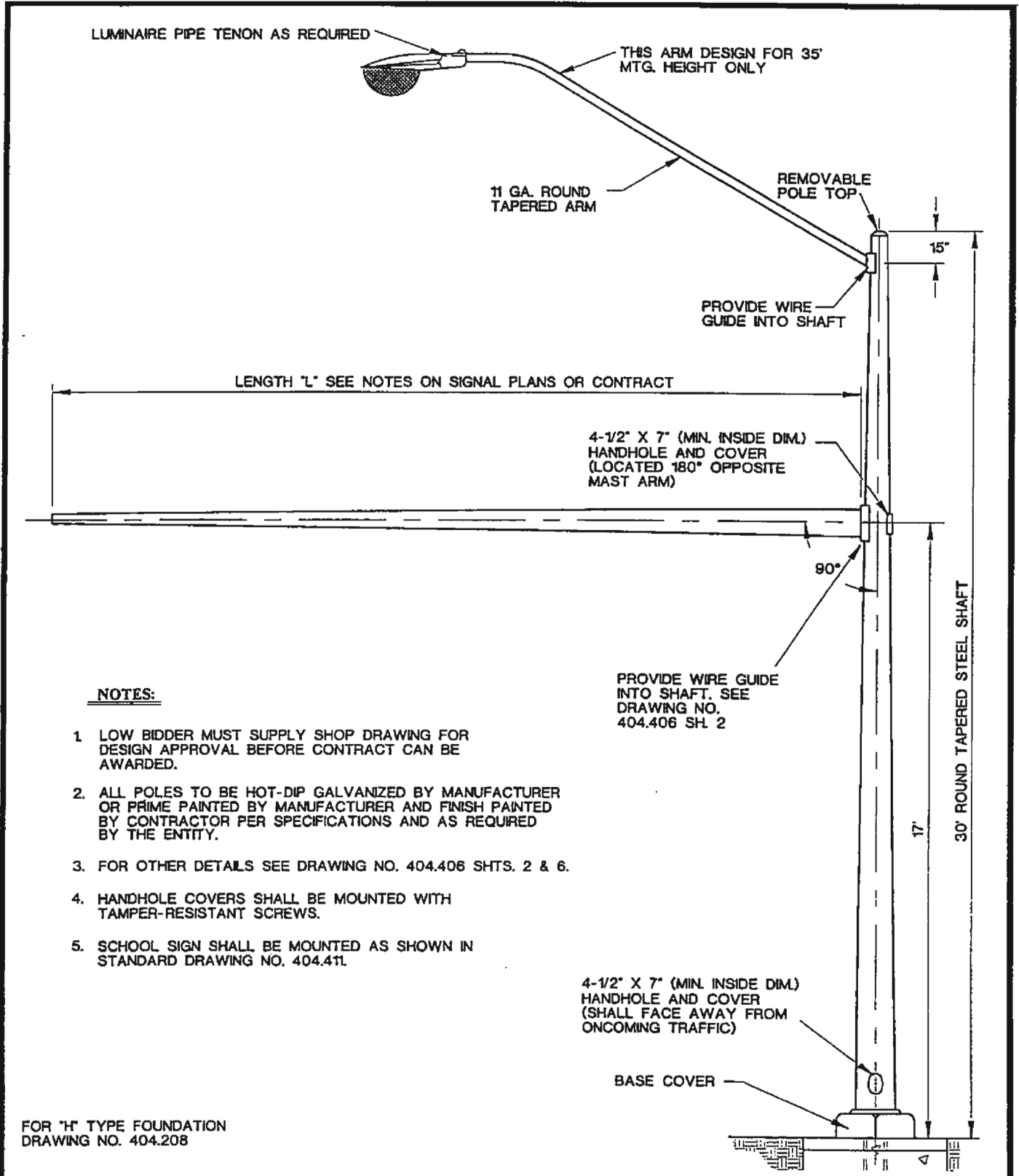
1. ALL POLES TO BE HOT-DIP GALVANIZED BY MANUFACTURER OR PRIME PAINTED BY MANUFACTURER AND FINISH PAINTED BY CONTRACTOR PER SPECIFICATIONS AND AS REQUIRED BY THE ENTITY.
2. INSTALL BACKFACING LIGHT ON BACK OF OUTERMOST LIGHT, INDICATING THE SPEED LIMIT MESSAGE IS IN OPERATION.

FOR OTHER DETAILS SEE DRAWING NO. 404.406 SH. 2 & 6

FOR 'F' TYPE FOUNDATION SEE DRAWING NO. 404.206

SPECIFICATION REFERENCE	UNIFORM STANDARD DRAWINGS CLARK COUNTY AREA	
	30' LUMINAIRE WITH SCHOOL FLASHING SIGN	
	DATE 4-9-98	DWG. NO. 404.410
	SHEET 1 OF 1	

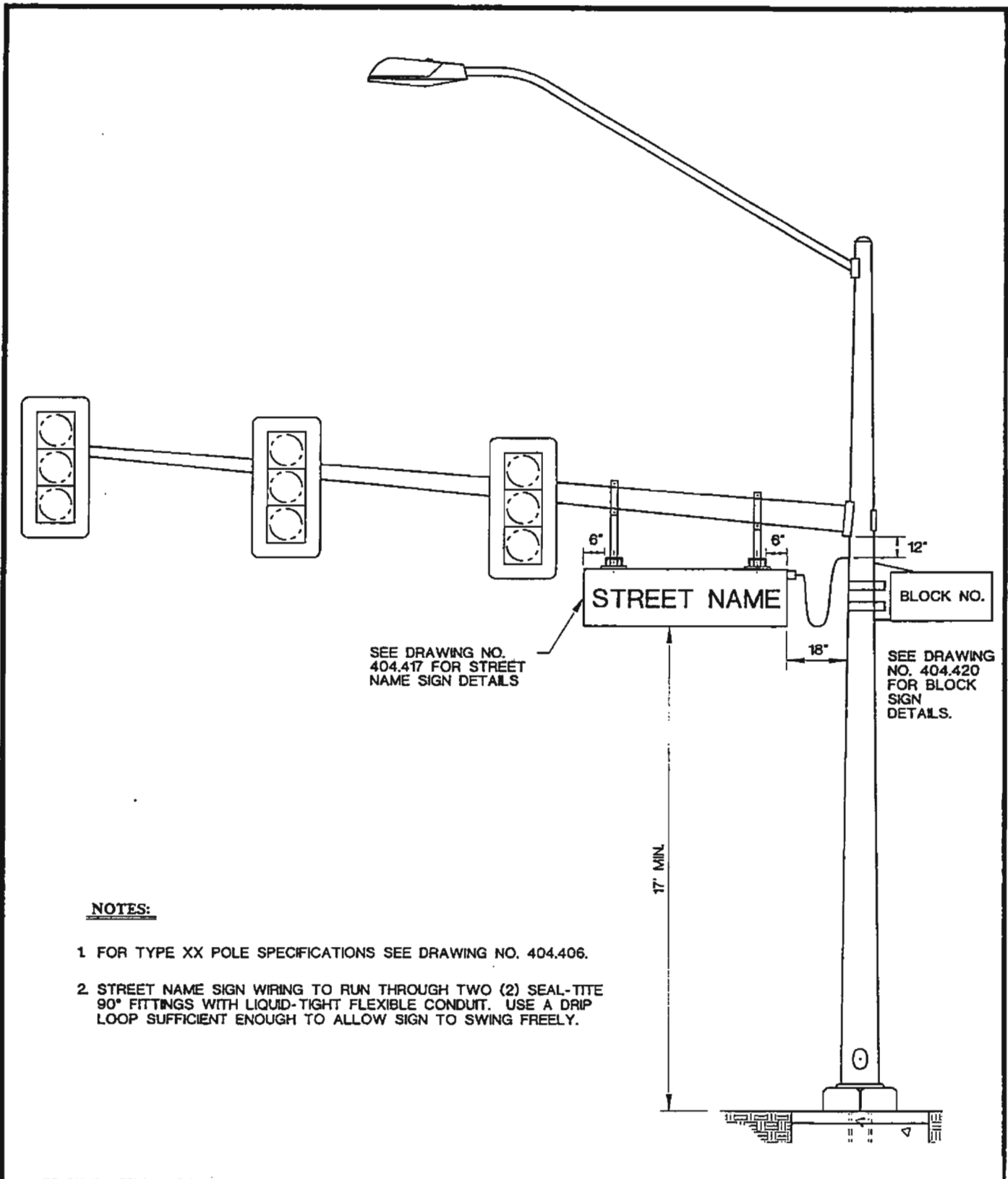




**NOTES:**

1. LOW BIDDER MUST SUPPLY SHOP DRAWING FOR DESIGN APPROVAL BEFORE CONTRACT CAN BE AWARDED.
2. ALL POLES TO BE HOT-DIP GALVANIZED BY MANUFACTURER OR PRIME PAINTED BY MANUFACTURER AND FINISH PAINTED BY CONTRACTOR PER SPECIFICATIONS AND AS REQUIRED BY THE ENTITY.
3. FOR OTHER DETAILS SEE DRAWING NO. 404.406 SHTS. 2 & 6.
4. HANDHOLE COVERS SHALL BE MOUNTED WITH TAMPER-RESISTANT SCREWS.
5. SCHOOL SIGN SHALL BE MOUNTED AS SHOWN IN STANDARD DRAWING NO. 404.411.

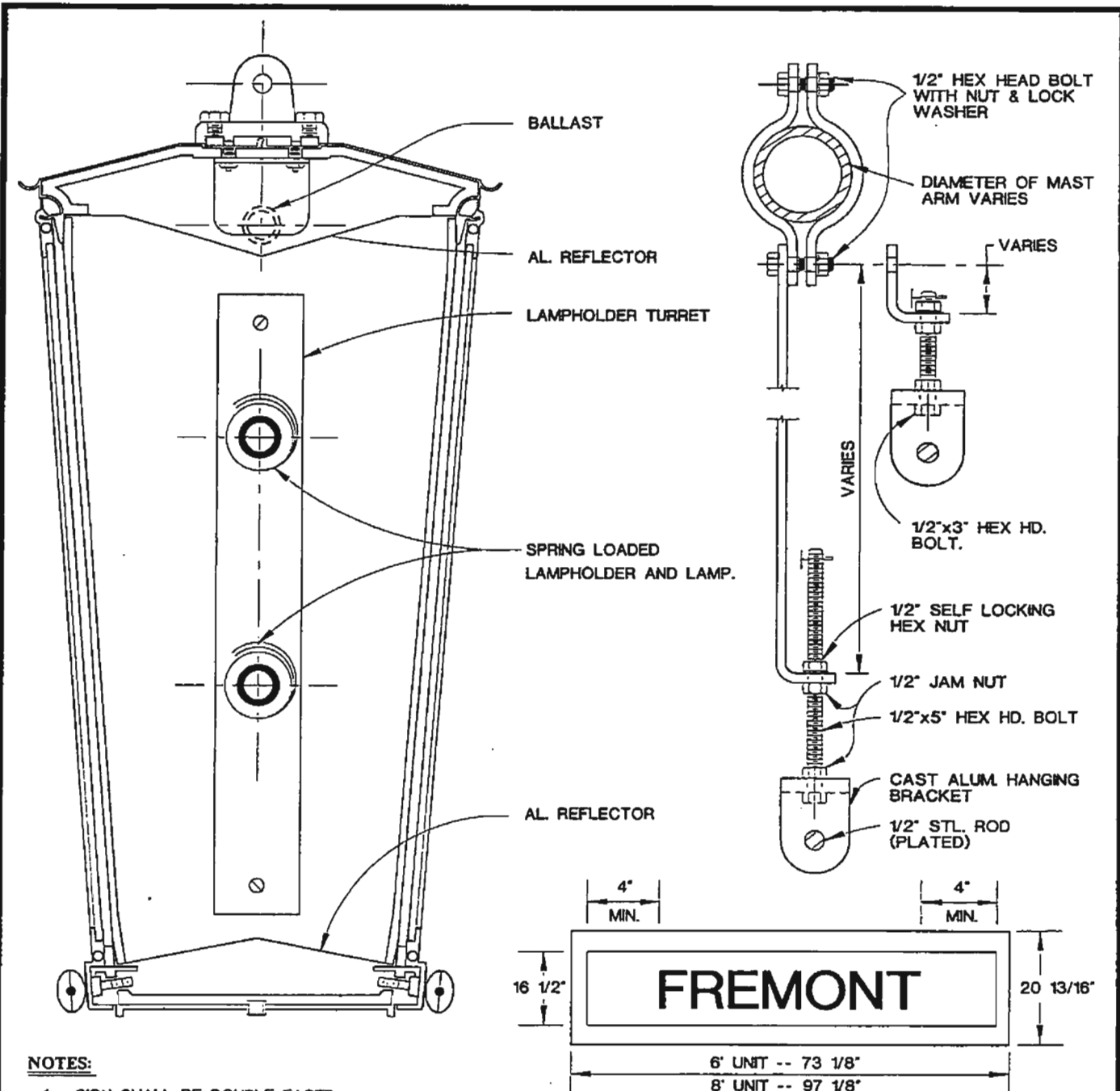
SPECIFICATION REFERENCE	UNIFORM STANDARD DRAWINGS CLARK COUNTY AREA		
	SCHOOL SIGN POLE TYPE XX-30'		
	DATE 4-9-98	DWG. NO. 404.412	SHEET 1 OF 1



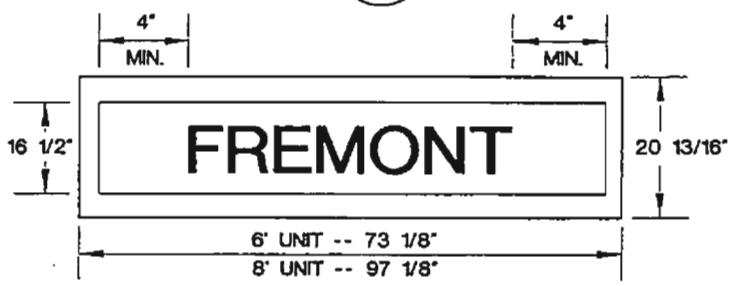
**NOTES:**

- 1 FOR TYPE XX POLE SPECIFICATIONS SEE DRAWING NO. 404.406.
- 2 STREET NAME SIGN WIRING TO RUN THROUGH TWO (2) SEAL-TITE 90° FITTINGS WITH LIQUID-TIGHT FLEXIBLE CONDUIT. USE A DRIP LOOP SUFFICIENT ENOUGH TO ALLOW SIGN TO SWING FREELY.

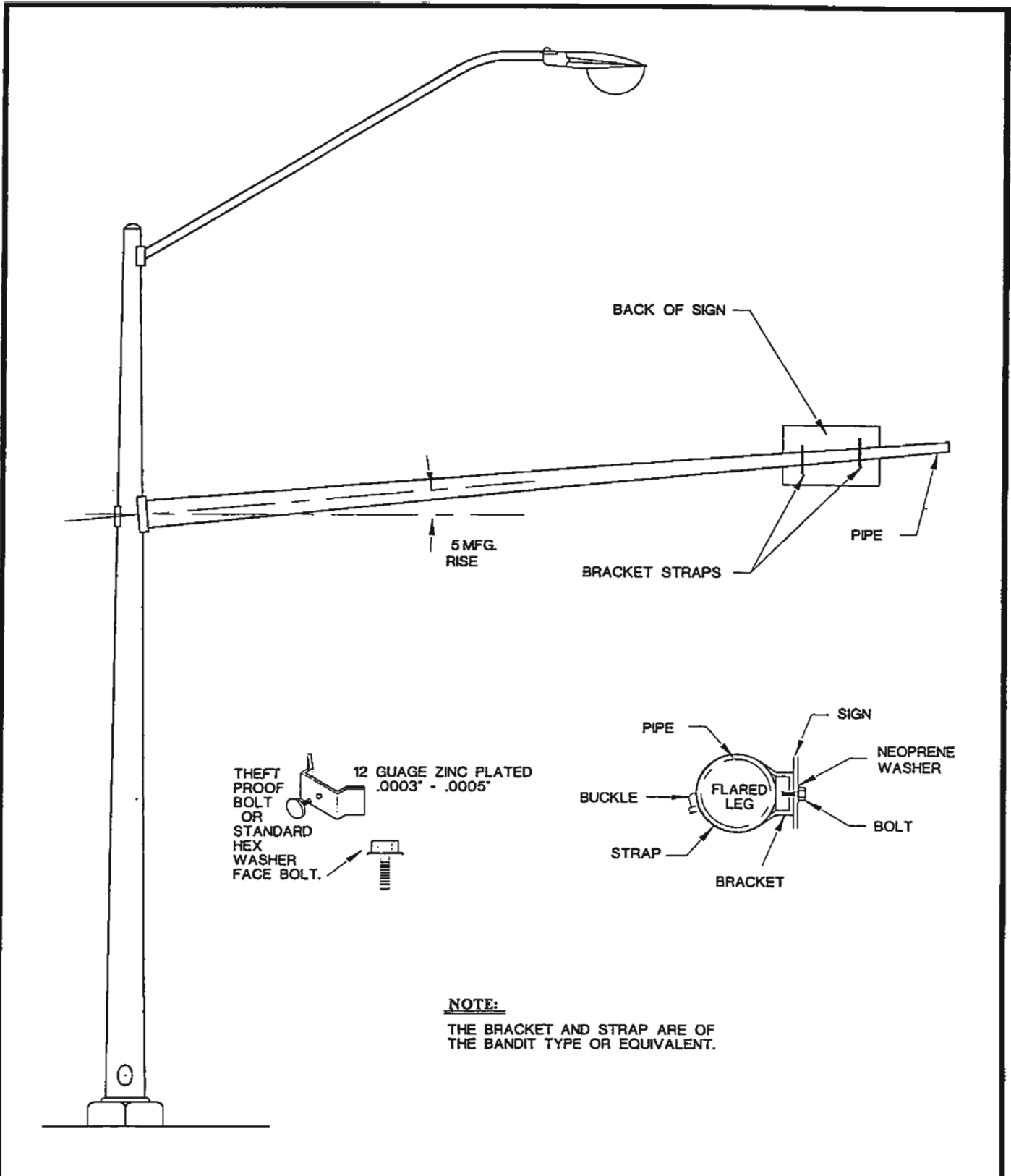
SPECIFICATION REFERENCE	UNIFORM STANDARD DRAWINGS CLARK COUNTY AREA		
	TYPE XX POLE WITH ILLUMINATED STREET NAME SIGN		
	DATE 4-9-98	DWG. NO. 404.416	SHEET 1 OF 1



- NOTES:**
1. SIGN SHALL BE DOUBLE FACED.
  2. SIGN PANEL SHALL BE WHITE WIDE-ANGLE PRISMATIC TRANSLUCENT REFLECTIVE SHEETING, EITHER REVERSE-SCREENED WITH MANUFACTURER'S RECOMMENDED GREEN INK AND CLEAR COATING OR OVERLAYED WITH GREEN ELECTRONIC CUTABLE TRANSPARENT OVERLAY FILM, APPLIED TO A POLYCARBONATE CLEAR SUBSTRATE, 0.060 GAGE.
  3. LETTERS SHALL BE 8" SERIES E AND, UNLESS OTHERWISE SPECIFIED BY THE TRAFFIC ENGINEER, SHALL BE ALL UPPERCASE WITH NO STREET NAME SUFFIX. IF NECESSARY TO MAKE SPACING FIT, REDUCE TO 8" SERIES D. SPACING BETWEEN LETTERS MAY BE INCREASED BY UP TO 25% (MAX) TO ACHIEVE 4" END SPACES.
  4. APPROVAL OF SHOP DRAWING OF SIGNFACE LAYOUT BY TRAFFIC ENGINEER IS REQUIRED PRIOR TO FABRICATION OF SIGN PANELS.
  5. SHEETING SHALL BE APPLIED IN A VERTICAL ORIENTATION IN ACCORDANCE WITH MANUFACTURER'S RECOMMENDATION.

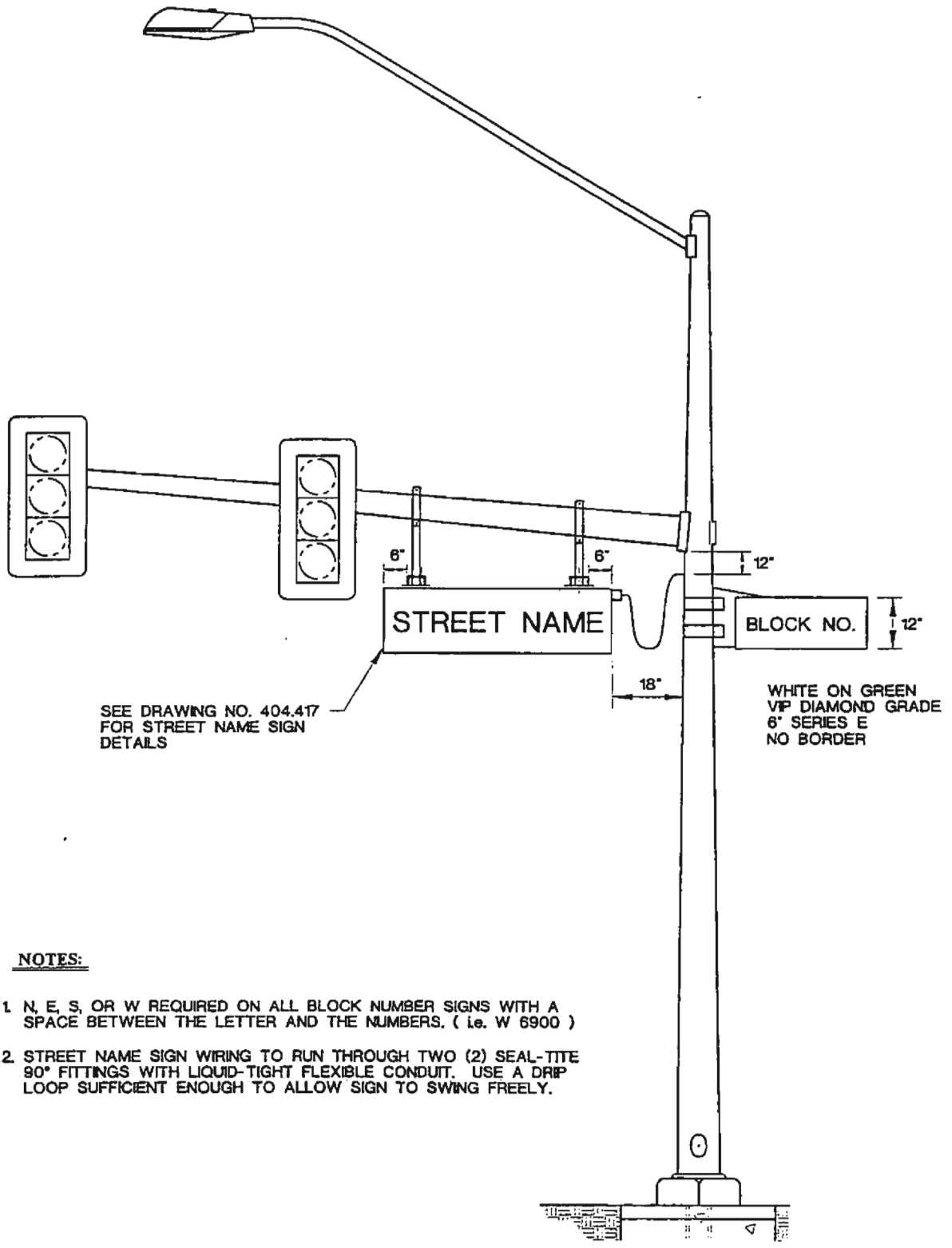


SPECIFICATION REFERENCE	UNIFORM STANDARD DRAWINGS CLARK COUNTY AREA		
	STREET NAME SIGN INTERNALLY ILLUMINATED		
	DATE 1-14-99	DWG. NO. 404.417	SHEET 1 OF 1



**NOTE:**  
 THE BRACKET AND STRAP ARE OF THE BANDIT TYPE OR EQUIVALENT.

SPECIFICATION REFERENCE		UNIFORM STANDARD DRAWINGS CLARK COUNTY AREA	
		SIGN MOUNTING ILLUSTRATION	
		DATE 4-9-98	DWG. NO. 404.418
		SHEET 1 OF 1	



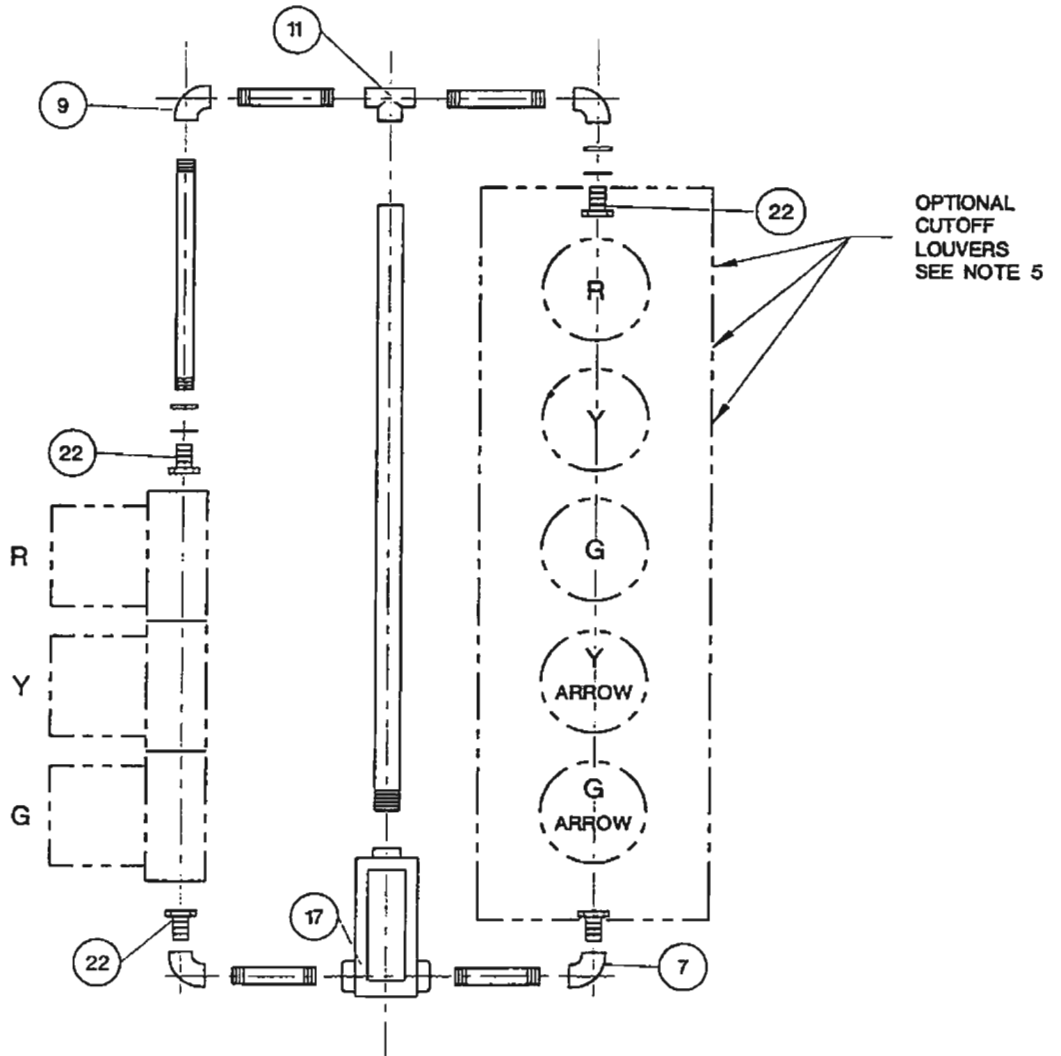
SEE DRAWING NO. 404.417  
FOR STREET NAME SIGN  
DETAILS

WHITE ON GREEN  
VP DIAMOND GRADE  
6" SERIES E  
NO BORDER

**NOTES:**

1. N, E, S, OR W REQUIRED ON ALL BLOCK NUMBER SIGNS WITH A SPACE BETWEEN THE LETTER AND THE NUMBERS. ( i.e. W 6900 )
2. STREET NAME SIGN WIRING TO RUN THROUGH TWO (2) SEAL-TITE 90° FITTINGS WITH LIQUID-TIGHT FLEXIBLE CONDUIT. USE A DRIP LOOP SUFFICIENT ENOUGH TO ALLOW SIGN TO SWING FREELY.

SPECIFICATION REFERENCE	UNIFORM STANDARD DRAWINGS CLARK COUNTY AREA		
	BLOCK NUMBER SIGN		
	DATE 4-9-98	DWG. NO. 404.420	SHEET 1 OF 1

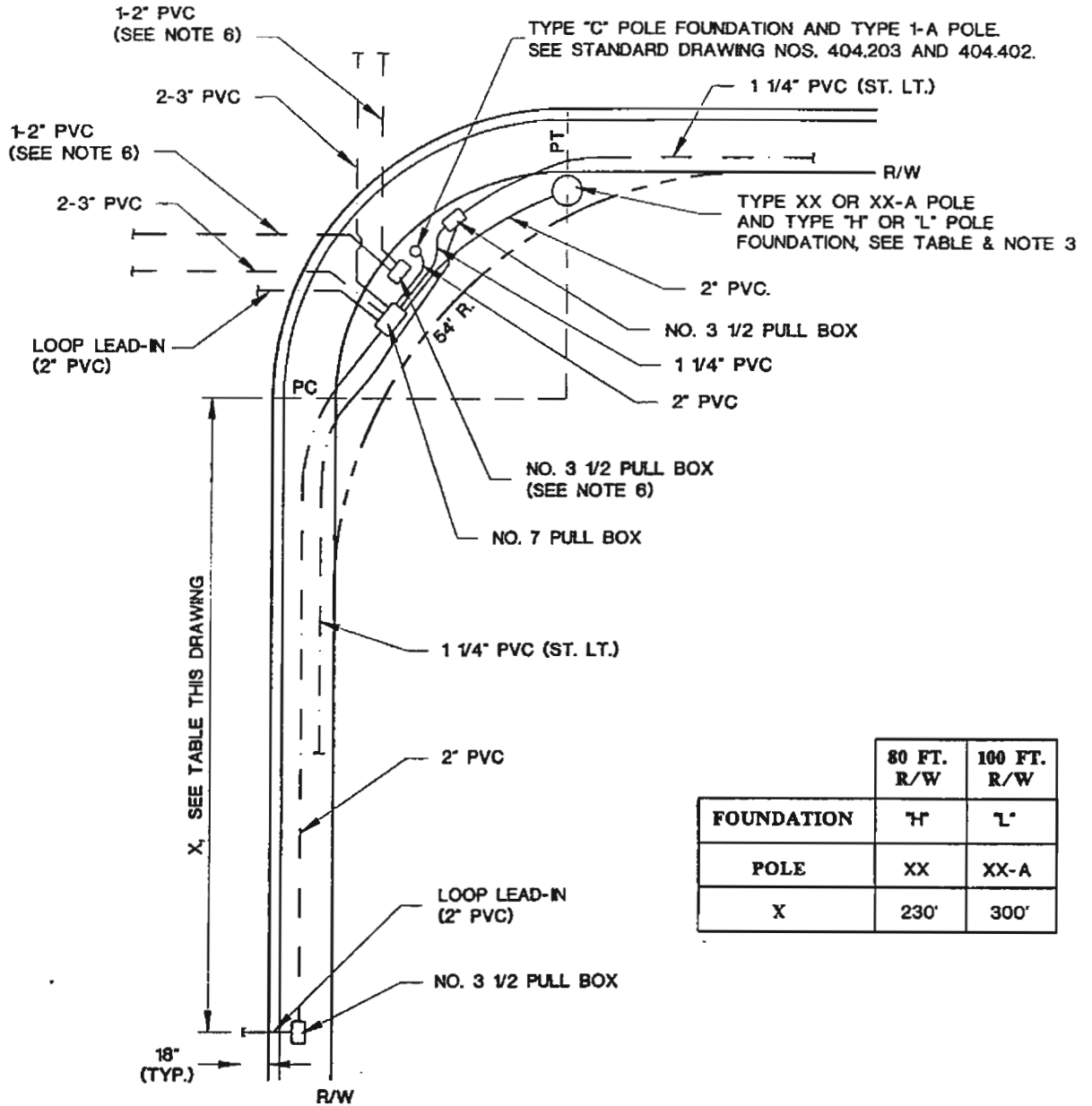


**B-14T**

**NOTES:**

1. FOR ITEMIZED PARTS SEE DRAWING NO. 404.1005.
2. FOR ARROW LENS SEE DRAWING NO. 404.1410.
3. SEE PLANS FOR BACKPLATE REQUIREMENTS.
4. ALL SIGNALS ARE 12" NOMINAL (GLASS).
5. OPTIONAL 3 CUTOFF LOUVERS ON RED, YELLOW AND GREEN BALL INDICATIONS ON 5-SECTION HEADS MAY BE PROVIDED AS DIRECTED BY THE TRAFFIC ENGINEER.

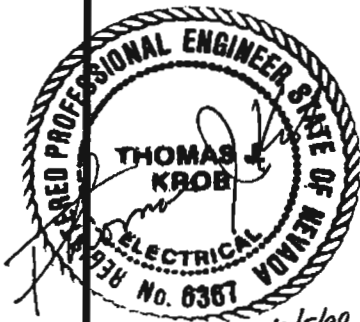
SPECIFICATION REFERENCE	UNIFORM STANDARD DRAWINGS CLARK COUNTY AREA		
	SIGNAL ASSEMBLIES B-14T		
	DATE 10-8-98	DWG. NO. 404.1029	SHEET 1 OF 1



	80 FT. R/W	100 FT. R/W
FOUNDATION	"H"	"L"
POLE	XX	XX-A
X	230'	300'

**NOTES:**

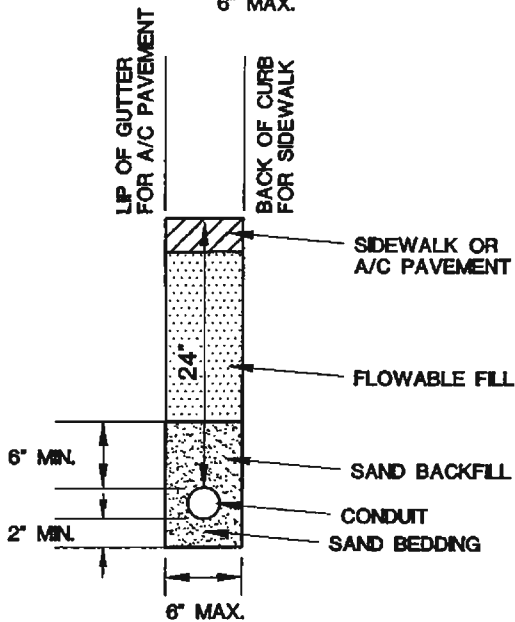
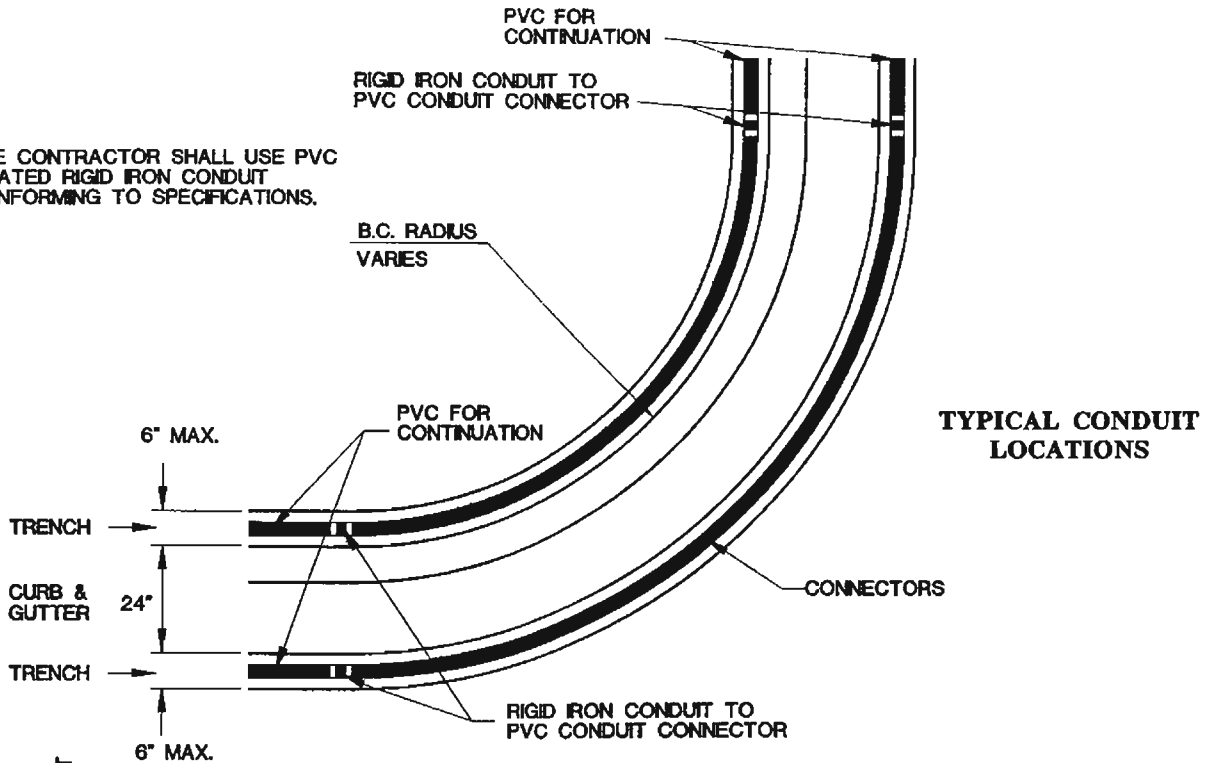
1. ALL TRAFFIC SIGNAL POLES SHALL BE GALVANIZED BY MANUFACTURER OR PRIME PAINTED BY MANUFACTURER AND FINISH PAINTED BY CONTRACTOR PER SPECIFICATIONS AND AS REQUIRED BY THE ENTITY.
2. IF STREETLIGHTING CIRCUIT DOES NOT EXIST, DELETE NO. 3 1/2 PULL BOX AT INTERSECTION AND 1 1/4" PVC.
3. FOR TYPE XX AND XX-A POLES, SEE STANDARD DRAWING NO. 406; FOR TYPE "H" AND "L" FOUNDATIONS, SEE STANDARD DRAWING NOS. 404.208 AND 404.209.
4. EXTEND THE 1-2" AND THE 2-3" PVC 5 FEET PAST EDGE OF PAVEMENT TO SINGLE NO. 3 1/2 PULL BOX OR CONNECT TO THE EXISTING TRAFFIC SIGNAL CONDUIT.
5. INTERCONNECT IS DEDICATED 2" CONDUIT WITH A NO. 5 PULL BOX EVERY 500 FEET(MAX).
6. ADDITIONAL CONDUIT AND LARGER PULL BOX MAY BE REQUIRED AS DETERMINED BY THE ENGINEER.



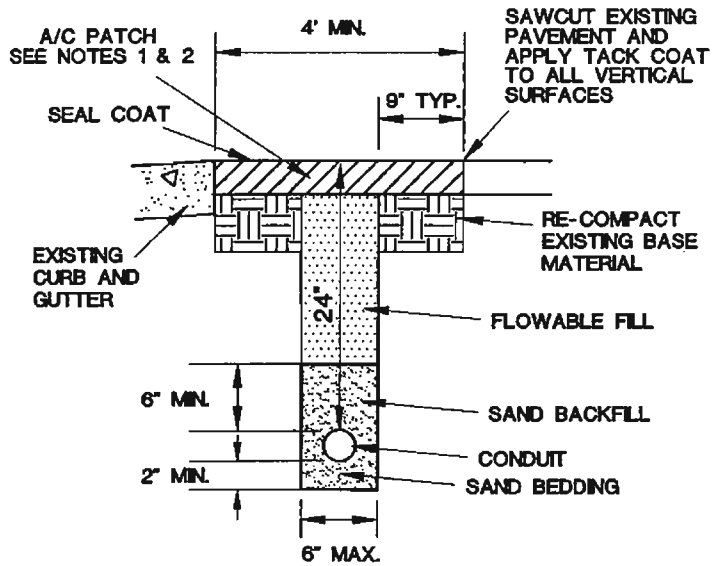
10/5/99

SPECIFICATION REFERENCE		UNIFORM STANDARD DRAWINGS CLARK COUNTY AREA	
		TYPICAL TRAFFIC SIGNAL CONDUIT LAYOUT WITH STREETLIGHTING	
		DATE 6-11-98	DWG. NO. 404.1306
		SHEET 1 OF 1	

THE CONTRACTOR SHALL USE PVC COATED RIGID IRON CONDUIT CONFORMING TO SPECIFICATIONS.



NEW CONSTRUCTION



CONDUIT RETROFIT (EXIST. PAVEMENT)

NOTES (RETROFIT):

1. DEPTH TO MATCH EXISTING AC PAVEMENT, BUT NOT LESS THAN 4", PLACED IN MULTIPLE LIFTS OF EQUAL THICKNESS.
2. PATCH WIDTH SHALL BE SUFFICIENT TO ACCOMMODATE MECHANICAL PLACEMENT, ROLLING AND COMPACTION PER UNIFORM STANDARD SPECIFICATION SECTION 401.03.11.
3. IF SAWCUT IS WITHIN 3 FEET OF EDGE OF EXISTING ASPHALT CONCRETE SURFACE OR OTHER PATCH, REMOVE EXISTING PAVEMENT TO THAT EDGE AND REPLACE ENTIRE SECTION.
4. IF 24" COVER IS NOT POSSIBLE, THEN RED CONCRETE ENCASEMENT MIN. 4" ABOVE CONDUIT REQUIRED.
5. FLOWABLE FILL MAY BE INSTALLED TO FINAL GRADE FOR TEMPORARY PATCHING.
6. PERMANENT PATCH MIX DESIGN SHALL BE AS REQUIRED BY ENGINEER.

SPECIFICATION REFERENCE	UNIFORM STANDARD DRAWINGS CLARK COUNTY AREA		
	INSTALLATION OF CONDUIT		
	DATE 5-13-99	DWG. NO. 404.1419	SHEET 1 OF 1