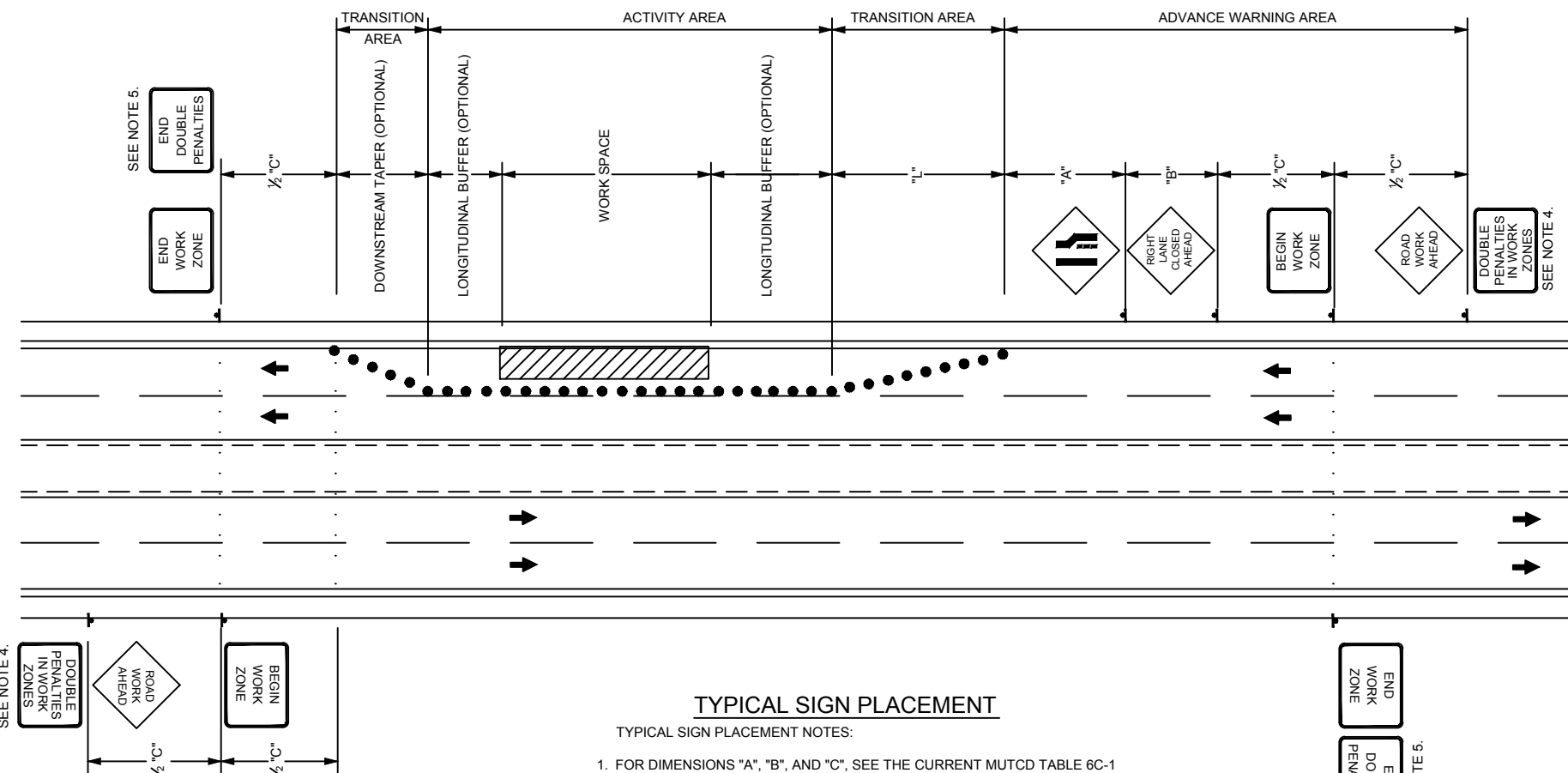


GENERAL NOTES:

1. RETRO-REFLECTIVE SIGN SHEETING SHALL CONFORM TO SECTION 716, LATEST REVISION, OF THE UNIFORM STANDARD SPECIFICATIONS.
2. SIGN LEGENDS AND BORDERS SHALL COMPLY WITH THE REQUIREMENTS OF THE MANUAL ON UNIFORM TRAFFIC CONTROL DEVICES (MUTCD), LATEST EDITION.
3. SIGNS SHALL BE MOUNTED IN CONFORMANCE WITH PART 6, MUTCD, LATEST EDITION.
4. THE "DOUBLE PENALTIES IN WORK ZONES" SIGN SHOULD BE MOUNTED WITH THE FIRST SIGN IN THE ADVANCE WARNING SIGN SERIES, TYPICALLY THE "ROAD WORK AHEAD" SIGN.
5. "END WORK ZONE" SIGN SHALL BE MOUNTED AT THE END OF THE WORK ZONE WITH THE "END DOUBLE PENALTIES" SIGN, IF APPLICABLE, ON THE SAME DEVICE OR POST.
6. THE DESIGNATION OF WORK ZONE, INCLUDING MARKING OF THE DOUBLE PENALTIES, SHALL NOT BE REQUIRED ON STREETS POSTED AT 25 MILES PER HOUR OR LESS AND ARE THE ACCESS TO OR APPURTENANT TO A RESIDENTIAL AREA.



TYPICAL SIGN AND LETTERING SIZE TABLE

SPEED LIMIT	"DOUBLE PENALTIES IN WORK ZONE" SIGN			"BEGIN WORK ZONE" SIGN "END WORK ZONE" SIGN "END DOUBLE PENALTIES" SIGN		
	"H" (IN.)	"W" (IN.)	LETTERING	"H" (IN.)	"W" (IN.)	LETTERING
LESS THAN 45 MPH	24	24	4 INCH SERIES "C"	18	24	4 INCH SERIES "D"
45 MPH OR GREATER OR IF MULTI-LANE	36	36	6 INCH SERIES "C"	30	36	6 INCH SERIES "D"

SEE THE CURRENT EDITION OF THE "STANDARD HIGHWAY SIGNS" MANUAL FOR SERIES "C" AND SERIES "D" LETTERING DIMENSIONS.

TYPICAL SIGN PLACEMENT

TYPICAL SIGN PLACEMENT NOTES:

1. FOR DIMENSIONS "A", "B", AND "C", SEE THE CURRENT MUTCD TABLE 6C-1 "Recommended Advance Warning Sign Minimum Spacing."
2. FOR DIMENSION "L", SEE THE CURRENT MUTCD TABLE 6C-3 & 6C-4.
3. SIGNS MAY BE OMITTED IN THE DIRECTION WORK IS NOT BEING CONDUCTED IF THE ROADWAY IS PHYSICALLY SEPARATED BY A RAISED MEDIAN OR BARRIER WALL THROUGH THE COMPLETE WORK ZONE.

Effective 7/1/12

TRAFFIC CONTROL PLAN FOR HIGHWAY WORK ZONE	SPECIFICATION REFERENCE		TYPICAL APPLICATION FOR STANDARD FOR "DOUBLE PENALTIES" SIGNS FOR USE IN TEMPORARY TRAFFIC CONTROL ZONES	AGENCY APPROVED	B	C	H	L	M	N
	716	SIGN MATERIALS		UNIFORM STANDARD DRAWINGS CLARK COUNTY AREA						
	SUPPLEMENTAL DRAWING									
				DATE: 07-01-12	DWG NO. 627					