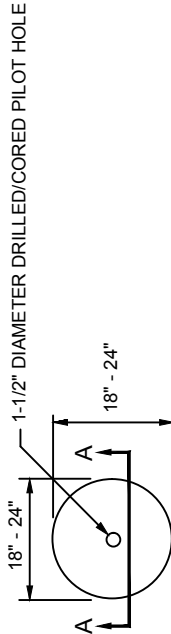


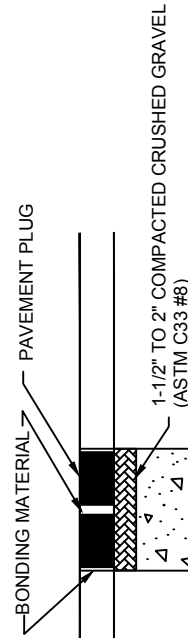
**TYPE B - KEYHOLE REPAIR
REQUIRED FOR ROW WIDTH GREATER THAN 60'
OPTIONAL FOR ROW WIDTH 60' OR LESS**

NOTES:

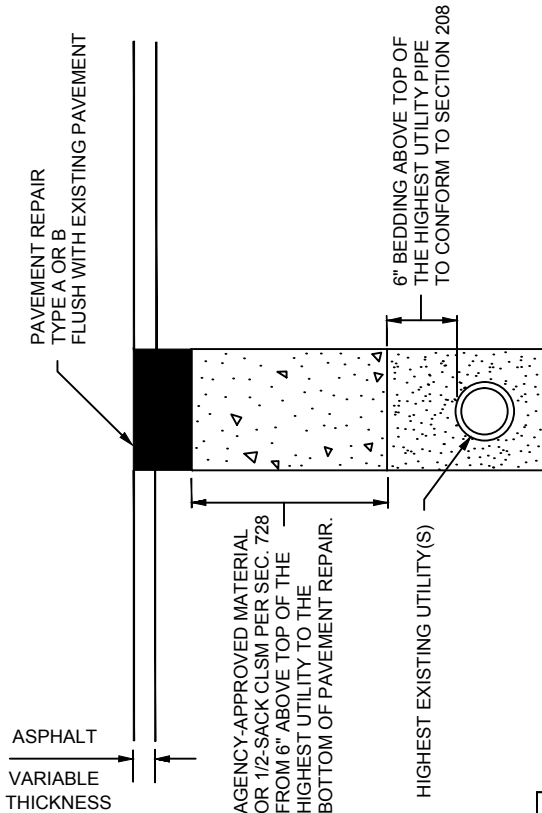
1. CUT AND REMOVE PAVEMENT PLUG WITH AN APPROVED KEYHOLE CORING DEVICE. PAVEMENT TO BE CORED SHALL CONTAIN NO CRACKS AND SHALL BE AT LEAST 4" THICK. IF PLUG IS DAMAGED OR IS LESS THAN 4" THICK, REPLACE PLUG WITH A "FARMED" ASPHALT PLUG FROM AN APPROVED SITE. FARMED PLUGS SHALL BE AT LEAST 4" THICK AND AT LEAST ONE INCH THICKER THAN EXISTING ASPHALT.
2. **BONDING MATERIAL** SHALL BE A SINGLE COMPONENT CEMENTITIOUS RAPID HARDENING, HIGH STRENGTH, WATERPROOF BONDING AGENT THAT ALLOWS THE CORE (ABLE) TO SUPPORT AT LEAST THREE TIMES AASHTO H-25 LOADING WITHIN 30 MINUTES OF APPLICATION. BOND AGENT MUST SHOW A MINIMUM 20 PSI BOND STRENGTH (ASTM C882) AND A MINIMUM 200 PSI COMPRESSIVE STRENGTH (ASTM C109) IN 30 MINUTES.
3. AGENCY-APPROVED BACKFILL BELOW REPAIR SHALL BE PER SECTION 215.
4. FILL KEYHOLE WITH BONDING MATERIAL DURING REPAIR.
5. PRIOR AGENCY APPROVAL IS REQUIRED FOR MULTIPLE KEYHOLE REPAIRS WITHIN A GIVEN ROADWAY SEGMENT.
6. A 5 YEAR WARRANTY IS REQUIRED ON ALL REPAIRS.



POTHOLE PLAN VIEW
(NOMINAL DIMENSIONS)

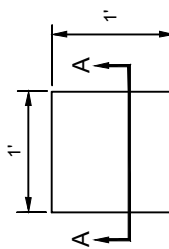


POTHOLE PROFILE



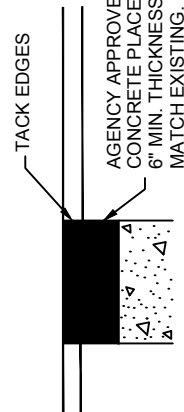
SECTION A-A

**TYPE A - CUT & PATCH REPAIR
OPTIONAL FOR ROW WIDTH 60' OR LESS**



NOTE: EDGES SHALL BE CUT TO A NEAT VERTICAL FACE.

POTHOLE PLAN VIEW
(NOMINAL DIMENSIONS)



POTHOLE PROFILE

SPECIFICATION REFERENCE		AGENCY APPROVED					
215	KEYHOLE POTHOLE EXCAVATION AND BACKFILL	B	C	H	L	M	N
		UNIFORM STANDARD DRAWINGS CLARK COUNTY AREA					
		UTILITY POTHOLE REPAIR					
DATE 12-09-10		DWG. NO.		506			